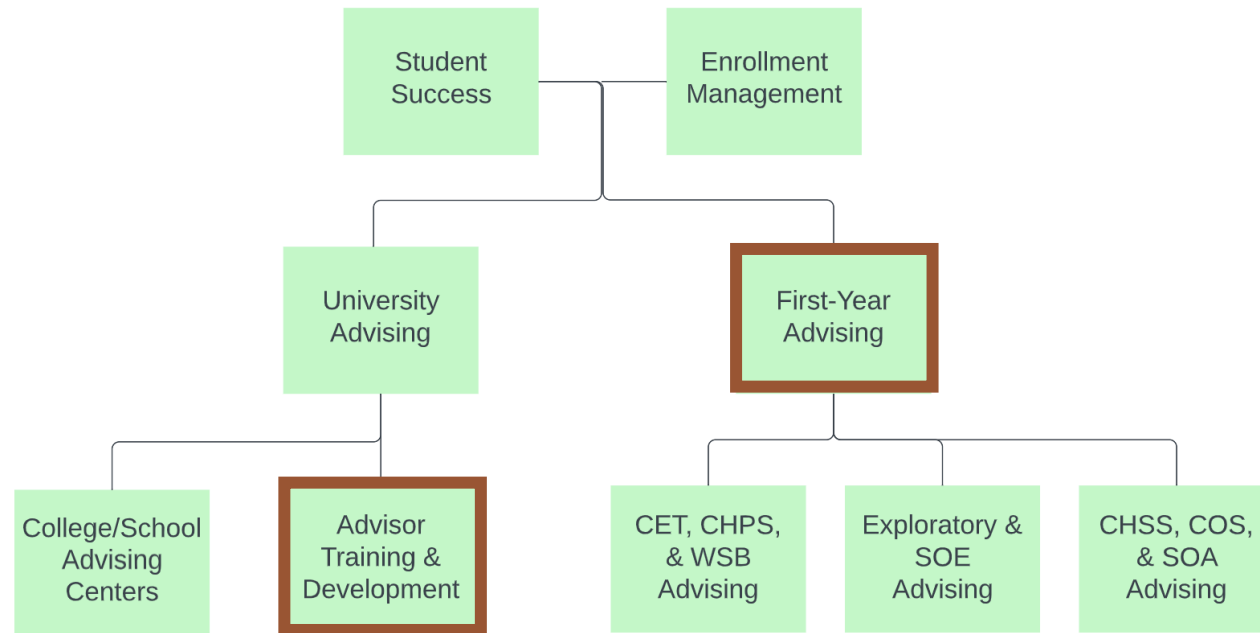


# First-Year Advising

General Education, Fall 2022



# Advising Organization



# New Advisor Training

## All New Advisors

- 15 module Canvas course
- 5 workshops
- Observations

Does not include  
general education

## First-Year Counselors

### 12 workshops

- Observation
- Reverse observation
- Mentoring

Three workshops on  
general education

# First-Year GE Training

## Math/English Workshops

- Benefits of the courses/tie to completion
- Growth mindset values
- Course placement processes
- Course pathways
- Major requirements
- Transfer credit

## General GE Workshop

- Benefits of the curriculum & exploration
- R470-3 outcomes
  - ➔ Intellectual & practical skills
    - Human culture, natural, physical world
  - ➔ Personal & social responsibility
    - Integrative learning
- Major requirements

# Continuous Training

## University Advising

- Math curriculum changes

## First-Year Advising

- Math curriculum changes
- GE course guest speakers

# Challenges for GE in advising

- Completing GE in concurrent enrollment
- Pre-existing mindset
- Available time in an appointment
- Prior/current GE experience
- Rigidity in GE requirements

# Rigidity in GE requirements

- Every college/school has majors with restricted GE courses in the distribution areas

College/School	Major	Distribution/Course
CET	Aerospace Technology Computer Science	SS - PSY 1010, PP - PHYS 1850, TS - TECH 1010/METO 1010 HH - COMM 1020, SS - COMM 2110, PP - PHYS 2210
COS	Biology Exercise Science	BB - BIOL 1610, PP - CHEM 1210, TS - CHEM 1220 BB - BIOL 1010, TS- ZOOL 1090
CHPS	Criminal Justice	SS - PSY 1010/SOC 1010
CHSS	Anthropology	SS - ANTH 101G, TS - ANTH 1020
SOA	Art & Design	FF - ARTH 2710
SOE	Elementary Education	FF - 2100 course, SS - PSY 1100
WSB	Accounting	SS- ECON 2010





# Rigidity in GE requirements

College/School	Major	Distribution/Course
CET	Aerospace Technology Computer Science	SS - PSY 1010, PP - PHYS 1850, TS - TECH 1010/METO 1010 HH - COMM 1020, SS - COMM 2110, PP - PHYS 2210
COS	Biology Exercise Science	BB - BIOL 1610, PP - CHEM 1210, TS - CHEM 1220 BB - BIOL 1010, TS- ZOOL 1090
CHPS	Criminal Justice	SS - PSY 1010/SOC 1010
CHSS	Anthropology	SS - ANTH 101G, TS - ANTH 1020
SOA	Art & Design	FF - ARTH 2710
SOE	Elementary Education	FF - 2100 course, SS - PSY 1100
WSB	Accounting	SS- ECON 2010