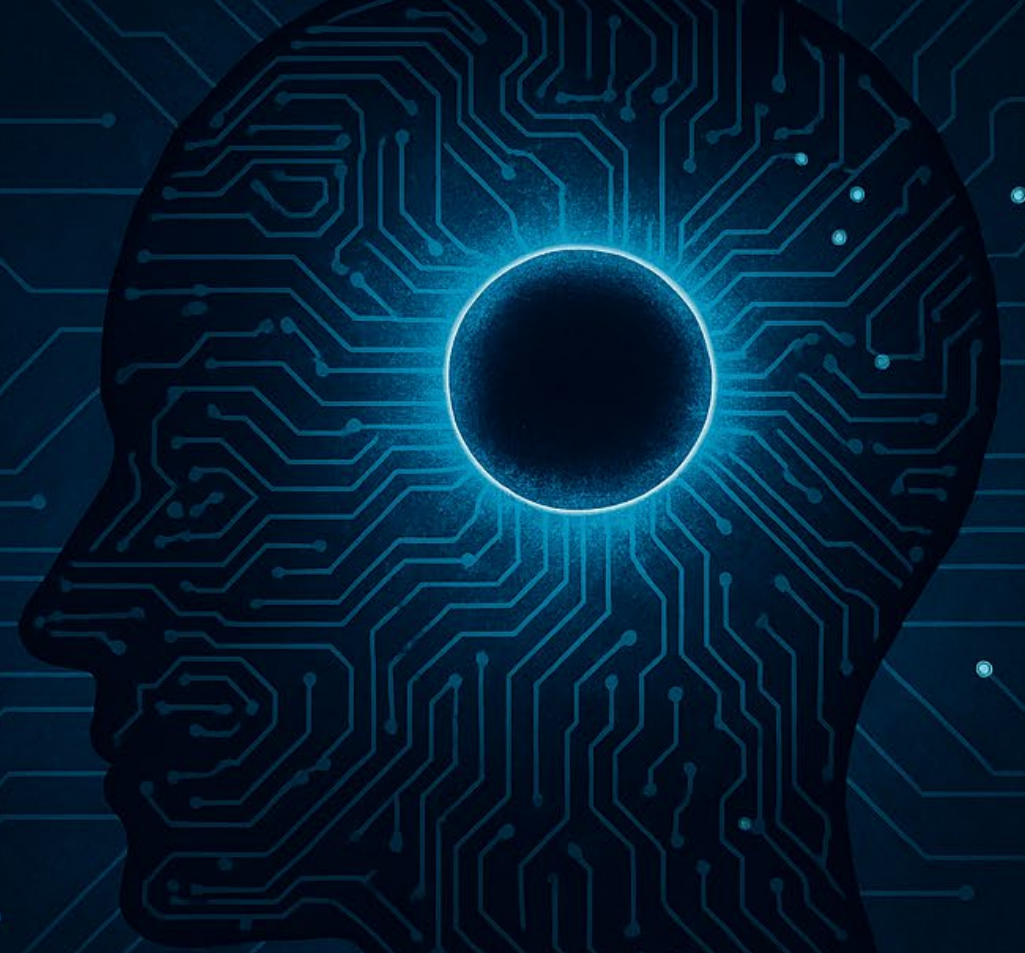


BUILDING AN APPLIED AI INSTITUTE

FROM THE GROUND UP

UVU UTAH VALLEY
UNIVERSITY



Our Journey

Foundations & Alignment



Start with the Why

Foundational First Steps (What Needs to Happen First)

People & Balance



Balancing the Three Pillars

Handling Faculty Resistance

Adaptability & Trust



Training in a Fast-Moving Tool Landscape

Privacy & Innovation Balance

Evaluating AI Applications & Agents



FOUNDATIONS & ALIGNMENT



Start with the Why

- **Stress the opportunity:** workforce demand, student expectations, and institutional relevance.
- **Position the University:** forward-looking and pragmatic.



Foundational First Steps (What Needs to Happen First)

- **Leadership & Buy-In:** Establish a steering committee to align strategy across academic, IT, and industry stakeholders.
- **Vision & Mission:** Keep it simple: applied learning, workforce alignment, and responsible AI.
- **Infrastructure:** Secure compute resources, cloud partnerships, and governance frameworks early — tech is the foundation.



PEOPLE & BALANCE



Balancing the Three Pillars

- **Academics:** Build applied curriculum and interdisciplinary courses.
- **Faculty:** Offer opt-in workshops, professional development, and low-barrier pathways into AI.
- **Staff:** Focus on practical AI tools (data analysis, productivity apps) that reduce friction in their daily work.



Handling Faculty Resistance

- **Acknowledge skepticism:** “AI won’t replace good teaching — it will augment it.”
- **Provide evidence:** student projects, improved research workflows, early faculty champions.
- **Safe experimentation spaces:** pilot programs, sandbox tools.



ADAPTABILITY & TRUST



Training in a Fast-Moving Tool Landscape

- **Focus on principles:** not just tools: prompt design, ethical use, evaluation of outputs.
- **Use a “train-the-trainer” model:** identify champions in each department.
- **Offer micro-trainings:** (1-hour sessions) rather than semester-long programs.



Privacy & Innovation Balance

- **Establish guardrails:** approved tools, data use policies, clear faculty/student guidelines.
- **Collaborate:** with IT security and legal teams from the beginning.
- **Innovate within guardrails:** pilot with anonymized datasets, partnerships that respect FERPA/GDPR.



Evaluating AI Applications & Agents

- **Review rubric:** accuracy, transparency, privacy compliance, pedagogical value.
- **Pilot tests:** before broad adoption.
- **Strategic involvement:** faculty + IT + students in evaluation committees.

3 KEY TAKEAWAYS

If you only remember three things from this talk, make it these:

1. **Start with governance and infrastructure** — you can't scale innovation without it.
2. **Balance innovation and trust** — faculty buy-in, staff training, and privacy guardrails are as important as the tech.
3. **Train for adaptability** — the tools will change, but the mindset and principles are what endure.