

WHERE LOVE AND LEARNING COME TOGETHER

2024-2025

SCHOOL PROFILE



Address:
Seoul Street, 2nd Khoroo,
Sukhbaatar District, 14251,
Ulaanbaatar, Mongolia

Tel:
(+976) 7010 5010

e-Mail:
info@elite.edu.mn
admissions@elite.edu.mn

Website:
www.elite.edu.mn

CEEB CODE:
676190

Director
Ganbat Batbuyan
ganbat.batbuyan@elite.edu.mn

Secondary Principal
Otgonchimeg Alagaa
otgonchimeg.alagaa@elite.edu.mn

College Counselor:
Javzandulam Khorolsuren
javzandulam.khorolsuren@elite.edu.mn

OVERVIEW

This non-profit, co-educational day school offers an international curriculum under the Cambridge Assessment International Education system and National Core Curriculum, and is authorized to teach all the Cambridge Primary, Lower Secondary, Upper Secondary (IGCSE) and AS & A level which strives to connect to the world, and offers a personalized education experience that empowers students to discover their passion. UEIS has a campus covering over 3900 sqm; the 4000sqm Main Campus for Grades 1 to 12, 500sqm the Kindergarten. Both purpose-built sites are supported by an innovative curriculum, which uses an inquiry-based and skills-focused approach to learning.

The school's program is designed to foster a lifelong passion of learning in students who will grow up to be independent, reflective, creative, responsible, honest people who act for the good of all. The program is implemented by the experienced faculty, consisting of teachers from 13 different countries. The graduates of the school have been accepted into nearly 100 universities in more than 20 countries. UEIS is licensed to offer a rigorous and respected international curriculum to both foreign and Mongolian students.

STUDENT BODY & FACULTY

Total students 826

Male 49% (404) Female 51% (344)

97% Local students
3% International students
10 Countries represented by
25 International students

Enrollment

Class of 2022 41
Class of 2023 45
Class of 2024 46
Class of 2025 44

Total employee 81



FOUNDED IN
2005

826
STUDENTS
enrolled in
2024-2025

11:1 STUDENT
to
TEACHER
ratio

MEDIUM OF
INSTRUCTION

ENGLISH

age of students
4-18

LANGUAGES
taught

GERMAN
FRENCH
CHINESE
RUSSIAN
KOREAN
JAPANESE

CLASS SIZE
23
on average

SCHOOL
hours

8 AM
TO
3:30 PM

EXPATRIATE
TEACHERS
31
MONGOLIAN
TEACHERS
33

ACCREDITATIONS & AFFILIATIONS

Cambridge Assessment
International Education
Cambridge International School

COBIS **ec** **IS**

CURRICULUM & GRADUATION REQUIREMENTS

SCHOOL CALENDAR

School year includes:

Two semesters and total 3 terms comprised of approximately 35 weeks

Eight 40-minute periods daily/classes

6th grade students must take 14 courses/term

7-8th grade students must take 16 courses/term

9-10th grade students must take 19 courses/term

11th grade students must take 14 courses/term

12th grade students must take 10 courses/term

REQUIRED COURSES

Social Studies class: English, Maths, Business Studies, Global Perspectives, Travel & Tourism, World History, PE, Mongolian Language, Mongolian Literature, Mongolian Script, Mongolian Geography, Mongolian History, Mongolian Sociology

Science class: English, Maths, Biology & Chemistry, ICT & Physics, World History, PE, Mongolian Language, Mongolian Literature, Mongolian Script, Mongolian

GRADING SYSTEM

A+ 97-100	A 93-96	A- 90-92
B+ 87-89	B 83-86	B- 80-82
C+ 77-79	C 73-76	C- 70-72
D+ 63-69	D 57-62	D- 50-56
F 49 & below		

*UEIS uses A to F grading system as indicated above
A/AS Levels are unweighted for the calculation of the cumulative GPA. Any mark below F is considered failing.

AFTER SCHOOL ACTIVITIES

Exam prep classes, Debate, Technology & Electronics, Programming, Robotics, Invention & Clothes Designing, Fine Art, Music & instrument classes, Drama & Acting, Essay Writing & Declamation, Basketball, Volleyball, Football, Tennis, Graphic design club, Fashion design club

UNIVERSITY ACCEPTANCE LIST

*A partial list of UEIS students accepted to universities abroad

2021-2022

Boise State University	US	HSLU	CH
Chatham University	US	Hamilton College	US
Duquesne University	US	Drexel University	US
Geneseo University x2	US	University of Bristol	UK
University of Tampa	US	Butler University	US
Iowa State University	US	University of Idaho	US
University of Jaen x3	SP	University of Iowa	US
Renssellaer University x2	US	University of Kansas	US
University of Delaware	US	UW Bothell	US
University of Toronto	CA	Vassar College	US
Maastricht University	NL	Pace University	US
University of Buffalo	US	Webster University	US
University of Arizona	US	Whitworth University	US
University of Melbourne	AU	Hult x2	US
Minnesota University	US	Dartmouth College	US
New College of Florida	US	CityU x2	HK
North Central College	US	FIC	SG
Wageningen University	NL	Rollins College	US
Ohio State University	US	Seattle University	US
University of Alberta	CA	Simon Fraser	CA
Queen Mary University	UK	SUNY-College x2	US
St.Lawrence University	US	NYU Shanghai	CN
Augustana College	US	Illinois College	US
College of New Jersey	US	Dublin College	IR
HAN univ : Life sciences	NL	Lycoming College	US
Florida Southern College	US	Miami University	US
University of Manchester	UK	Albion College	US
York College Pennsylvania	US	UniCamillus x2	IT
Arizona State University x2	US		US
Tokyo International University	JP		JP
Washington State University x2	US		US
University of Illinois Chicago x2	US		US
Ramapo College of New Jersey	US		US
Corvinus University of Budapest	HU		HU
University of Maryland - Baltimore	SP		SP
University of Minnesota Twin cities	US		US
University of Washington Bothel x2	US		US
The University of British Columbia x2	CA		CA
University of Washington Seattle x2	NL		NL

RESPECT
RESPONSIBILITY
HONESTY

**ULAANBAATAR ELITE
INTERNATIONAL SCHOOL
CEEB CODE: 676190**

Address: Seoul Street, 2nd Khoroo,
Sukhbaatar District,
Ulaanbaatar, MONGOLIA

Tel: (+976) 7010 5010

**College
Counselor:** Javzandulam Khorolsuren

e-Mail: info@elite.edu.mn

Website: www.elite.edu.mn

**ULAANBAATAR
EMPATHY SCHOOL
CEEB CODE: 676012**

Address: Amgalan street, 8th khoroo
Bayanzurkh district 13260,
Ulaanbaatar, MONGOLIA

Tel: (+976) 1146 2610

**College
Counselor:** Vosi Karimchonzoda
Bilguun Erdenedalai

e-Mail: info.ub@empathy.edu.mn

**DARKHAN
EMPATHY SCHOOL
CEEB CODE: 676016**

Address: 21st district, Urguu bag,
Darkhan sum, Darkhan-Uul
province, MONGOLIA

Tel: (+976) 7037 5757

**College
Counselor:** Shyngys Ospan
Venera Kali

e-Mail: info.darkhan@empathy.edu.mn

**ORKHON
EMPATHY SCHOOL
CEEB CODE: 676015**

Address: Otgonbileg's street,
Bayan-Undur soum,
Orkhon Province, MONGOLIA

**College
Counselor:** Ulugbek Yuldashov

Tel: (+976) 7035 2792

e-Mail: info.orkhon@empathy.edu.mn

Website: www.empathy.edu.mn

**BAYAN-ULGII
EMPATHY SCHOOL
CEEB CODE: 676018**

Address: 13th District, Ulgii, 83139
Bayan-Ulgii province,
MONGOLIA

Tel: (+976) 7042 2608

**College
Counselor:** Akhjol Taukye

e-Mail: info.bu@empathy.edu.mn

Website: www.empathy.edu.mn

UNIVERSITY ACCEPTANCE LIST 2021-2024

Our schools employ full-time, professional college counselors and intermediary teachers who provide students personalized guidance to help them understand articulate their own interests, needs, and aspirations to choose post-secondary experiences inline with their strength and achievements.

Over 5400 students have graduated from our schools. Nearly 100 percent of them pursue tertiary education in nationally and internationally acclaimed universities and colleges around the world. About 250 of our graduates receive scholarships annually to pursue tertiary education with the support of our college counselors, ESAP (Empathy Study Abroad Program) and Empathy Schools' Graduates Association.

NORTH AMERICA

American Collegiate, Los Angeles, USA
Arizona State University, USA
Auburn University, USA
Baylor University, USA
Bellevue College, USA
Boston University, USA
Bridgeport University, USA
California State University, Los Angeles, USA
Cleveland State University, USA
De Anza College, USA
Depaul University, USA
Edith Cowan University, USA
Embry Riddle University, USA
Florida International University, USA
Louisiana State University, USA
Mississippi State University, USA
Nebraska University, USA
Neumann University, USA
Purdue University, USA
Quinnipiac University, USA
San Jose state university, USA
Santa Monica College, USA
The College of Wooster, USA
The University of Arizona, USA
The University of Mississippi, USA
The University of Utah, USA
University of British Columbia, USA
University of Dayton, USA
University of Denver, USA
University of Illinois at Chicago, USA
University of KANSAS, USA
University of Massachusetts Boston, USA
University of Michigan, USA
University of Mississippi, USA
University of Nevada, Reno, USA
University of Pacific, USA
University of People, USA
University of South Carolina, USA
University of Utah, USA
Utah University, USA
Washington and Jefferson College, USA
Washington State University, USA
Whatcom Community College, USA
Witworth University, USA
Calgary University, CANADA
Concordia University, CANADA
McGill University, CANADA
Ontario College of Art & Design University, CANADA
Ontario Tech University, CANADA
Ryerson University International College, CANADA
Saskatchewan University, CANADA
Simon Fraser University, CANADA
The University of British Columbia, CANADA
Toronto School of Management, CANADA
University of Manitoba, University of Manitoba
University of Toronto, CANADA
York University, CANADA

EUROPE

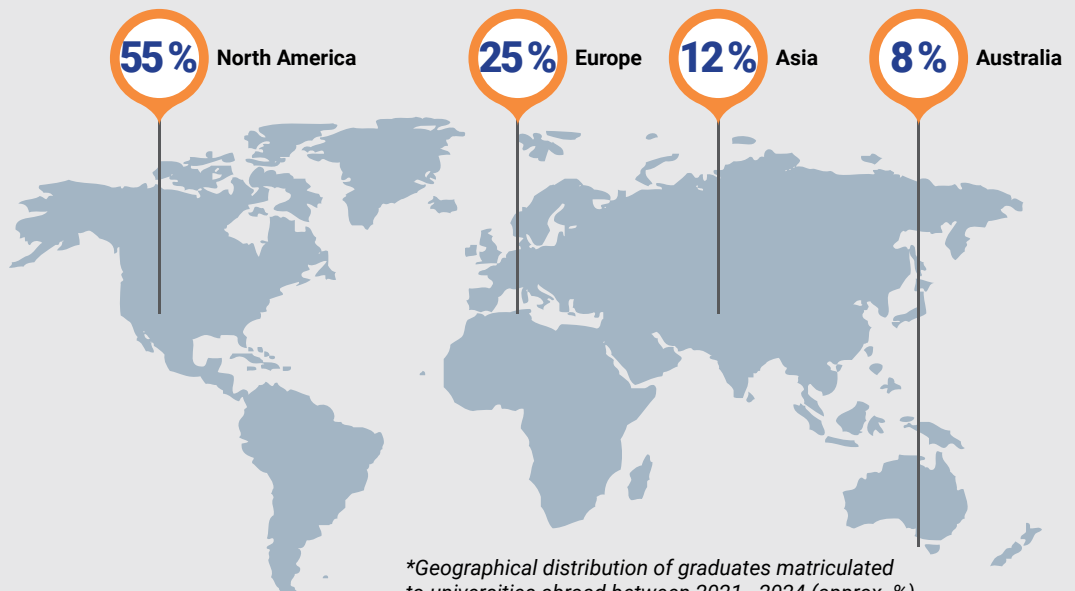
American University in Bulgaria, BULGARIA
Anglia Ruskin University, ENGLAND
Durham University, ENGLAND
France International Graduate Schools, FRANCE
University of Georgia, GEORGIA
Debrecen University, HUNGARY
Griffith College, IRELAND
LLC International University, LITHUANIA
Hanze University of Applied Science, NETHERLANDS
Twente University, NETHERLANDS
University of Groningen, NETHERLANDS
University of Leiden, NETHERLANDS
Van Hall Larenstein University, NETHERLANDS
Wageningen University of Research, NETHERLANDS
University of Business in Wroclaw, POLAND
Vistula University, POLAND
Moscow Polytechnic University, RUSSIA
North-Eastern Federal University, RUSSIA
University of Dundee, SCOTLAND
Lucern University, SWITZERLAND
Durham University, UK
Leeds Art University, UK
Middlesex University, UK
Portsmouth University, UK
Queen Mary University of London, UK
Robert Gordon University, UK
University of Bristol, UK
University of Liverpool, UK
University of Manchester, UK
University of Sheffield, UK
University of West London, UK
University of Westminster, UK
University of Glasgow, UK

AUSTRALIA

University of Sydney, AUSTRALIA
Victoria University of Wellington Foundation, AUSTRALIA
Edith Cowan University, AUSTRALIA
Western Sydney University, AUSTRALIA
Swinburne University, AUSTRALIA
SP Jain School of Global Management, AUSTRALIA
Macquarie University, AUSTRALIA
La Trobe University, AUSTRALIA
University of Melbourne, AUSTRALIA

ASIA

Tsinghua University, CHINA
Lingnan University, HONG KONG
APU, JAPAN
Ritsumeikan Asian Pacific University, JAPAN
Tokyo International University, JAPAN
Waseda University, JAPAN
INHA University, SOUTH KOREA
KAIST, SOUTH KOREA



*Geographical distribution of graduates matriculated to universities abroad between 2021 - 2024 (approx. %).