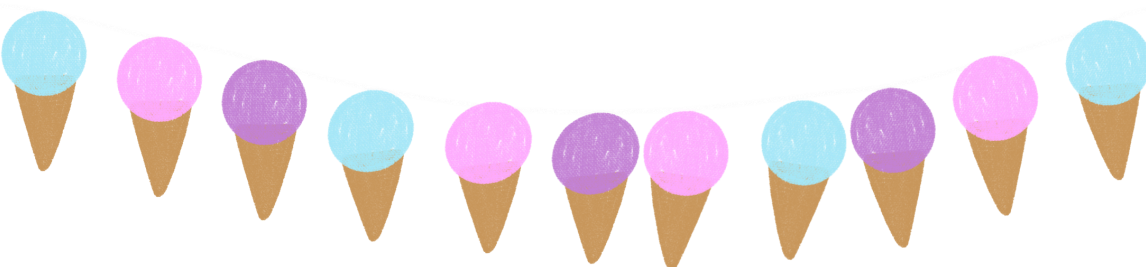


# Vanilla

## Classic

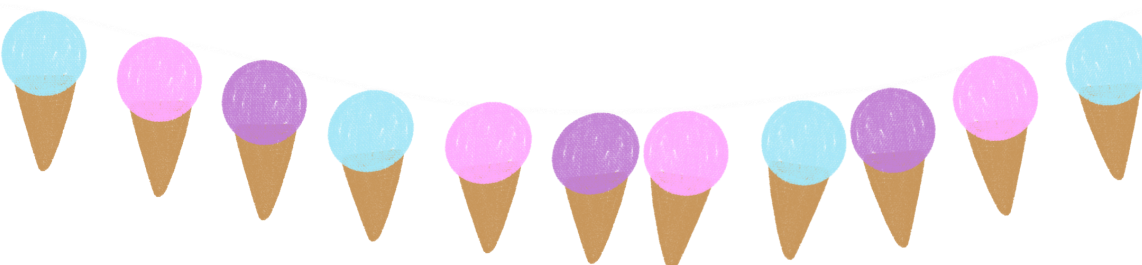
Vanilla is a timeless  
and  
straightforward  
flavor, appealing to  
those who  
appreciate simplicity  
and tradition.



# Chocolate

## Detail- Oriented

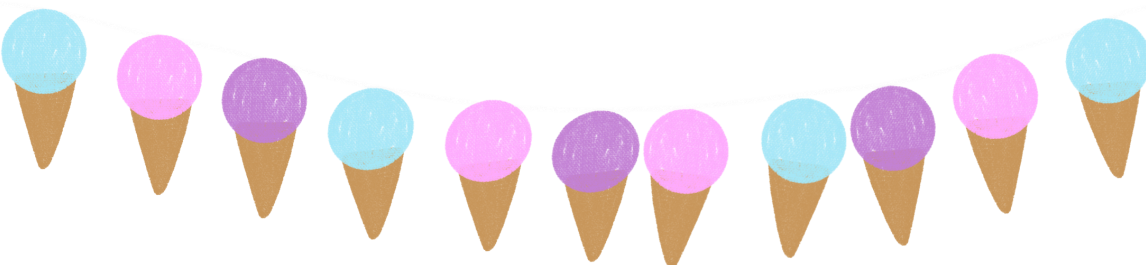
Chocolate lovers often enjoy the intricacies of different cocoa percentages and flavor profiles, making them detail-oriented.



# Strawberry

## Romantic

The sweet and delicate taste of strawberries can evoke romantic feelings, making this flavor a match for those with a romantic aptitude.

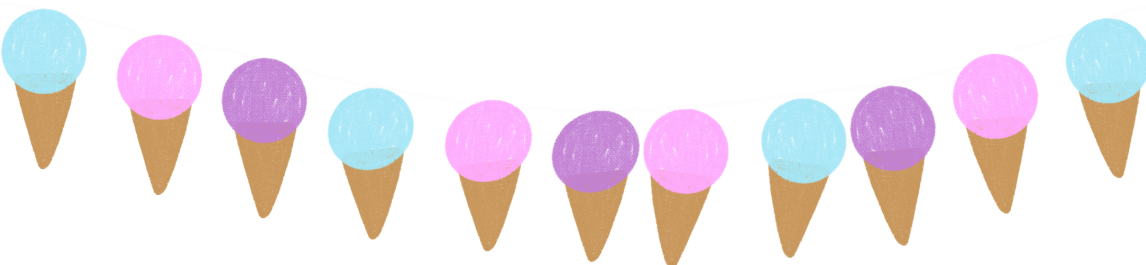


# Mint Chocolate Chip



## Adventurous

The combination of mint and chocolate provides a unique and adventurous flavor experience, perfect for those who enjoy trying new and exciting things.

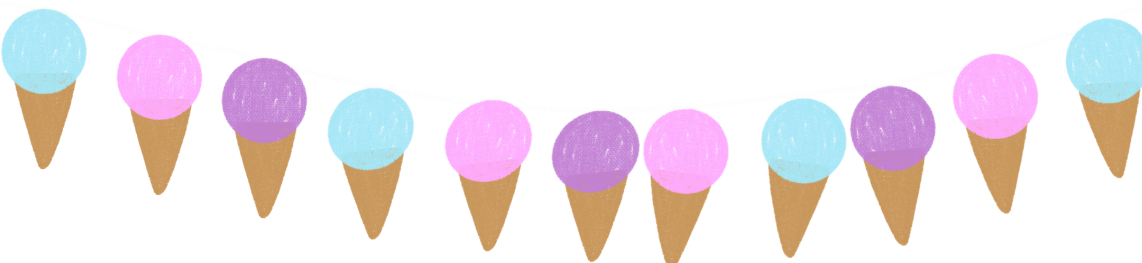


# Coffee



## Productive

Coffee-flavored ice cream might be a favorite for those who appreciate the energizing effects of coffee and value productivity.



# Rocky Road

## Resilient

Packed with nuts and marshmallows, Rocky Road represents resilience. It's a flavor for those who can navigate through life's challenges with a positive outlook.

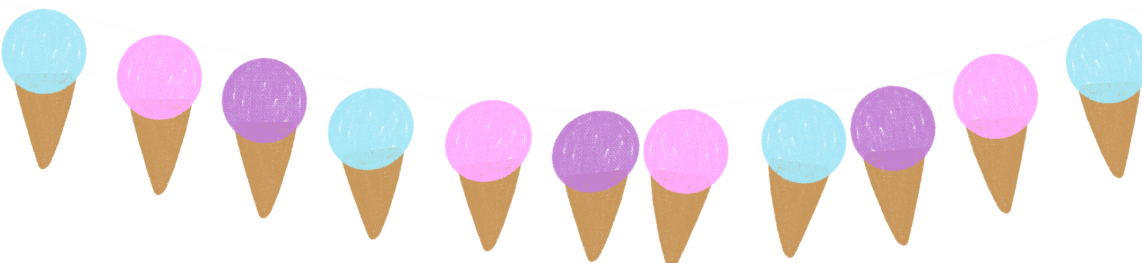


# Pistachio



## Artistic

Pistachio's unique and slightly unconventional flavor appeals to those with an artistic and creative mindset.

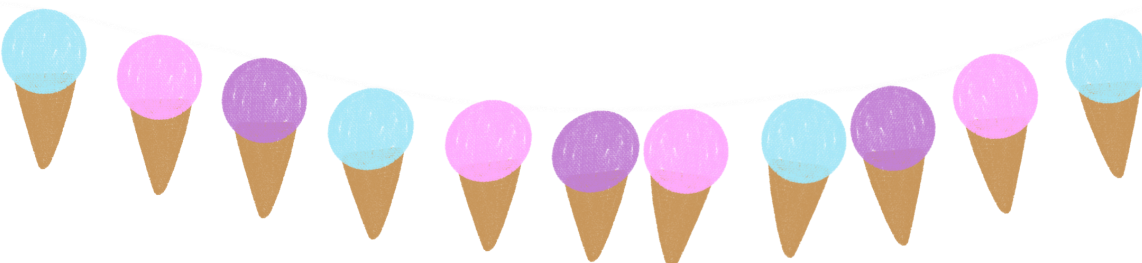


# Lemon Sorbet



## Refreshing

Lemon sorbet is light, zesty, and refreshing, making it a good match for individuals who bring a breath of fresh air into any situation.



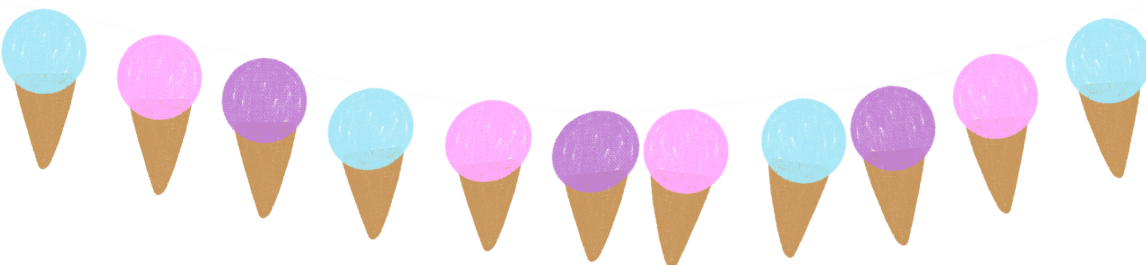


# Butter Pecan



## Nurturing

The warm and comforting taste of butter pecan may appeal to those with a nurturing personality, reminiscent of home-baked treats.



# Caramel Swirl



## Sweet-Talker

Caramel swirl represents the art of sweet-talking, making it a playful match for those who excel in communication and charm.

