

# File Vault Tool

## About File Vault

The Identity Finder product includes the File Vault tool which allows you to securely store your documents with a password and encryption. The File Vault tool can be accessed from inside the Identity Finder program installed on your computer.

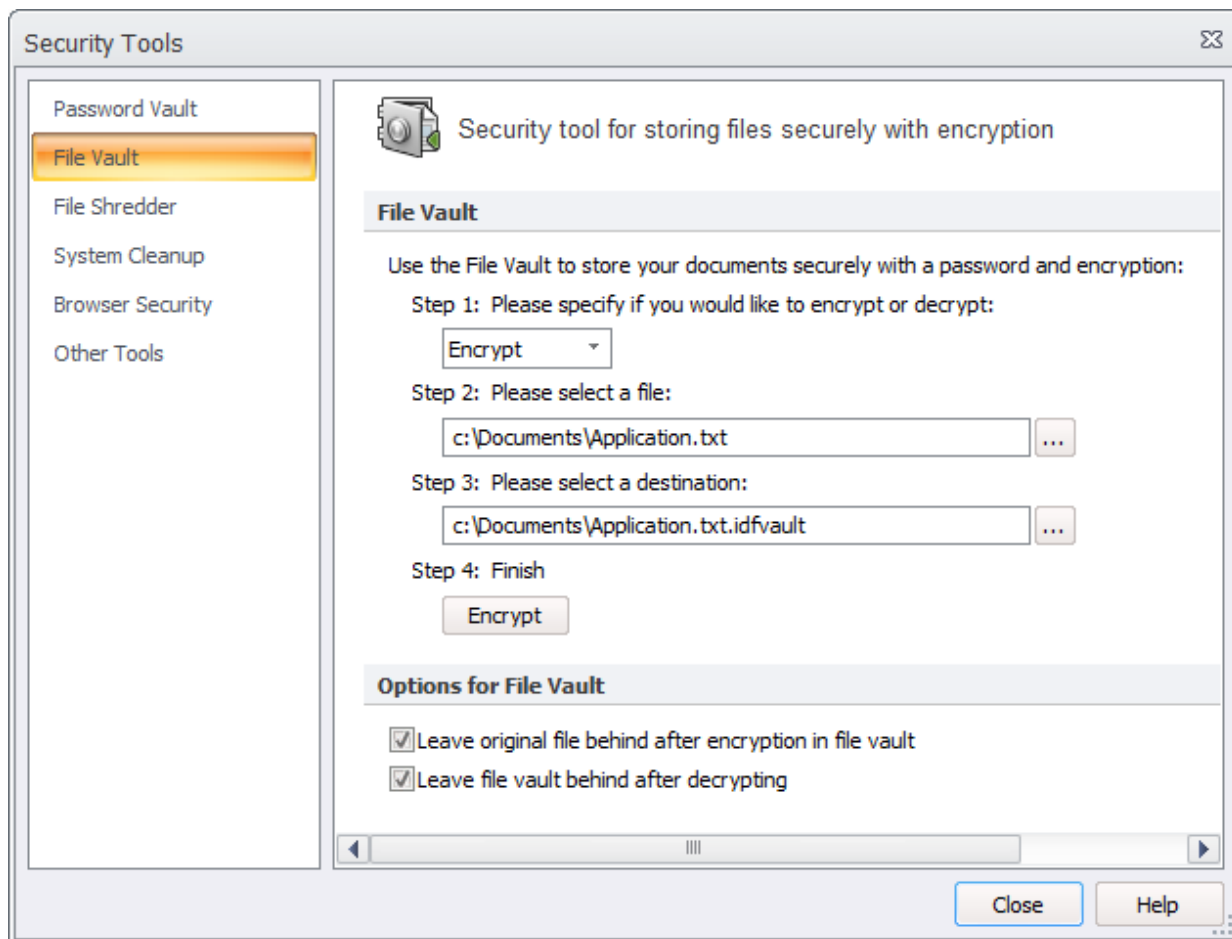
### Adding and Modifying Files

Log in to **Identity Finder** and select the **Tools** tab on the ribbon bar. Select either **Add to File Vault** or **Open File Vault**.



### Using the vault:

1. Specify if you would like to **Encrypt** or **Decrypt** a file (when adding a new file, select **Encrypt**).
2. Select a file by clicking the Browse [...] button.
3. Select a destination by clicking the Browse [...] button.
4. To finish click on the **Encrypt** or **Decrypt** button (when adding a new file, select **Encrypt**).



You will be prompted to either use your existing Identity Finder Profile Password or create a new password that will be unique to this file.

Note: There are two Options listed for the File Vault. Click the links below for additional information:

- » [Leaving Original File Behind After Encryption Inside File Vault](#)
- » [Leaving File Vault Behind After Decrypting](#)

You can also add and encrypt a file by simply browsing to the file on your computer. Once you have located the file you would like to encrypt, right-click the file, select **Identity Finder Endpoint**, then select **Secure within Vault**. You will be prompted to enter and confirm a unique password.

# Documents library

Sample Files

Arrange by: Folder ▾

Name	Date modified	Type	Size
Identity Finder Encrypted File	4/23/2015 1:03 PM	Text Document	0 KB

- Open
- Print
- Edit
- McAfee File and Removable Media Protection
- Move to Dropbox
- Identity Finder Endpoint**
- Open with
- Share with
- Scan for threats...
- Restore previous versions
- Send to
- Cut
- Copy
- Create shortcut
- Delete
- Rename
- Open file location
- Properties

- Search
- Share
- Secure within Vault**

Encrypted File Date modified: 4/23/2015 1:03 PM  
Size: 0 KB