

UTAH VALLEY UNIVERSITY

DEPARTMENT OF THEATRICAL ARTS FOR STAGE AND SCREEN

# learning STAGE

IMAGINATION • CREATIVITY • INNOVATION

FALL 2017

VOLUME IX, NUMBER 3

## *A Year with Frog & Toad*

### In this Issue:

Friendship & Cookies Page 2

Designing the Seasons Page 3

Spotting animals: I Spy! Page 4

MUSIC BY **ROBERT REALE**

BOOK AND LYRICS BY **WILLIE REALE**

BASED ON THE BOOKS BY **ARNOLD LOBEL**

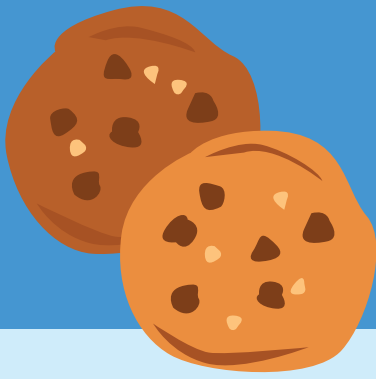
ORIGINALLY PRESENTED ON BROADWAY BY BOB BOYETT,  
ADRIANNE LOBEL, MICHAEL GARDNER, LAWRENCE HOROWITZ

WORLD PREMIERE AT THE CHILDREN'S THEATRE COMPANY MINNEAPOLIS, MINNESOTA

DIRECTED BY **LISA HALL HAGEN**

A YEAR WITH FROG AND TOAD IS PRESENTED THROUGH SPECIAL ARRANGEMENT WITH MUSIC THEATRE INTERNATIONAL (MTI).  
ALL AUTHORIZED PERFORMANCE MATERIALS ARE ALSO SUPPLIED BY MTI. [WWW.MTISHOWS.COM](http://WWW.MTISHOWS.COM)





# Friendship & Cookies

**In this play, Toad sings about his best friend Frog:**

*He knows just the thing to say, that will brighten up my day, Oh Frog has been a lovely friend to me!*



**Logan Johnson** plays **Toad**, his favorite cookie flavor is **Peanut Butter Chocolate**.

"My best friend is Whitney, but I call her "Whibs" and she calls me "Loge Boge". She is outgoing and smart, and she says I'm artsy. Whitney makes me laugh by quoting obscure movies, and she says my best talent is working with computer graphics. The nicest thing she does for me is sit with me through "therapy sessions" over many jars of pickle spears. I would have never pursued my dreams without my best friend. We go together like 'Rama lama lama ka dinga da dinga dong!'"



**Jordan Briggs** plays **Frog**, his favorite cookie flavor is **Chocolate Chip. Or Snickerdoodle. Or White Chocolate Macademia Nut.**

"My best friend is Ardon. He is passionate and loyal, he says I'm funny and caring. He says my best talent is singing, and I think he has an incredible talent for acting as well as caring for those close to him. We go together like peanut butter and jelly."



**Kailey Azure Green** plays **Bird, Snail, Lizard, & Mole**, her favorite cookie flavor is **Banana Oatmeal Chocolate Chip**.

"My best friend is Amber. She is passionate and witty, and she says I'm kind, strong, and compassionate. Amber makes me laugh by making silly faces, and she says my best talent is bringing sunshine to everyone I meet. We go together like Alice and the Mad Hatter."



**Tianna Maxwell** plays **Bird, Mouse, Squirrel, & Mole**, her favorite cookie flavor is **Oreos!**

"My best friend is Kara. She is kind, intelligent, talented, and loving, and she says I'm loving, kind, and crazy. She makes me laugh by quoting funny memes, and she says my best talent is befriending people. She is constantly watching out for others and always want to help those in need. We go together like 'Rama lama lama ka dinga da dinga dong!'"



**Becca Ashton** plays **Bird, Turtle, Squirrel, & Mole**, her favorite cookie flavor is **Chocolate Chip made without the chocolate chips**.

"My best friend is Krista. She is devoted, honest, and hilarious, and she says I'm better than Sandra Bullock. Krista makes me laugh by never hiding her enthusiasm for the littlest things, and she says my best talent is making people feel loved. We go together like Lucy and Ethel."

# Designing the Seasons

This play takes place over a whole year, and the characters experience Spring, Summer, Fall, & Winter. The people who made the set, costumes, props, and lights for the show capture the seasons in different ways.

**SPRING**



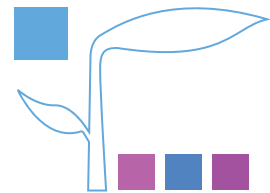
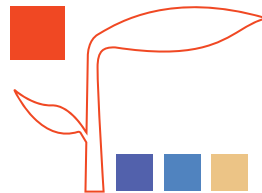
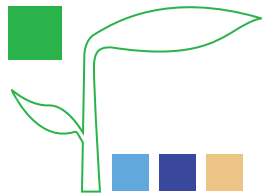
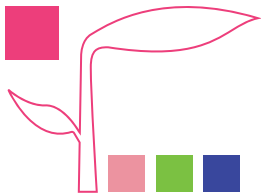
**SUMMER**



**FALL**



**WINTER**



**Match two activities to each season:**

**SPRING**

**SUMMER**

**FALL**

**WINTER**

Telling spooky stories

Cleaning

Sledding

Swimming

Planting seeds

Giving gifts

Flying kites

Raking leaves

## Spotting animals:

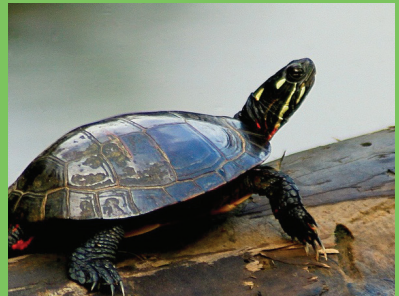


# I-SPY!

All of these animals are represented in the play, but they will look very different!



Can you spot them?



### SOURCES:

Images: Frog: [https://commons.wikimedia.org/wiki/File:Frog\\_on\\_bough.jpg](https://commons.wikimedia.org/wiki/File:Frog_on_bough.jpg), Toad: <https://commons.wikimedia.org/wiki/File:Toad#/media/File:Toad7.jpg>, Snail: [https://commons.wikimedia.org/wiki/File:Common\\_snail.jpg](https://commons.wikimedia.org/wiki/File:Common_snail.jpg), Birds: [https://commons.wikimedia.org/wiki/File:Agapornis\\_fischeri\\_Ueno\\_Zoo\\_Japan\\_three-8a-4c.jpg](https://commons.wikimedia.org/wiki/File:Agapornis_fischeri_Ueno_Zoo_Japan_three-8a-4c.jpg), Squirrel: [https://commons.wikimedia.org/wiki/File:Squirrel\\_posing.jpg](https://commons.wikimedia.org/wiki/File:Squirrel_posing.jpg), Mole: [https://commons.wikimedia.org/wiki/File:Talpa\\_europaea#/media/File:European\\_mole\\_animal.jpg](https://commons.wikimedia.org/wiki/File:Talpa_europaea#/media/File:European_mole_animal.jpg), Mouse: [https://commons.wikimedia.org/wiki/File:Harvest\\_Mouse\\_-\\_British\\_Wildlife\\_Centre\\_\(17333234195\).jpg](https://commons.wikimedia.org/wiki/File:Harvest_Mouse_-_British_Wildlife_Centre_(17333234195).jpg), Lizard: [https://commons.wikimedia.org/wiki/File:Collared\\_Lizard\\_4.jpg](https://commons.wikimedia.org/wiki/File:Collared_Lizard_4.jpg), Turtle: [https://commons.wikimedia.org/wiki/File:Painted\\_Turtle\\_on\\_a\\_log\\_mirrored.jpg](https://commons.wikimedia.org/wiki/File:Painted_Turtle_on_a_log_mirrored.jpg)

### CREDITS:

Learning Stage is published by the Theatre for Youth and Education (TYE) Center at UVU. This issue was edited by dramaturg Lisa Hall Hagen with content provided by Jordan Briggs, Logan Johnson, Becca Ashton, Kailey Azure Green and Tianna Maxwell. Costume design by Chris Lancaster. Lighting design by Aaron Gubler. Graphic Design by Jason Warren