

IPEDS ENROLLMENT AND GRADUATION REPORT

2007 Data

February 1, 2010
UWEP 2010-202



*Office of the Utah Women & Education Project
Utah Valley University*

Acknowledgements

Funding for this report came from a Utah State Office of Education Leadership Grant (2009-2010) and Utah Valley University. Support was also provided by the Utah System of Higher Education (USHE). The raw data used in this report was mined from the Integrated Postsecondary Education Data System (IPEDS) and was analyzed by A. David King and Dr. Susan R. Madsen. Additional feedback and insights were provided by the following individuals: Susan Thackeray, Cheryl Hanewicz, Doug Gardner, Kathie Debenham, Robert Loveridge, and Nicolle Johnson.

A. David King, B.S.
M.Stat. Graduate Student in Econometrics
University of Utah

Susan R. Madsen, Ed.D.
Director of the Utah Women & Education Project
Utah Valley University

Copyright © 2010 by the Office of the Utah Women and Education Project (UWEP) at Utah Valley University. All rights reserved. Printed in the United States of America. This publication, or parts thereof, may not be reproduced in any form without permission of UWEP.

Utah Women and Education Project
Utah Valley University
Dr. Susan R. Madsen, Director
800 West University Parkway, MS 119
Orem, Utah 84058
madsensu@uvu.edu
801.863.6888

Table of Contents

INTRODUCTION

Acknowledgments	1
Table of Contents	2
List of Tables and Figures	3
Background Information (including report acronyms)	4

PART I: ENROLLMENT

Section 1	Utah Public vs. National Public Institutions	5
Section 2	USHE, Private Not-For-Profit, and Combined	10
Section 3	Institutional Breakdown; USHE and Private Not-For-Profit	11
Section 4	Utah Categories	13
Section 5	Enrollment for All Types of Utah Institutions	14
Section 6	Longitudinal Data	16

PART II: GRADUATION

Section 7	Utah Institution Type	19
Section 8	Utah Public and Private Not-For-Profit	23

PART III: APPENDICES

Appendix A	Classification of Utah Institutions	25
Appendix B	Population Counts	28

List of Tables and Figures

TABLES

Table 1.1	Percentage of Female Enrollment	5
Table 1.2	Percentage of Female Enrollment by Level of Student	9
Table 2.1	Percentage of Female Enrollment by School Control	10
Table 3.1	Individual Utah School Breakdown of Enrollment Variables	11,12
Table 4.1	Utah Students by Type of Institution Attending	13
Table 5.1	Individual School Enrollment Totals	14,15
Table 6.1	Percentage of 18 to 24 Year Olds Attending Postsecondary Institutions	16
Table 7.1	Female Graduation Rate by Utah Degree Type	19
Table 7.2	Female Graduation Rate by Utah School Type	20
Table 7.3	Percent of Graduates that are Female by Degree Type	21
Table 7.4	Percent Female Graduation by Degree	22
Table 8.1	Graduation Numbers for Utah Public and Private Not-For-Profit	23
Table 8.2	Graduation Percentages for Utah Public and Private Not-For-Profit	24
Appendix B.1	Population Counts for 18 to 24 Year Olds (All Institutions)	28
Appendix B.2	Census Population Counts for 18 to 24 Year Olds and those Attending Public Institutions	29

FIGURES

Figure 1.1	Female Enrollment by State	6
Figure 1.2	First Time Female Enrollment by State	6
Figure 1.3	Percentage of 18-24 Year Olds Going to College	7
Figure 1.4	Percentage of Females by Enrollment Status	7
Figure 1.5	Percentage of Females Enrolled by Age	8
Figure 1.6	Percentage of Females Enrolled by Student Status	8
Figure 1.7	Percentage of Females Enrolled by Academic Level	9
Figure 4.1	Institution Type Females are Attending in Utah	13
Figure 6.1	Percentage of 18-24 Year Old Females Enrolled in Postsecondary Institutions by Year	16
Figure 6.2	Percentage of 18-24 Year Old Males Enrolled in Postsecondary Institutions by Year	17
Figure 6.3	Percent Female Enrollment Benchmark Comparison by Year	17
Figure 6.4	Percent 18-24 Female Enrollment by Year	18
Figure 6.5	Percent Female Enrollment by Year	18
Figure 7.1	Female graduation Rate by Award Level and Institution Type	19
Figure 7.2	Percent of Females Graduating from Postsecondary Education	20
Figure 7.3	Percent of Graduates who are Female by Degree Type	21

Background Information

The raw data from this report was downloaded from the Integrated Postsecondary Education Data System (IPEDS). The initial download included 6892 institutions. Utah had 63 postsecondary institutions listed during the 2007 year. Almost all variables had data; however, certain variables were not reported by some institutions. For example; only 43 institutions reported part-time/full-time enrollment status. All enrollment variables had at least 30 institutions that reported numbers and can be used to generalize the state of women and higher education in Utah.

We hoped to report on patterns in Utah institutions related to admission, application, enrollment, and graduation; however, there was not enough data in the 2007 IPEDS data set on admission, application, and even some graduation statistics to do so.

In the state of Utah there is some disparity between “Public Institutions” and the Utah System of Higher Education (USHE) institutions (see Appendix A for lists of institutions within the various report categories). We cannot do national comparisons directly with our USHE institutions. Therefore, all national comparisons reported in this document use Utah “Public Institutions” rather than exclusively our USHE institutions.

REPORT ACRONYMS

IPEDS	Integrated Postsecondary Education Data System
STEM	Science, Technology, Engineering, and Mathematics
USHE	Utah System of Higher Education

PART I: ENROLLMENT

Section 1: Utah Public vs. National Public Institutions

Table 1.1: Percentage of Female Enrollment				
Category (Enrollment Percents)	USHE	Utah Public	National Public	Difference*
Grand Total	47.90%	48.60%	56.60%	-8.00%
Full Time	47.10%	48.00%	54.80%	-6.80%
Part Time	48.80%	49.40%	59.30%	-9.90%
First Time Grand	49.80%	50.90%	53.30%	-2.40%
First Time Full Time	51.30%	52.40%	52.90%	-0.50%
First Time Part Time	45.50%	47.40%	53.50%	-6.10%
Age Under 18	58.70%	57.30%	59.50%	-2.10%
Age 18 to 19	60.30%	59.70%	54.40%	5.30%
Age 20 to 21	56.90%	57.50%	54.50%	3.00%
Age 22 to 24	36.50%	38.10%	54.20%	-16.10%
Age 25 and Over	41.90%	43.80%	60.40%	-16.60%
Caucasian / White	47.60%	48.40%	55.70%	-7.20%
African American / Black	37.80%	40.00%	58.40%	-18.40%
Hispanic	52.50%	52.70%	57.00%	-4.30%
Asian, Polynesian or Pacific Islander	47.90%	48.90%	54.00%	-5.10%
American Indian or Native Alaskan	52.50%	53.70%	58.00%	-4.30%
Race Unknown	45.90%	46.20%	54.10%	-8.00%
Nonresident Alien	44.30%	44.70%	49.80%	-5.10%
First Time Grand Total	49.80%	50.90%	53.30%	-2.40%
First Time Caucasian / White	50.00%	51.00%	51.90%	-0.90%
First Time African American / Black	36.80%	43.20%	54.40%	-11.20%
First Time Hispanic	53.90%	55.10%	54.20%	0.90%
First Time Asian, Polynesian or Pacific Islander	47.90%	51.00%	50.20%	0.80%
First Time American Indian or Native Alaskan	52.60%	52.40%	55.20%	-2.70%
First Time Race Unknown	48.20%	50.10%	52.40%	-2.20%
First Time Nonresident Alien	47.70%	47.30%	47.30%	0.00%

*This column reports the difference between “Utah Public” to “National Public.”

Note: Shaded rows (also in red) are those categories that showed a 5% difference or more between Utah Public and National Public.

Figure 1.1: Female Enrollment by State
 2007 Data, Public Institution
 Solid Red Bar Denotes Utah Average

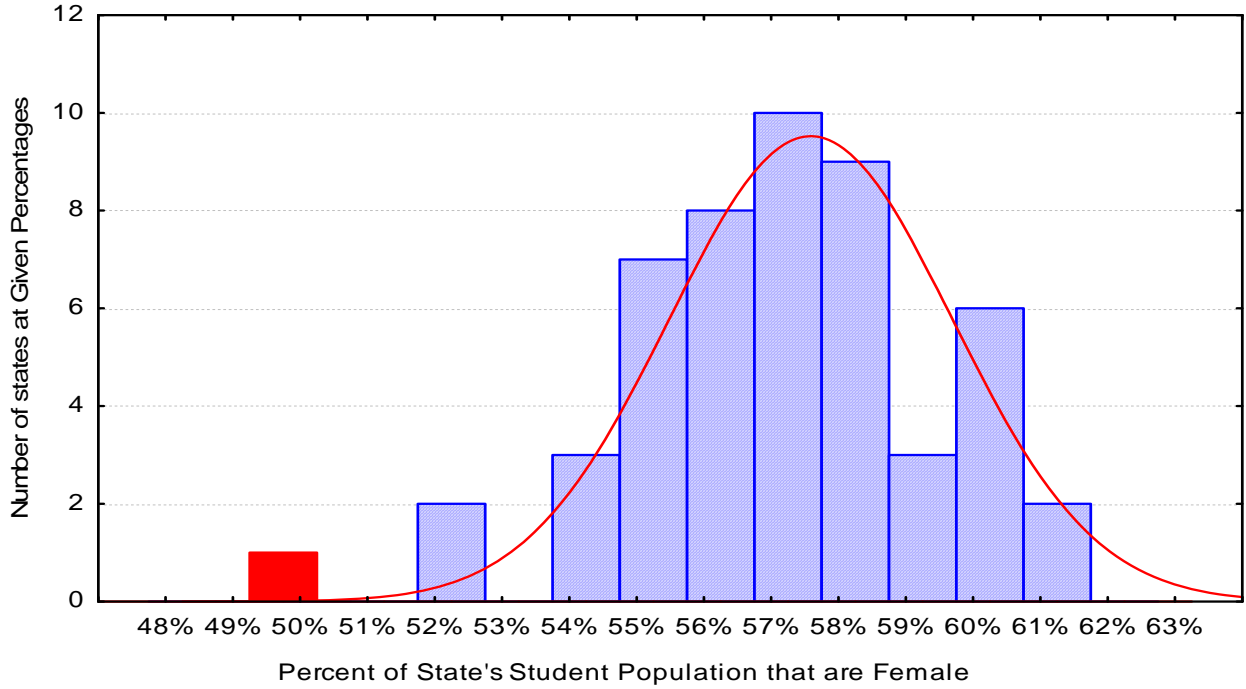


Figure 1.2: First Time Female Enrollment by State
 2007 Data, Public Institutions
 Solid Red Bar Denotes Utah Average

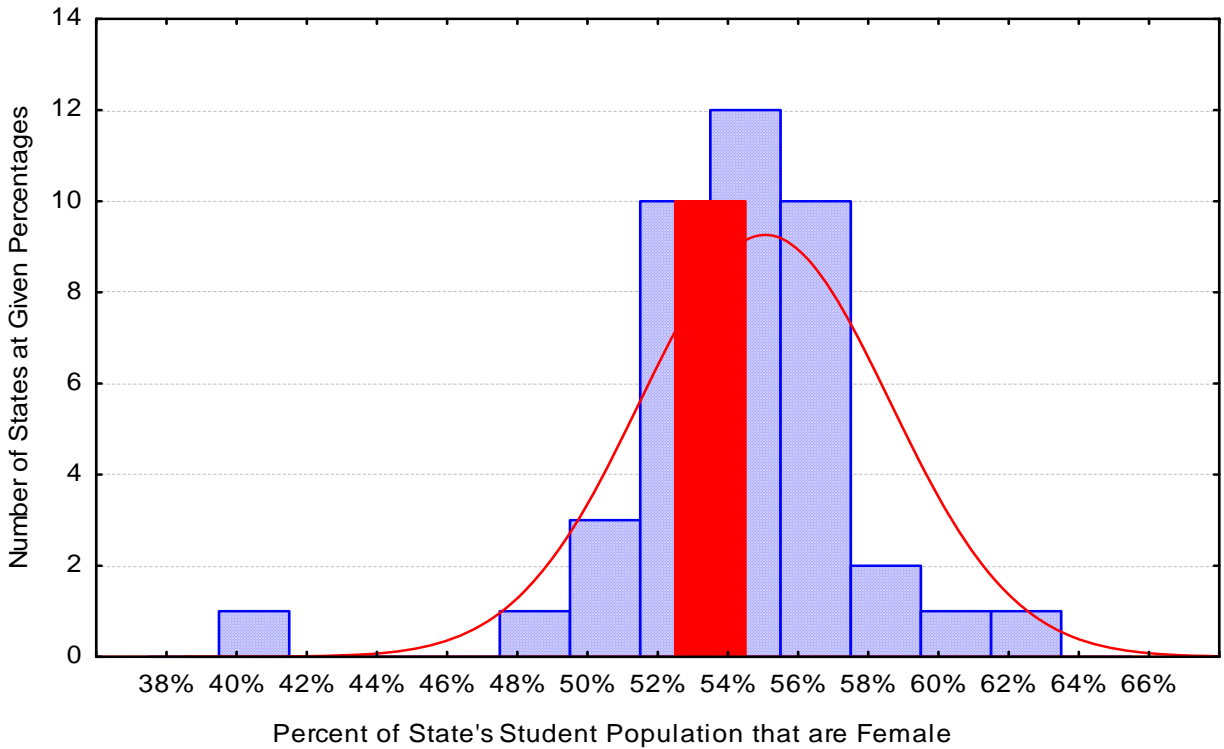


Figure 1.3: Percentage of 18-24 Year Olds Going to College
 2007 Enrollment Data, 2007 Census Estimates
 Public Institutions

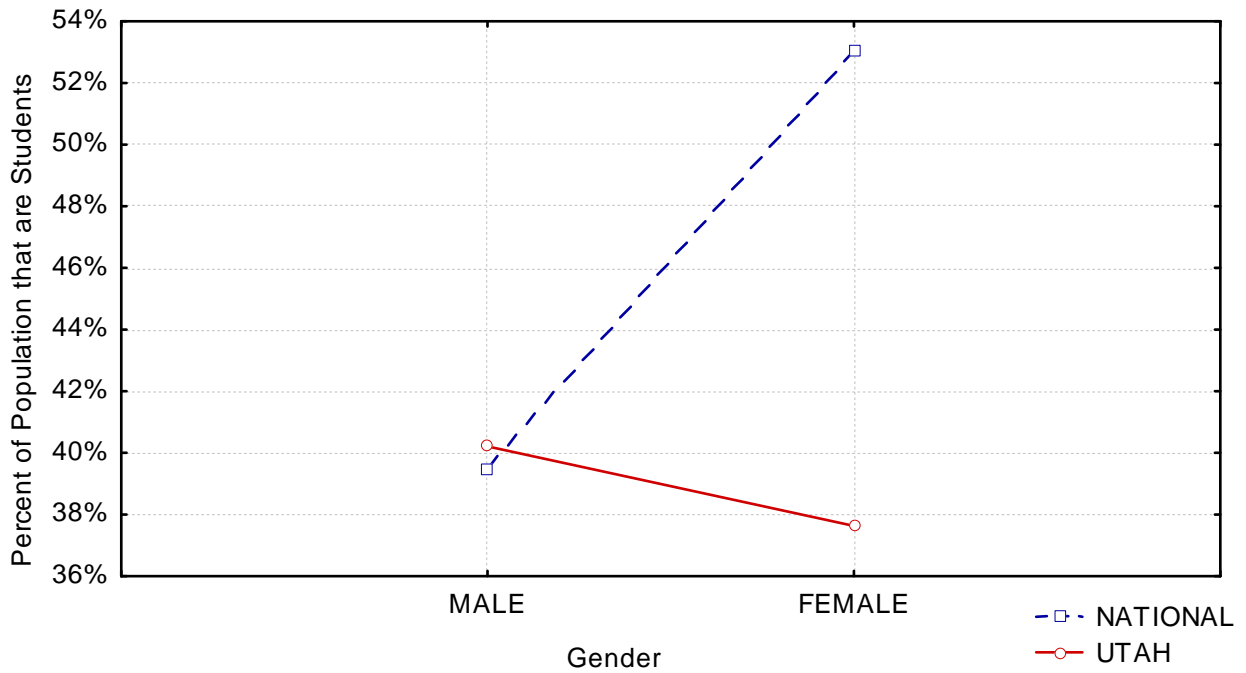


Figure 1.4: Percentage of Females by Enrollment Status
 2007 Data, Public Institutions

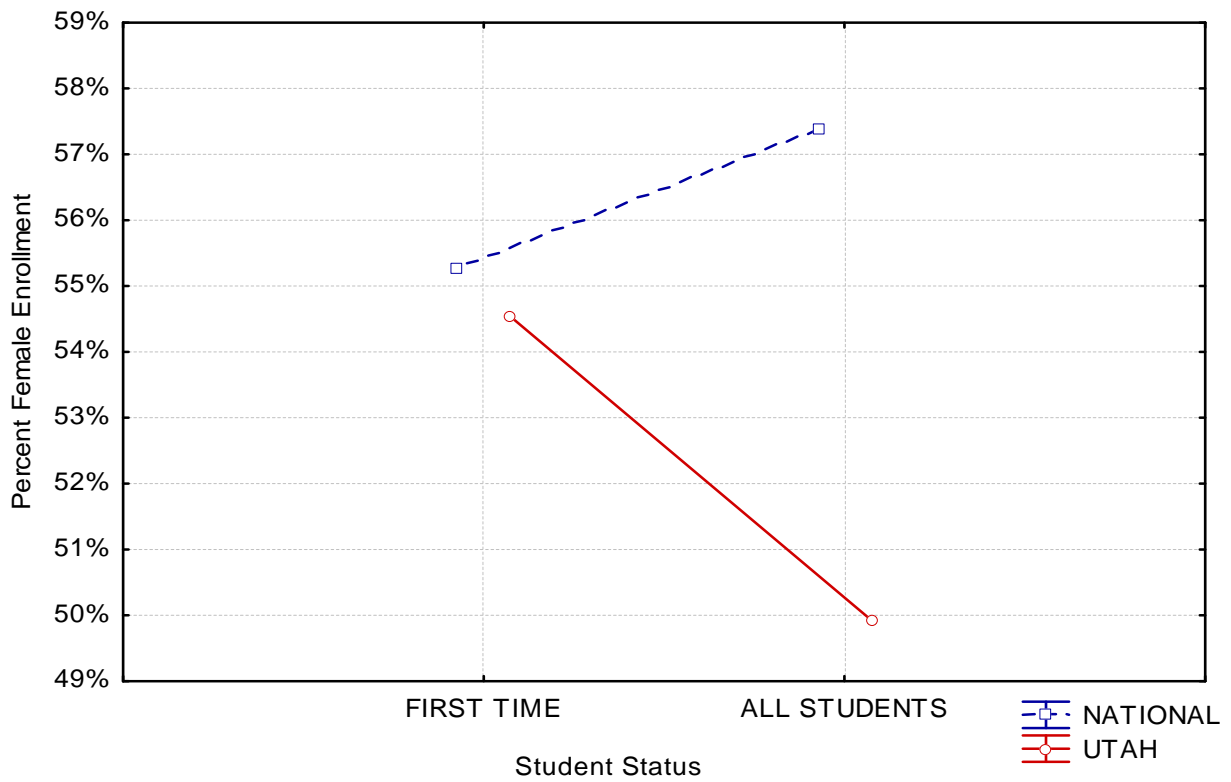


Figure 1.5: Percentage of Females Enrolled by Age
2007 Data, Public Institutions

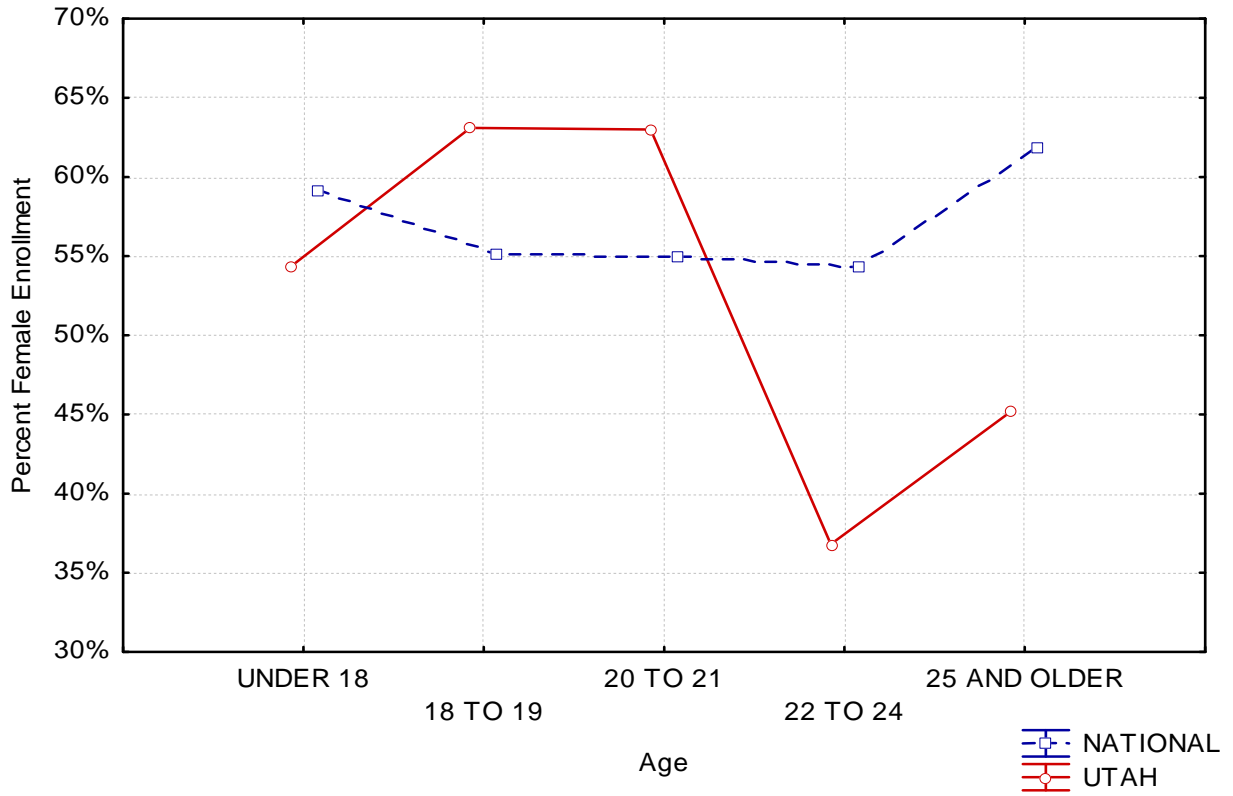


Figure 1.6: Percentage of Females Enrolled
by Student Status
2007 Data, Public Institutions

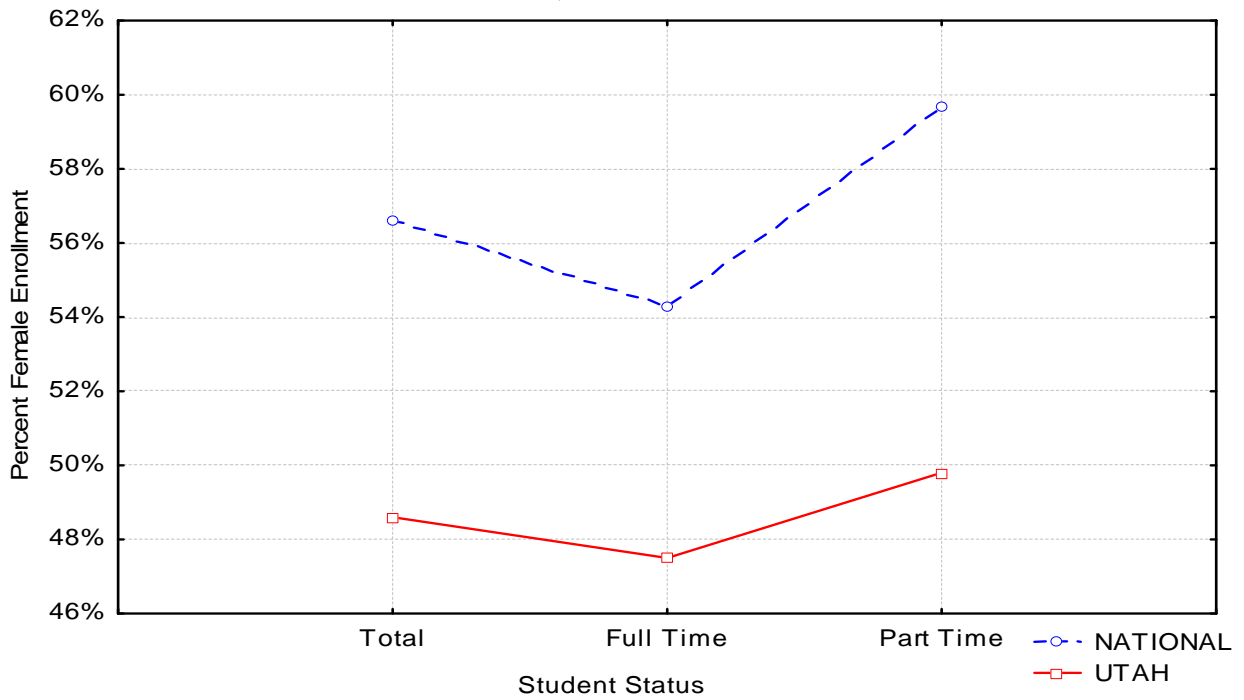
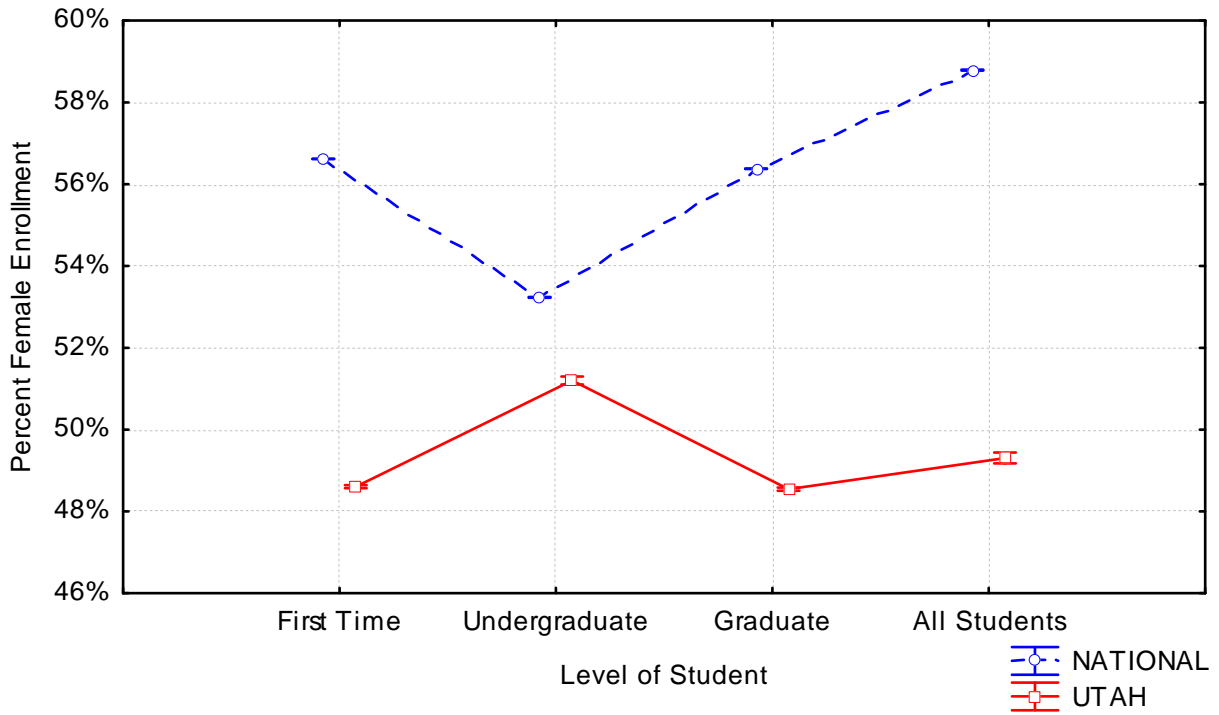


Table 1.2: Percentage of Female Enrollment by Level of Student			
Level of Student	Utah Female % Enrollment	National Female % Enrollment	Difference
First Time Students	51.20%	53.20%	-2.00%
Undergraduates Only	48.50%	56.40%	-7.90%
Graduate and First Professional	49.30%	58.80%	-9.50%
All Students	48.60%	56.60%	-8.00%

Note: Shaded rows (also in red) are those categories that showed a 5% difference or more.

Figure 1.7: Percentage of Females Enrolled by Academic Level
2007 Data, Public 4-Year Institutions



Section 2: USHE, Private Not-For-Profit, and Combined

Table 2.1: Percentage of Female Enrollment by School Control				
Category	USHE	Private Not-For-Profit*	Combined	Difference**
Grand Total	47.90%	48.40%	48.00%	-0.50%
Full Time	47.10%	50.30%	47.90%	-3.20%
Part Time	48.80%	46.60%	48.20%	2.20%
First Time Grand	49.80%	55.70%	51.20%	-6.00%
First Time Full Time	51.30%	56.50%	52.50%	-5.30%
First Time Part Time	45.50%	45.10%	45.40%	0.40%
Age Under 18	58.70%	57.90%	58.50%	0.80%
Age 18 to 19	60.30%	66.30%	61.70%	-6.00%
Age 20 to 21	56.90%	74.80%	61.20%	-18.00%
Age 22 to 24	36.50%	31.80%	35.30%	4.70%
Age 25 and Over	41.90%	31.00%	39.30%	11.00%
Caucasian / White	47.90%	48.40%	48.00%	-0.50%
African American / Black	47.60%	48.00%	47.70%	-0.30%
Hispanic	37.80%	54.30%	41.80%	-16.50%
Asian, Polynesian or Pacific Islander	52.50%	54.20%	52.90%	-1.70%
American Indian or Native Alaskan	47.90%	51.10%	48.70%	-3.20%
Race Unknown	52.50%	51.20%	52.20%	1.30%
Nonresident Alien	45.90%	54.40%	48.00%	-8.50%
First Time Grand Total	44.30%	48.30%	45.20%	-4.10%
First Time Caucasian / White	49.80%	55.70%	51.20%	-6.00%
First Time African American / Black	50.00%	55.30%	51.30%	-5.30%
First Time Hispanic	36.80%	61.00%	42.60%	-24.20%
First Time Asian, Polynesian or Pacific Islander	53.90%	59.20%	55.20%	-5.30%
First Time American Indian or Native Alaskan	47.90%	58.80%	50.50%	-11.00%
First Time Race Unknown	52.60%	59.90%	54.40%	-7.20%
First Time Nonresident Alien	48.20%	57.40%	50.40%	-9.30%
Grand Total	47.70%	55.60%	49.50%	-7.90%

*Private Not-For-Profit includes three institutions: BYU, Westminster, and LDS Business College

**This column reports the difference between USHE and Private Not-For-Profit.

Note: Shaded rows (also in red) are those categories that showed a 5% difference or more between USHE and Private Not-For-Profit.

Section 3: Institutional Breakdown; USHE and Private Not-For-Profit

Table 3.1: Individual Utah School Breakdown of Enrollment Variables						
Category	CEU	DSC	SC	SLCC	SUU	USU
Grand Total	58.10%	54.00%	52.30%	48.60%	56.60%	47.80%
Full Time	53.40%	52.40%	<i>54.50%</i>	48.70%	55.10%	48.40%
Part Time	63.40%	56.00%	49.50%	48.50%	60.40%	45.20%
First Time Grand	53.20%	55.50%	52.70%	46.90%	59.60%	56.00%
First Time Full Time	52.40%	57.30%	53.70%	50.60%	60.00%	56.70%
First Time Part Time	60.80%	48.40%	45.40%	43.40%	53.80%	48.00%
Age Under 18	59.10%	<i>57.90%</i>	49.20%	<i>74.00%</i>	58.40%	57.10%
Age 18 to 19	58.50%	<i>64.90%</i>	<i>63.50%</i>	<i>57.00%</i>	<i>67.60%</i>	<i>68.70%</i>
Age 20 to 21	50.00%	55.80%	45.00%	51.50%	<i>65.40%</i>	<i>63.50%</i>
Age 22 to 24	46.90%	33.60%	22.60%	38.10%	37.50%	30.50%
Age 25 and Over	<i>65.70%</i>	51.50%	50.70%	47.60%	52.00%	31.50%
Caucasian / White	54.70%	54.10%	53.10%	48.30%	57.00%	48.60%
African American / Black	N/A*	40.00%	N/A	38.90%	38.70%	38.10%
Hispanic	52.60%	55.50%	50.00%	52.20%	58.40%	51.40%
Asian, Polynesian or Pacific Islander	N/A	42.70%	26.00%	52.30%	51.20%	45.40%
American Indian or Native Alaskan	<i>82.10%</i>	<i>69.60%</i>	56.30%	48.50%	58.50%	42.30%
Race Unknown	53.10%	50.80%	N/A	46.70%	57.50%	46.30%
Nonresident Alien	N/A	N/A	48.60%	48.60%	37.30%	39.00%
First Time Grand Total	53.20%	55.50%	52.70%	46.90%	59.60%	56.00%
First Time Caucasian / White	52.40%	55.90%	<i>54.50%</i>	47.10%	59.90%	56.90%
First Time African American / Black	N/A	N/A	N/A	34.70%	N/A	N/A
First Time Hispanic	N/A	57.50%	44.70%	50.70%	<i>70.40%</i>	58.40%
First Time Asian, Polynesian or Pacific Islander	N/A	45.50%	23.40%	47.80%	41.90%	<i>63.40%</i>
First Time American Indian or Native Alaskan	<i>70.50%</i>	N/A	N/A	42.90%	N/A	N/A
First Time Race Unknown	43.80%	N/A	N/A	41.20%	N/A	53.10%
First Time Nonresident Alien	N/A	N/A	<i>57.10%</i>	<i>65.00%</i>	N/A	40.20%

*N/A means that there is not enough respondents to provide valuable percentages

Blue Highlight/Italics: Strength of institution relative to self.

Red Highlight/Shaded Box: Weakness of institution relative to self.

Table 3.1 (cont.): Individual Utah School Breakdown of Enrollment Variables						
Category	U of U	UVU	WSU	BYU	LDSBC	WC
Grand Total	44.70%	42.90%	51.00%	48.10%	52.50%	54.30%
Full Time	44.20%	42.20%	47.90%	48.30%	50.50%	56.40%
Part Time	46.00%	43.70%	54.40%	46.60%	58.30%	46.40%
First Time Grand	48.10%	45.00%	50.90%	55.30%	57.30%	59.30%
First Time Full Time	49.00%	46.80%	51.20%	55.40%	57.90%	59.80%
First Time Part Time	42.30%	42.00%	50.30%	45.20%	53.80%	N/A
Age Under 18	48.10%	<i>53.60%</i>	<i>63.80%</i>	58.90%	N/A	N/A
Age 18 to 19	54.40%	<i>60.90%</i>	<i>61.50%</i>	<i>68.00%</i>	<i>64.60%</i>	61.80%
Age 20 to 21	<i>58.00%</i>	<i>56.10%</i>	<i>58.50%</i>	<i>76.90%</i>	<i>85.10%</i>	57.20%
Age 22 to 24	42.30%	29.30%	41.70%	29.40%	31.50%	55.00%
Age 25 and Over	39.20%	33.10%	47.10%	28.00%	47.30%	46.90%
Caucasian / White	43.70%	43.20%	50.20%	47.60%	55.10%	53.70%
African American / Black	42.00%	31.50%	44.00%	53.80%	N/A	N/A
Hispanic	55.70%	46.30%	54.20%	53.10%	55.10%	<i>68.60%</i>
Asian, Polynesian or Pacific Islander	50.60%	46.30%	47.20%	50.00%	N/A	54.30%
American Indian or Native Alaskan	<i>58.80%</i>	46.90%	52.20%	51.70%	N/A	N/A
Race Unknown	46.90%	29.70%	52.80%	54.40%	N/A	51.60%
Nonresident Alien	40.40%	46.70%	45.80%	48.30%	40.70%	52.30%
First Time Grand Total	48.10%	45.00%	50.90%	55.30%	57.30%	59.30%
First Time Caucasian / White	46.80%	45.20%	52.60%	55.10%	<i>60.60%</i>	57.70%
First Time African American / Black	38.60%	27.80%	N/A	N/A	N/A	N/A
First Time Hispanic	<i>56.30%</i>	47.40%	54.00%	58.90%	N/A	<i>66.70%</i>
First Time Asian, Polynesian or Pacific Islander	52.10%	47.50%	39.00%	55.80%	N/A	N/A
First Time American Indian or Native Alaskan	N/A*	41.70%	N/A	N/A	N/A	N/A
First Time Race Unknown	52.80%	39.70%	47.60%	55.70%	N/A	62.50%
First Time Nonresident Alien	44.10%	31.30%	51.20%	56.10%	N/A	N/A

*N/A means that there are not enough respondents to provide valuable percentages

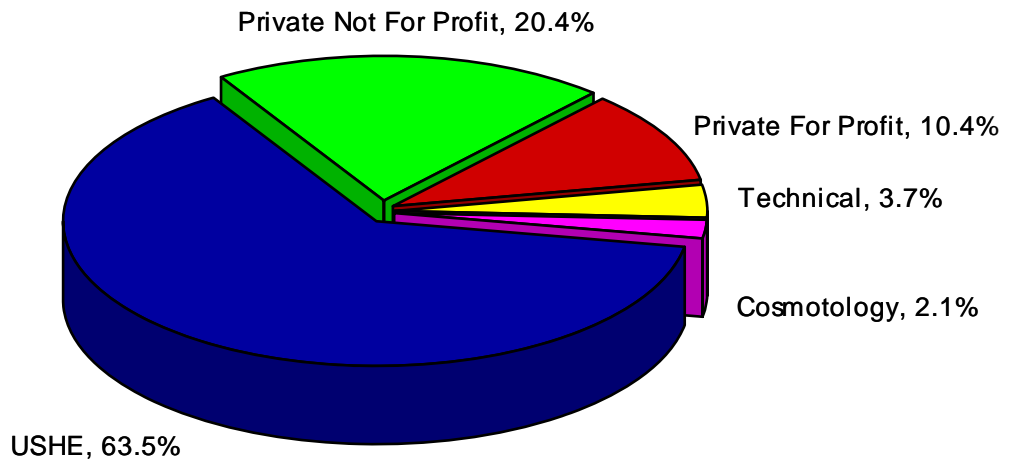
Blue Highlight/Italics: Strength of institution relative to self.

Red Highlight/Shaded Box: Weakness of institution relative to self.

Section 4: Utah Categories

Table 4.1: Utah Students by Type of Institution Attending					
Utah Institutional Category	Number of Institutions Submitting Data	Total Number of Female Students	Percent of Total Female Students	Total Number of Male Students	Percent of Total Male Students
USHE	9	61547	63.50%	67012	67.30%
Private Not-For-Profit	4	19738	20.40%	21075	21.20%
Private For-Profit	18	10066	10.40%	6826	6.90%
Technical	9	3566	3.70%	4465	4.50%
Cosmetology	22	2037	2.10%	171	0.20%
Total	62	96954	100.00%	99549	100%

Figure 4.1: Institution Type Females are Attending in Utah



Female Enrollment Percentages

Note: See Appendix A for breakdown of institution classifications

Section 5: Enrollment for All Types of Utah Institutions

Table 5.1: Individual School Enrollment Totals			
Institution	Enrollment Total	Enrollment Male	Enrollment Female
AmeriTech College	327	75	252
AmeriTech College 2	134	14	120
Bridgerland Applied Technology College	467	230	237
Brigham Young University	34174	17749	16425
Cameo College of Essential Beauty	170	2	168
Careers Unlimited	66	1	65
Certified Careers Institute	92	5	87
Certified Careers Institute	75	3	72
College of Eastern Utah	2085	873	1212
Davis Applied Technology College	2662	1485	1177
DeVry University-Utah	55	34	21
Dixie State College of Utah	5598	2577	3021
Eagle Gate College	125	42	83
Eagle Gate College	325	109	216
Eagle Gate College	310	101	209
Echelon Edge Academy Of Hair Skin and Nails	97	2	95
Evans Hairstyling College	39	2	37
Evans Hairstyling College	66	2	64
Everest College-West Valley City	147	36	111
Fran Brown College of Beauty	188	1	187
Hairitage Hair Academy	57	0	57
Healing Mountain Massage School	9	3	6
ImageWorks Academy of Hair Design	52	0	52
ITT Technical Institute-Murray	654	569	85
Latter Day Saints Business College	1316	625	691
Maximum Style Tec School of Cosmetology	22	0	22
Mountainland Applied Technology College	918	263	655
Myotherapy College of Utah	58	3	55
Neumont University	277	260	17
Ogden Institute of Massage Therapy	41	6	35
Ogden-Weber Applied Technology College	4302	2576	1726
Paul Mitchell the School-Provo	271	12	259
Paul Mitchell the School-Salt Lake City	318	47	271
Premier Hair Academy	42	1	41
Provo College	333	92	241
Renaissance School of Therapeutic Massage	15	1	14

Table 5.1 (Cont.): Individual School Enrollment Totals			
Institution	Enrollment Total	Enrollment Male	Enrollment Female
Salt Lake Community College	25235	12981	12254
Sherman Kendalls Academy of Beauty Arts & Sciences	34	0	34
Sherman Kendall's Academy-Sugarhouse	49	5	44
Skinworks School of Advanced Skincare	59	1	58
Snow College	3745	1786	1959
Southern Utah University	7057	3066	3991
Southwest Applied Technology Center	584	422	162
Staceys Hands of Champions	86	2	84
Stevens Henager College-Logan	207	111	96
Stevens-Henager College	433	184	249
Stevens-Henager College of Business-Provo	144	60	84
Stevens-Henager College-Ogden	397	161	236
The Art Institute of Salt Lake City	96	42	54
Uintah Basin Applied Technology College	805	383	422
University of Phoenix-Utah Campus	3678	1981	1697
University of Utah	28025	15486	12539
Utah Career College	661	118	543
Utah Career College-Layton	289	40	249
Utah College of Massage Therapy Inc	123	28	95
Utah College of Massage Therapy Inc-Utah Valley	238	52	186
Utah State University	14893	7775	7118
Utah State University-Continuing Education	10736	4222	6514
Utah Valley University	23840	13606	10234
Weber State University	18081	8862	9219
Western Governors University	9022	3379	5643
Westminster College	2661	1216	1445
Total	207065	103770	103295

Section 6: Longitudinal Data

Year	Percent of National Males 18-24 Going to School	Percent of National Females 18-24 Going to School	Percent of Utah Males 18-24 Going to School	Percent of Utah Females 18-24 Going to School	Percent of National Students that are Female	Percent of Utah Students that are Female
1987	24.73%	26.08%	33.41%	30.99%	54.00%	47.60%
1991	26.06%	29.69%	36.06%	37.41%	55.10%	49.70%
1993	27.94%	31.96%	35.68%	38.43%	55.60%	50.40%
1995	28.03%	33.05%	33.21%	37.04%	56.00%	50.60%
1997	28.63%	34.68%	34.14%	37.16%	56.20%	51.20%
1999	28.45%	35.14%	33.52%	36.41%	56.30%	50.30%
2001	28.64%	36.37%	33.21%	35.49%	56.40%	49.60%
2003	30.08%	38.87%	31.61%	35.34%	57.30%	49.80%
2005	30.85%	40.09%	31.12%	36.90%	57.40%	49.80%
2007	32.15%	41.39%	32.11%	38.32%	57.10%	50.00%

Figure 6.1: Percentage of 18-24 Year Old Females Enrolled in Postsecondary Institutions by Year
18-24 Students (IPEDS) / 18-24 Residents (Census)

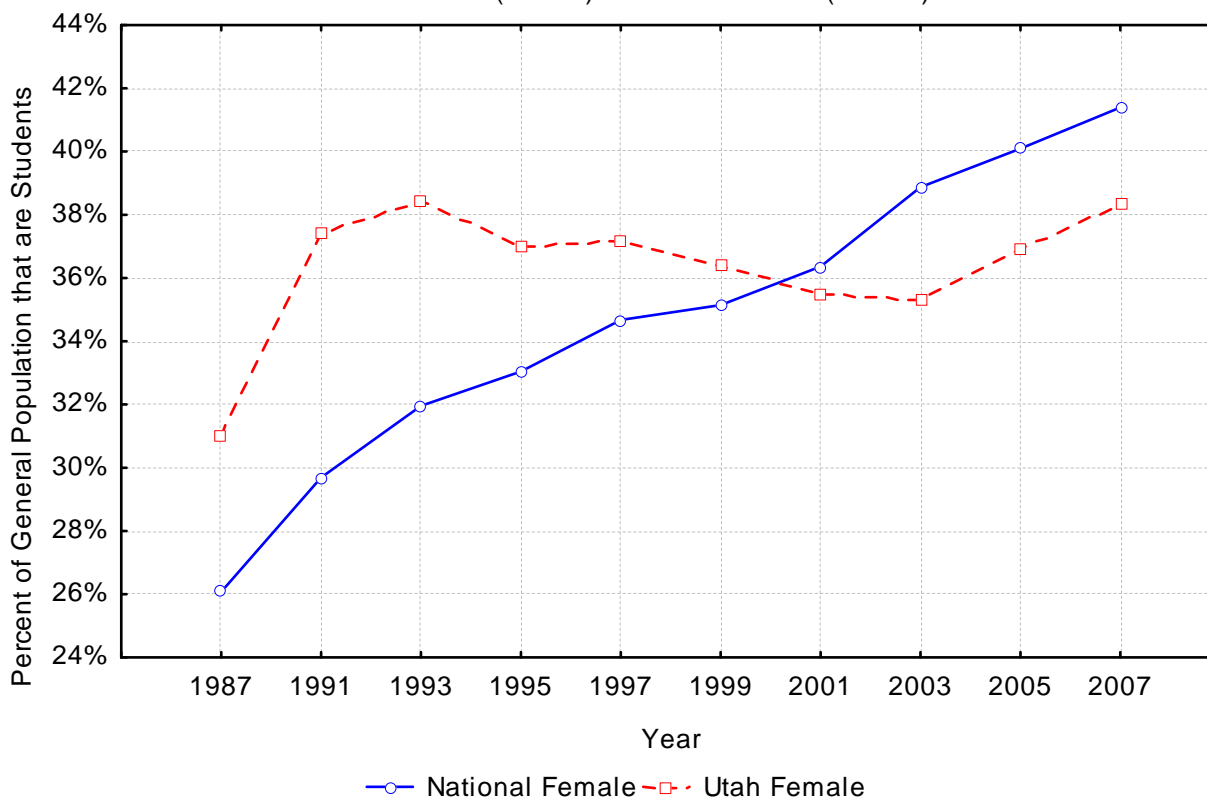


Figure 6.2: Percentage of 18-24 Year Old Males Enrolled in Postsecondary Institutions by Year
18-24 Students (IPEDS) / 18-24 Residents (Census)

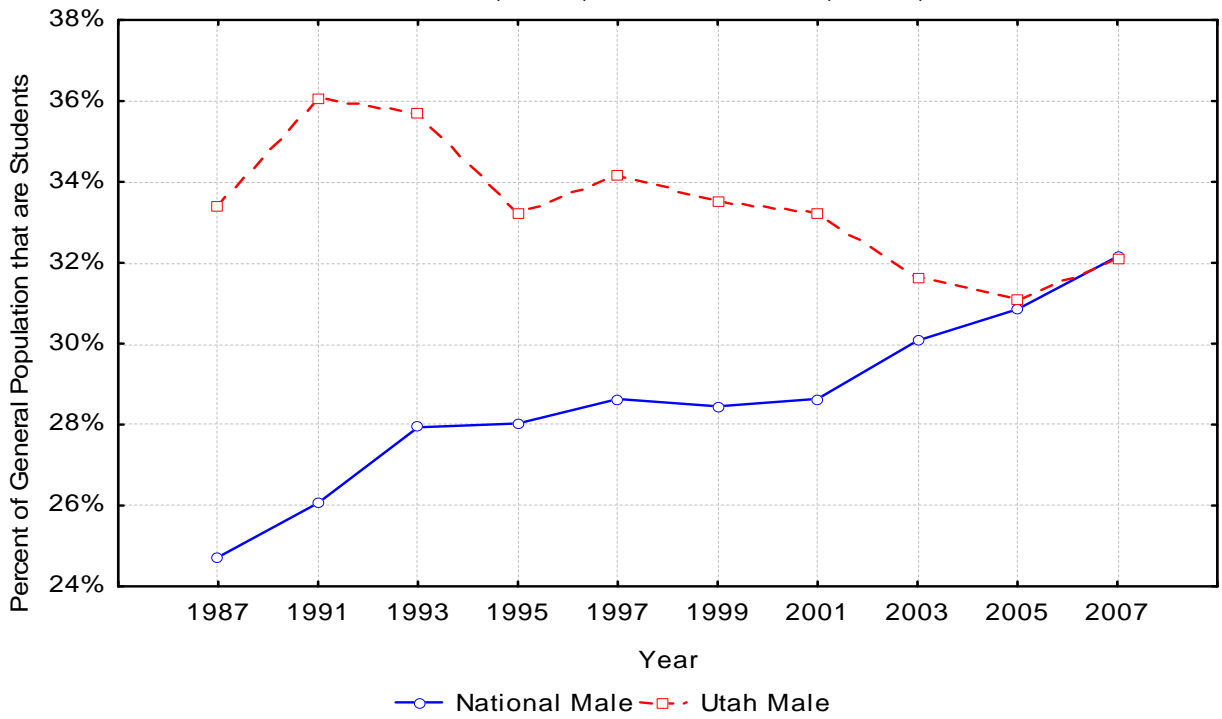


Figure 6.3: Percent Female Enrollment Benchmark Comparison. Utah Percent Enrollment Minus National Percent Enrollment (Difference) by Gender

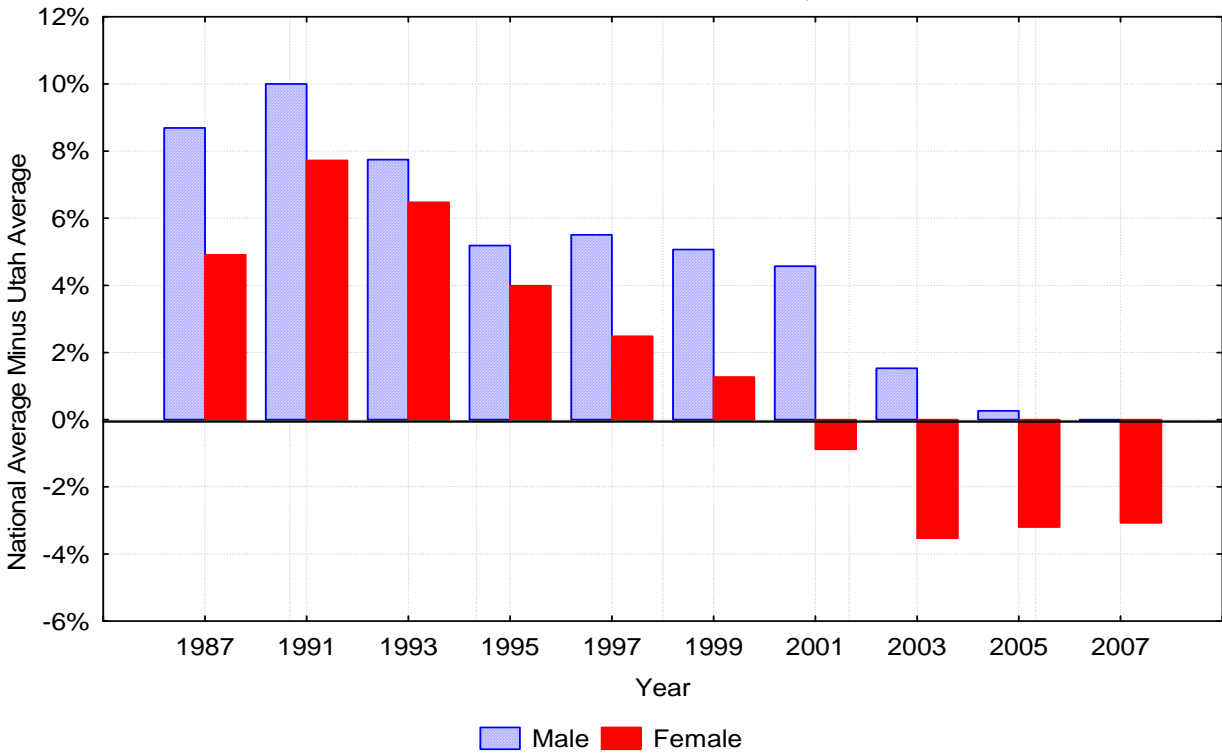


Figure 6.4: Percent 18-24 Female Enrollment by Year
1987-2007 (Odd Years), All Institutions

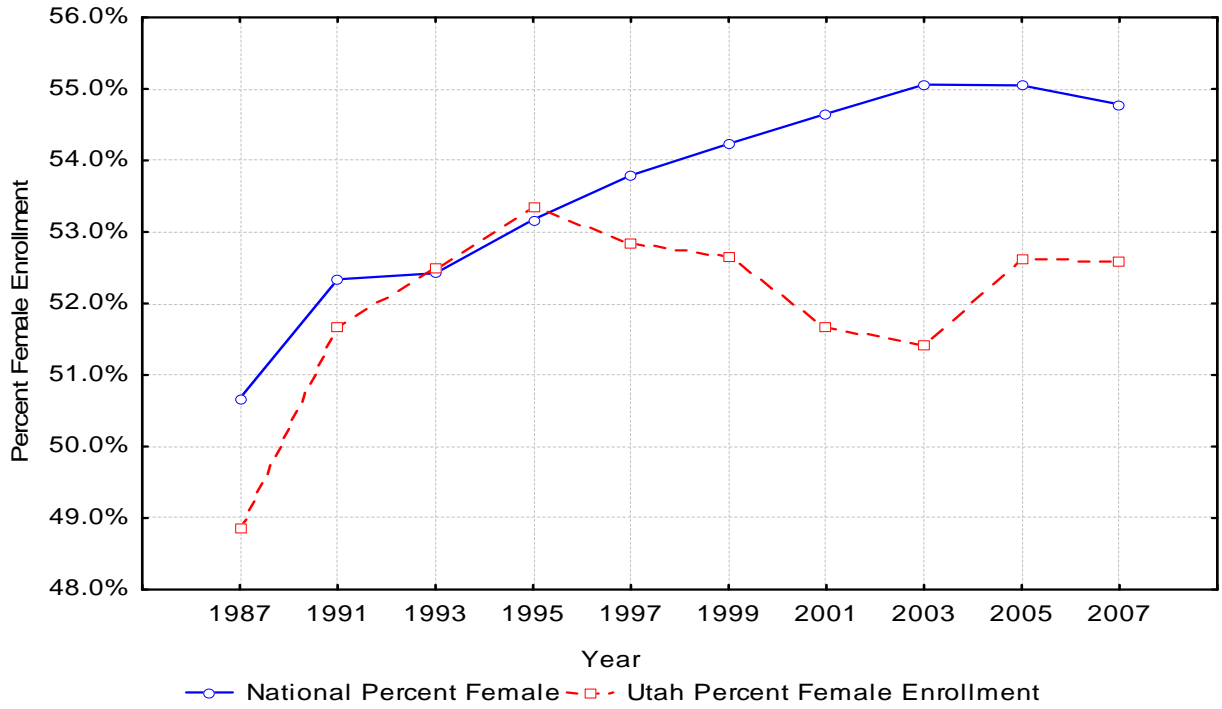
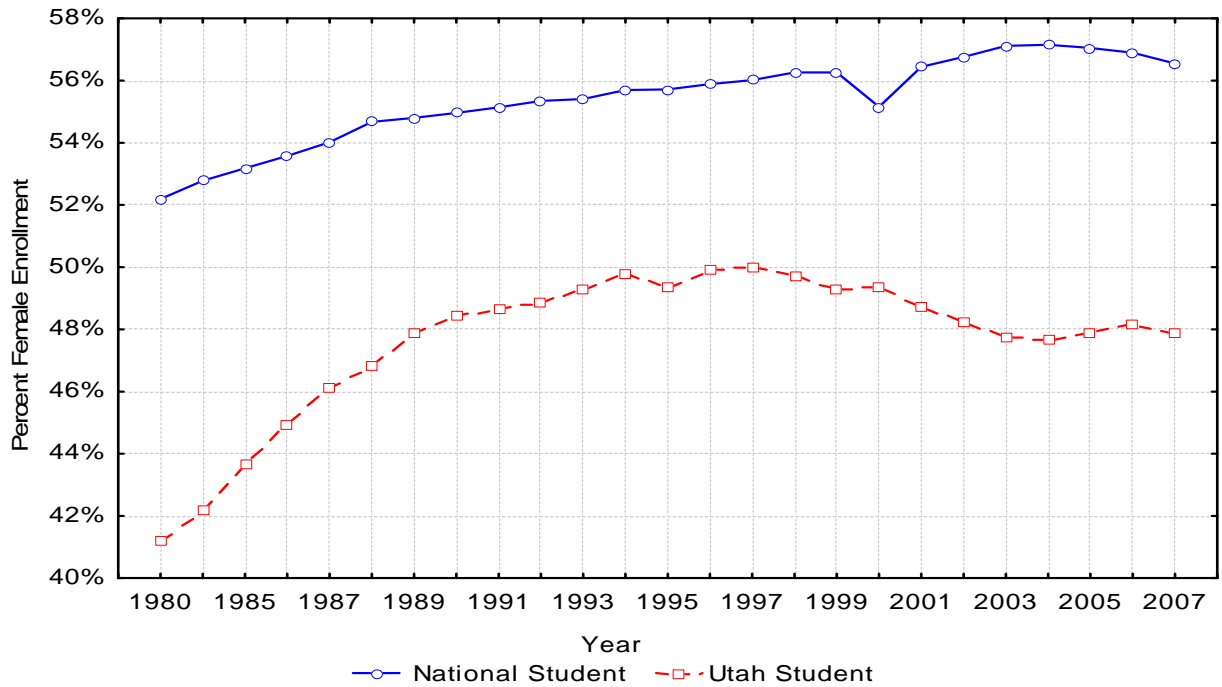


Figure 6.5: Percent Female Enrollment by Year
2007 IPEDS, Public Institutions



PART II: GRADUATION

Section 7: Graduation Data

Table 7.1: Female Graduation Rate by Degree Type						
	Associates	Bachelors	Masters	Doctorate	First Professional	Total
USHE	54.2%	47.4%	48.0%	40.0%	36.5%	49.7%
Utah Public	54.4%	47.4%	48.0%	40.0%	36.5%	49.7%
National Public	61.7%	56.9%	60.5%	47.6%	52.7%	58.6%
Utah All Postsecondary	56.1%	48.0%	44.5%	40.2%	37.3%	49.6%
National Postsecondary	61.3%	57.3%	60.5%	49.9%	49.7%	58.6%

Figure 7.1: Female Graduation Rate by Award Level and Institution Type

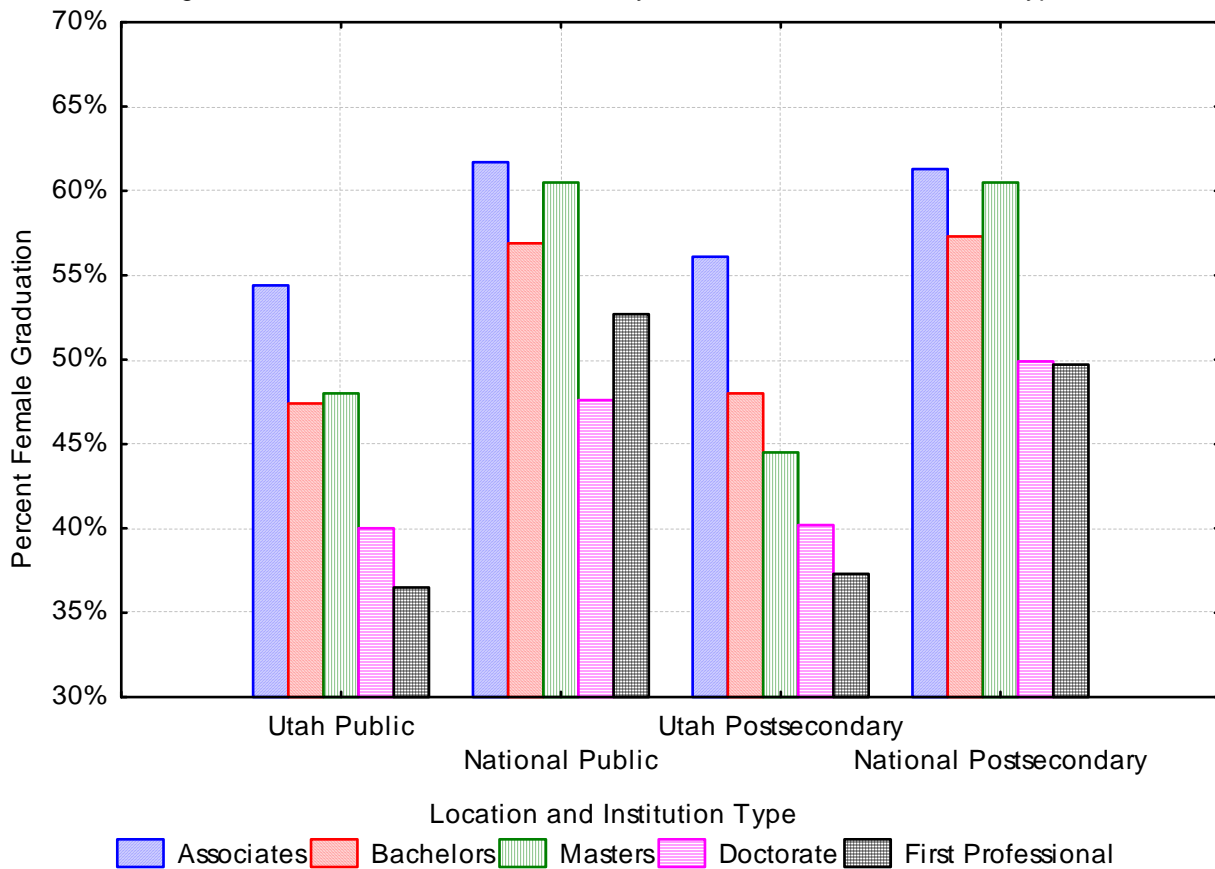


Table 7.2: Female Graduation Rate by Utah School Type					
Utah Category	Number of Institutions Used	Female Graduation Rate Mean	Female Graduation Rate Standard Error	Female Graduation Rate Lower 95% Boundary	Female Graduation Rate Upper 95% Boundary
USHE	9	57.60%	3.30%	51.00%	64.20%
Private Not-For-Profit	4	70.50%	4.70%	61.10%	79.90%
Private For-Profit	12	59.70%	5.40%	49.00%	70.40%
Technical	3	45.80%	17.10%	11.70%	79.90%
Cosmetology	14	96.00%	1.40%	93.20%	98.80%

Figure 7.2: Percent of Females Graduating from Postsecondary Institutions

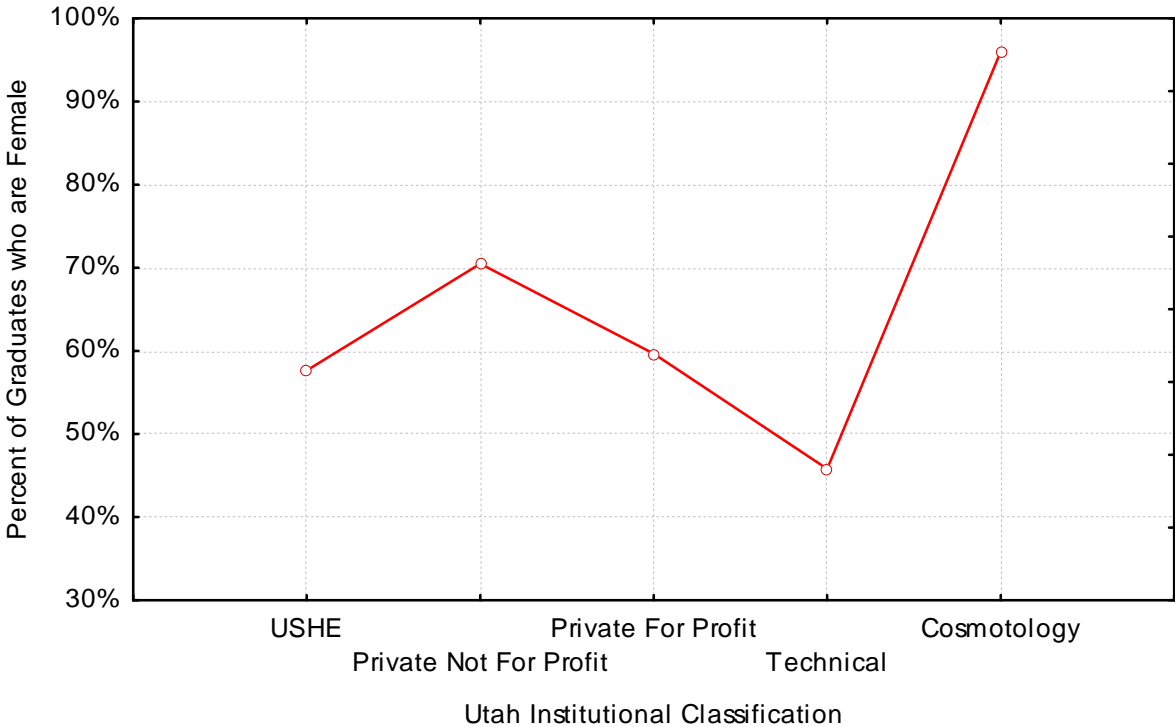
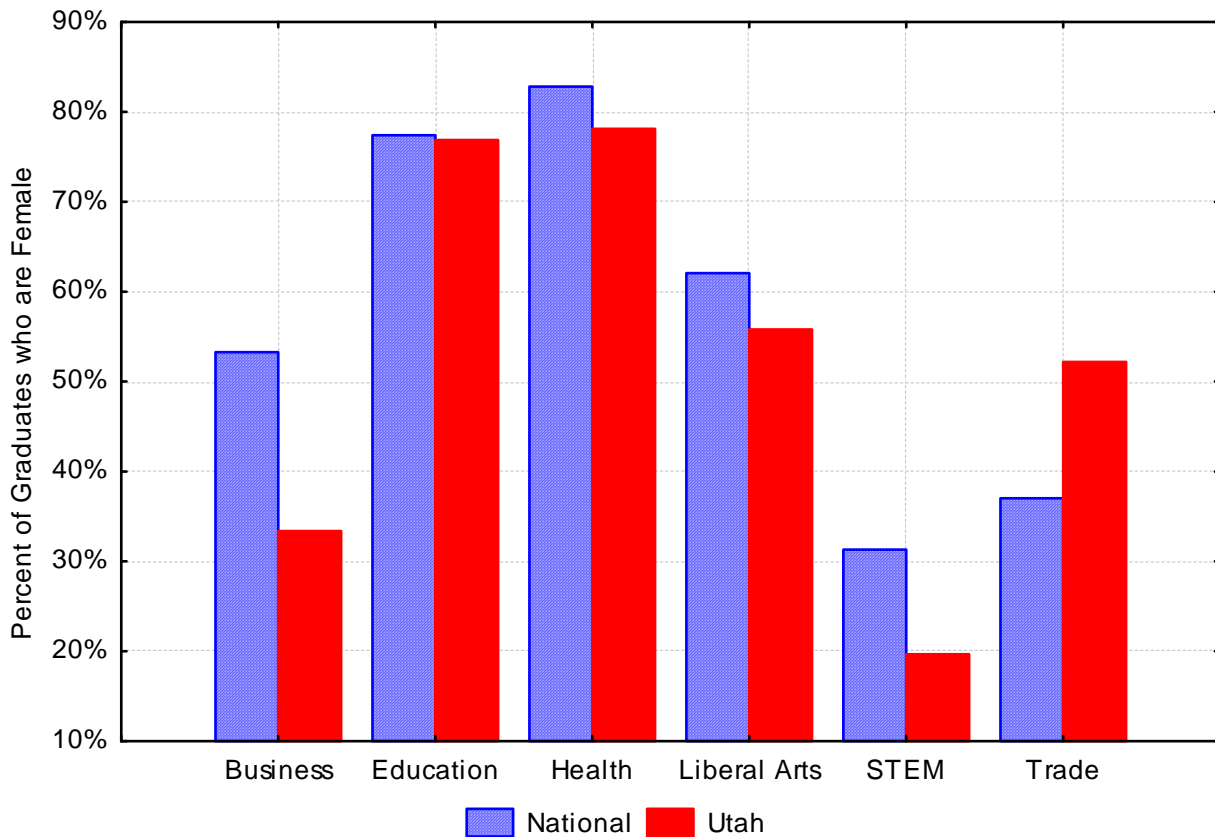


Table 7.3: Percent of Graduates that are Female by Degree Type			
	Percent Utah Female Enrollment	Percent National Female Enrollment	Difference
Business	33.4%	53.3%	-19.9%
Education	76.9%	77.4%	-0.6%
Health	78.1%	82.8%	-4.7%
Liberal Arts	55.8%	62.1%	-6.3%
STEM	19.7%	31.3%	-11.6%
Trade	52.2%	37.0%	15.2%
All Groups	53.4%	59.4%	-6.0%

Figure 7.3: Percent of Graduates who are Female by Degree Type
Graduated in 2006-2007 Academic Year, All Institutions



*See following table for list of degrees and their respective degree type.

Table 7.4: Percent Female Graduation by Degree

Degree	Degree Category	Percent Female Graduation
Agriculture, agriculture operations, and related sciences	Liberal Arts	44.9%
Architecture and related services	Liberal Arts	45.0%
Area: ethnic, cultural, and gender studies	Liberal Arts	68.0%
Biological and biomedical sciences	STEM	59.4%
Business management, marketing, and related support services	Business	52.7%
Communication, journalism, and related programs	Liberal Arts	64.0%
Communications technologies/technicians and support services	Liberal Arts	32.6%
Computer and information sciences and support services	STEM	25.1%
Construction trades	Trade	4.9%
Education	Education	77.4%
Engineering technologies/technicians	STEM	13.6%
Engineering	STEM	19.6%
English language and literature/letters	Liberal Arts	67.9%
Family and consumer sciences/human sciences	Liberal Arts	87.9%
Foreign languages, literatures, and linguistics	Liberal Arts	70.1%
Health professions and related clinical sciences	Health	82.8%
History	Liberal Arts	41.7%
Legal professions and studies	Business	58.5%
Liberal arts and sciences, general studies and humanities	Liberal Arts	63.0%
Mathematics and statistics	STEM	42.1%
Mechanic and repair technologies/technicians	Trade	4.7%
Multi/interdisciplinary studies	Liberal Arts	65.4%
Natural resources and conservation	Liberal Arts	41.9%
Parks, recreation, leisure, and fitness studies	Liberal Arts	48.0%
Personal and culinary services	Trade	81.4%
Philosophy and religious studies	Liberal Arts	37.9%
Physical sciences	STEM	39.3%
Precision production	Trade	6.2%
Psychology	Liberal Arts	77.7%
Public administration and social service professions	Liberal Arts	78.0%
Science technologies/technicians	Trade	45.2%
Security and protective services	Trade	41.1%
Social sciences	Liberal Arts	52.6%
Theology and religious vocations	Liberal Arts	34.9%
Transportation and materials moving	Trade	11.6%
Visual and performing arts	Liberal Arts	60.2%

Section 8: Utah Public and Private Not-For-Profit

Table 8.1: Graduation Numbers for Utah Public and Private Not-For-Profit						
Institution	Total Cohort	Total Male Cohort	Total Female Cohort	Total Cohort Graduates	Male Cohort Graduates	Female Cohort Graduates
College of Eastern Utah	445	163	282	154	45	109
Dixie State College of Utah	1158	478	680	353	88	265
Salt Lake Community College	1928	955	973	497	191	306
Snow College	1069	393	676	685	211	474
Southern Utah University	562	119	443	230	55	175
University of Utah	1877	839	1038	1051	446	605
Utah State University	1892	622	1270	849	279	570
Utah Valley University	1796	1002	794	352	163	189
Weber State University	1509	612	897	440	134	306
Brigham Young University	2992	788	2204	2330	639	1691
LDS Business College	311	128	183	154	54	100
Westminster College	315	116	199	171	63	108
Total	15854	6215	9639	7266	2368	4898
<i>Benchmark (National Public & Private-NFP)</i>	<i>1262661</i>	<i>570675</i>	<i>691986</i>	<i>719149</i>	<i>306180</i>	<i>412969</i>

Table 8.2: Graduation Percentages for Utah Public and Private Not-For-Profit				
Institution	Percent of Female Graduates	Percent of Adjusted* Cohort Graduates	Percent of Adjusted Male Cohort Graduates	Percent of Adjusted Female Cohort Graduates
College of Eastern Utah	70.8%	34.6%	27.6%	38.7%
Dixie State College of Utah	75.1%	30.5%	18.4%	39.0%
Salt Lake Community College	61.6%	25.8%	20.0%	31.4%
Snow College	69.2%	64.1%	53.7%	70.1%
Southern Utah University	76.1%	40.9%	46.2%	39.5%
University of Utah	57.6%	56.0%	53.2%	58.3%
Utah State University	67.1%	44.9%	44.9%	44.9%
Utah Valley University	53.7%	19.6%	16.3%	23.8%
Weber State University	69.5%	29.2%	21.9%	34.1%
Brigham Young University	72.6%	77.9%	81.1%	76.7%
Latter Day Saints Business College	64.9%	49.5%	42.2%	54.6%
Westminster College	63.2%	54.3%	54.3%	54.3%
Total	67.4%	45.8%	38.1%	50.8%
<i>Benchmark (National Public & Priv-NFP)</i>	<i>57.4%</i>	<i>57.0%</i>	<i>53.7%</i>	<i>59.7%</i>
Difference	10.0%	-11.1%	-15.6%	-8.9%

*Adjusted cohorts take into consideration military leave, church missions, and deaths.

PART III: APPENDICES

Appendix A: Classification of Utah Institutions

Note: Some institutions are listed in two categories, as appropriate.

USHE Institutions

College of Eastern Utah (CEU)

Dixie State College (DSC)

Salt Lake Community College (SLCC)

Snow College (SC)

Southern Utah University (SUU)

University of Utah (U)

Utah State University (USU)

Utah Valley University (UVU)

Weber State University (WSU)

*USU-Cont. Ed. is included in USHE totals but is not included in individual institution reports.

Public Institutions

Bridgerland Applied Technology College

College of Eastern Utah (CEU)

Dixie State College (DSC)

Mountainland Applied Technology College¹

Ogden-Weber Applied Technology Center

Salt Lake Community College (SLCC)

Snow College (SC)

Southern Utah University (SUU)

Southwest Applied Technology Center²

Uintah Basin Applied Technology Center

University of Utah (U)

Utah State University (USU)

Utah State University – Continuing Education³

Utah Valley University (UVU)

Weber State University (WSU)

Private Not- For-Profit

Brigham Young University (BYU)

Latter-Day Saint Business College (LDSBC)

Westminster College (WC)

¹ Began reporting as a public institution in 2006

² Began reporting as a public institution in 2007

³ Began reporting as a public institution in 2003

Private For-Profit Institutions

AmeriTech College
Careers Unlimited
DeVry University-Utah
Eagle Gate College-Layton
Eagle Gate College-Murray
Eagle Gate College-Salt Lake City
Everest College-West Valley City
Neumont University
Provo College
Stevens-Henager College
Stevens-Henager College-Logan
Stevens-Henager College of Business-Provo
Stevens-Henager College-Ogden
The Art Institute of Salt Lake City
University of Phoenix-Utah Campus
Utah Career College
Utah Career College-Layton
Western Governors University

Technical Institutions (Private For-Profit and Public)

Ameritech College
Bridgerland Applied Technology College
Certified Careers Institute
Certified Careers Institute-Layton
ITT Technical Institute-Murray
Mountainland Applied Technology College
Ogden-Weber Applied Technology Center
Southwest Applied Technology Center
Uintah Basin Applied Technology College

Cosmetology

Bon Losee Academy of Hair Artistry
Cameo College of Essential Beauty
Echlon Edge Academy of Hair, Skin, and Nails
Evans Hairstyling College
Evans Hairstyling College
Fran Brown College of Beauty
Hairitage Hair Academy
Healing Mountain Massage School
ImageWorks Academy of Hair Design
Maximum Style Tec School of Cosmetology
Myotherapy College of Utah
Ogden Institute of Massage Therapy
Paul Mitchell the School-Provo
Paul Mitchell the School-Salt Lake City

Premier Hair Academy
Renaissance School of Therapeutic Massage
Sherman Kendalls Academy of Beauty Arts & Sciences
Sherman Kendall's Academy Beauty Arts & Sciences-Sugarhouse
Skinworks School of Advanced Skincare
Staceys Hands of Champions
Utah College of Massage Therapy Inc
Utah College of Massage Therapy Inc-Utah Valley

Appendix B: Population Counts

Table B.1: Population Counts for 18 to 24 Year Olds (All Institutions)								
Year	National Male	National Female	Utah Male	Utah Female	National Student Male	National Student Female	Utah Student Male 18-24	Utah Student Female 18-24
2007	15193533	14298882	170121	158105	5822233	8053621	54633	60590
2006	15110196	14202754	169583	157813				
2005	15036029	14169528	172036	161227	5614745	7805984	53535	59486
2004	14979408	14151177	174755	164265				
2003	14785308	14015723	175702	166224	5501535	7487950	55532	58747
2002	14601234	13818627	171732	167493				
2001	14347863	13618085	165262	165435	5091393	6654359	54888	58714
2000	13977035	13335458	157737	162265				
1999	13275767	12735682	148754	152230	4719386	6042783	49859	55431
1998	12994626	12481575	143283	147080				
1997	12737143	12242893	136750	140729	4781860	6052410	46683	52296
1996	12662112	12180498	131027	134686				
1995	12792620	12319693	125003	128171	4817683	6000470	41518	47469
1994	12930746	12466030	117565	120485				
1993	13111245	12628680	111078	113923	4871191	5973648	39635	43786
1992	13239574	12736468	106099	108914				
1991	13417656	12934607	102344	105429	4542450	5639053	36904	39440
1990	13679388	13155456	99751	102421				
1989	13846373	13382414	96429	99034				
1988	13913016	13504687	93782	96419				
1987	14071096	13706597	93135	95969	4442343	5074746	31120	29739
1986	14343528	14016408	95278	98102				
1985	14648864	14366417	97335	100359				
1984	14914016	14662330	98086	101786				
1983	15099076	14894431	99665	104102				
1982	15177463	15014208	102098	107479				
1981	15164633	15029852	103756	109519				
1980	15053675	14968532	104996	110985				

**Appendix B.2: Census Population Counts (18 to 24 Year Olds)
and Those Attending Public Institutions (All Ages)**

	National Male	National Female	Utah Male	Utah Female	National Student Male	National Student Female	Utah Student Male	Utah Student Female
2007	15193533	14298882	170121	158105	5930450	7719707	67012	61547
2006	15110196	14202754	169583	157813	5748385	7587628	67378	62600
2005	15036029	14169528	172036	161227	5657662	7516024	69177	63587
2004	14979408	14151177	174755	164265	5622575	7499960	69584	63335
2003	14785308	14015723	175702	166224	5572155	7422418	68276	62411
2002	14601234	13818627	171732	167493	5584185	7330181	70328	65450
2001	14347863	13618085	165262	165435	5385983	6978964	68571	65219
2000	13977035	13335458	157737	162265	5475926	6735115	62319	60727
1999	13275767	12735682	148754	152230	4977234	6401866	60958	59250
1998	12994626	12481575	143283	147080	4934802	6348205	56013	55302
1997	12737143	12242893	136750	140729	4966714	6325082	59351	59268
1996	12662112	12180498	131027	134686	4951813	6273543	56949	56747
1995	12792620	12319693	125003	128171	4966727	6248859	55665	54321
1994	12930746	12466030	117565	120485	4988311	6270848	54523	54070
1993	13111245	12628680	111078	113923	5054830	6281944	50831	49440
1992	13239574	12736468	106099	108914	5131427	6360418	49572	47386
1991	13417656	12934607	102344	105429	5110007	6281493	48697	46105
1990	13679388	13155456	99751	102421	4935813	6023074	44390	41718
1989	13846373	13382414	96429	99034	4788643	5806595	41484	38139
1988	13913016	13504687	93782	96419	4603176	5551942	39595	34837
1987	14071096	13706597	93135	95969	4613621	5419995	40124	34329
1986	14343528	14016408	95278	98102	4487445	5178775	40252	32815
1985	14648864	14366417	97335	100359	4328244	4916362	39099	30327
1984	14914016	14662330	98086	101786	4358032	4871142	38877	28338
1983*	15099076	14894431	99665	104102				
1982	15177463	15014208	102098	107479				
1981	15164633	15029852	103756	109519				
1980	15053675	14968532	104996	110985	4370609	4771933	35058	24540

*No IPEDS data exists for 1981 through 1983.