

# IPEDS ENROLLMENT AND GRADUATION REPORT

## *2008 Data*

---

**April 21, 2010**  
UWEP 2010-203



*Office of the Utah Women & Education Project  
Utah Valley University*

## Acknowledgements

Funding for this report came from a Carl D. Perkins Leadership Grant (2009-2010) through the Utah State Office of Education and Utah Valley University. Support was also provided by the Utah System of Higher Education (USHE). The raw data used in this report was mined from the Integrated Postsecondary Education Data System (IPEDS) and was analyzed by A. David King and Dr. Susan R. Madsen. Additional feedback and insights were provided by the following individuals: Joseph Curtin, Cheryl Hanewicz, and Susan Thackeray.

A. David King, B.S.  
M.Stat. Graduate Student in Econometrics  
University of Utah  
dking@utahsbr.edu

Susan R. Madsen, Ed.D.  
Director of the Utah Women & Education Project  
Utah Valley University  
madsensu@uvu.edu

Copyright © 2010 by the Office of the Utah Women and Education Project (UWEP) at Utah Valley University. All rights reserved. Printed in the United States of America. This publication, or parts thereof, may not be reproduced in any form without permission of UWEP.

Utah Women and Education Project  
Utah Valley University  
Dr. Susan R. Madsen, Director  
800 West University Parkway, MS 119  
Orem, Utah 84058  
madsensu@uvu.edu  
801.863.6888

# Table of Contents

## INTRODUCTION

Acknowledgments	1
Table of Contents	2
List of Tables and Figures	3
Background Information (including report acronyms)	4

## PART I: ENROLLMENT

Section 1	Utah Public vs. National Public Institutions	6
Section 2	USHE, Private Not-For-Profit, and Combined	11
Section 3	Institutional Breakdown: USHE and Private Not-For-Profit	12
Section 4	Utah Categories	14
Section 5	Enrollment for All Types of Utah Institutions	15
Section 6	Longitudinal Data	17

## PART II: GRADUATION

Section 7	Completion Data	20
Section 8	Utah Public and Private Not-For-Profit	24

## PART III: APPENDICES

Appendix A	Gender Percentages in General and Student Populations	26
Appendix B	Classification of Utah Institutions	28
Appendix C	Population Counts	31

## List of Tables and Figures

### TABLES

Table 1.1	Female Enrollment Percentage	6
Table 2.1	Female Enrollment Percentage by School Control	11
Table 3.1	Individual Utah School Breakdown of Enrollment Variables	12,13
Table 4.1	Utah Students by Type of Institution Attending	14
Table 5.1	Individual School Enrollment Totals	15,16
Table 6.1	Percentage of 18–24-Year-Olds Attending Postsecondary Institutions	17
Table 7.1	Female Graduation Percentage by Award Level	20
Table 7.2	Female Graduation Percentage by Utah Institution Type	21
Table 7.3	Percentage of Graduates Who Are Female by Degree Type	22
Table 7.4	Percentage of Graduates Who Are Female by Degree in Utah	23
Table 8.1	Graduation Numbers for Utah Public and Private Not-For-Profit	24
Table 8.2	Graduation Percentages for Utah Public and Private Not-For-Profit	25
Table A.1	Gender Percentages in General and Student Populations	26
Table C.1	Census Population Counts for 18–24-Year-Olds (All Institutions)	31

### FIGURES

Figure 1.1	Female Enrollment by State	7
Figure 1.2	First Time Female Enrollment by State	7
Figure 1.3	Female Enrollment by Degree Level	8
Figure 1.4	Female Enrollment by Student Status	8
Figure 1.5	Female Enrollment by Race	9
Figure 1.6	Female Enrollment by Degree Type	9
Figure 1.7	Female Enrollment by Age	10
Figure 4.1	Institution Type of Females Who Are Attending in Utah	14
Figure 6.1	Percentage of 18–24-Year-Old Females Enrolled in Postsecondary Institutions by Year	17
Figure 6.2	Percentage of 18–24-Year-Old Males Enrolled in Postsecondary Institutions by Year	18
Figure 6.3	Percentage of Female Enrollment: Benchmark Comparison by Year	18
Figure 6.4	Percentage of 18–24-Year-Old Female Enrollment by Year	19
Figure 6.5	Percentage of Female Enrollment by Year	19
Figure 7.1	Female Graduation Percentage by Award Level	20
Figure 7.2	Percentage of Females Graduating from Postsecondary Institutions	21
Figure 7.3	Percentage of Graduates Who Are Female by Degree Type	22
Figure A.1	Longitudinal Look at Resident and Student Populations	27
Figure A.2	Difference Between Female Population and Student Enrollment Percentages	27

## Background Information

The raw data from this report was downloaded from the National Center of Educational Statistics (NCES) Integrated Postsecondary Education Data System (IPEDS). The initial download included 6894 institutions. Utah had 67 postsecondary institutions listed during the 2008 year. Only variables where at least 30 institutions reported data were used. Percentages are given only if there are at least 30 students for any given cohort.

This report deals specifically with enrollment and graduation percentages of females. There are two methods of looking at female enrollment. The first addresses the percentage of enrolled students who are female. For example, if there are 100 students in an institution and 55 of them are female, the percentage of enrollment who are female will be 55%. All graphs looking at this have the axis title “Female Enrollment Percentage.” The second method titled “Percentage of General Population Who Are Students” addresses the percentage of the state and nation’s 18–24 population who are female and going to a public or postsecondary institution. For example, if there are 1,000 females 18-24 years old living in the state and 400 of them are enrolled in a postsecondary institution, the “Percentage of General Population Who Are Students” will be 40%.

Feedback from previous reports suggested the need to address male-female population ratios. The focus of much of this report looks at the ratio of females to males enrolled in and graduating from postsecondary institutions. Nationally among 18–24 year olds, 48.5% are female. Utah closely mirrors the national average at 48.2%. This difference of 0.3% is negligible in the overwhelming disparity between Utah and National averages. Please see Appendix A for a historical look at male-female population ratios.

IPEDS collects age-specific enrollment numbers during odd-numbered years. For this reason, longitudinal tracking figures are reported every odd year. Therefore, some figures from the 2007 report could not be updated for this 2008 report.

### REPORT ACRONYMS

IPEDS	Integrated Postsecondary Education Data System
STEM	Science, Technology, Engineering, and Mathematics
USHE	Utah System of Higher Education
NCES	National Center for Education Statistics

In the state of Utah there is some disparity between “Public Institutions” and the Utah System of Higher Education (USHE) institutions (see Appendix B for lists of institutions within the various report categories). We cannot do national comparisons directly with our USHE institutions. National comparisons reported in this document use Utah “Public Institutions” rather than exclusively USHE institutions (see next page for more details).

<b>Public Institutions</b>	<b>USHE Institution</b>
Bridgerland Applied Technology College (BATC)	No
College of Eastern Utah (CEU)	Yes
Dixie State College (DSC)	Yes
Dixie Applied Technology College (DXATC)	No
Mountainland Applied Technology College (MATC)	No
Ogden–Weber Applied Technology Center (OWATC)	No
Salt Lake Community College (SLCC)	Yes
Snow College (SC)	Yes
Southern Utah University (SUU)	Yes
Southwest Applied Technology Center (SWATC)	No
Uintah Basin Applied Technology Center (UBATC)	No
University of Utah (U)	Yes
Utah State University (USU)	Yes
Utah State University–Continuing Education (USU-CE)	Yes
Utah Valley University (UVU)	Yes
Weber State University (WSU)	Yes

## PART I: ENROLLMENT

### Section 1: Utah Public vs. National Public Institutions

Table 1.1: Female Enrollment Percentage				
Category (Enrollment Percentages)	USHE	Utah Public	National Public	Difference <sup>1</sup>
Grand Total	49.1%	49.0%	57.4%	<b>-8.4%</b>
Undergraduate Total	48.7%	49.0%	57.1%	<b>-8.1%</b>
First Time Undergraduate	51.4%	51.9%	54.9%	-3.0%
Graduate and First Professional	49.0%	49.0%	58.8%	<b>-9.8%</b>
Enrollment Status				
Full Time	47.7%	47.7%	55.8%	<b>-8.1%</b>
Part Time	50.6%	50.2%	59.8%	<b>-9.6%</b>
Race				
American Indian or Alaska Native	58.4%	57.8%	60.2%	-2.4%
Asian, Native Hawaiian, Pacific Islander	51.1%	50.8%	53.9%	-3.1%
Black or African American	41.9%	42.0%	64.9%	<b>-22.9%</b>
Hispanic	53.0%	52.6%	58.8%	<b>-6.2%</b>
White	48.8%	48.7%	56.3%	<b>-7.6%</b>
Nonresident Alien	50.1%	50.1%	46.6%	4.5%
Unknown Race	43.3%	43.3%	54.2%	<b>-10.9%</b>
Degree Type <sup>2</sup>				
Biological/Life Sciences	40.0%	40.0%	59.5%	<b>-19.5%</b>
Business Management and Admin.	28.8%	28.8%	49.5%	<b>-20.7%</b>
Education	74.6%	74.6%	75.8%	-1.2%
Engineering	12.1%	12.1%	18.7%	<b>-6.6%</b>
Law	41.4%	41.4%	47.1%	<b>-5.7%</b>
Mathematics	36.1%	36.1%	42.7%	<b>-6.6%</b>
Medicine	40.9%	40.9%	48.4%	<b>-7.5%</b>
Physical Science	30.8%	30.8%	40.1%	<b>-9.3%</b>
Age				
17 and under	44.6%	55.3%	58.4%	-3.1%
18–19	39.4%	60.4%	54.8%	<b>5.6%</b>
20–21	42.0%	57.9%	54.6%	3.3%
22–24	62.1%	38.0%	53.6%	<b>-15.6%</b>
25 and over	56.4%	43.6%	60.6%	<b>-17.0%</b>

*Note:* Shaded boxes (content bolded) are those categories that showed a 5% negative difference or more between Utah Public and National Public. Black boxes (content italicized) are those categories that showed a 5% positive difference or more between Utah Public and National Public.

<sup>1</sup> This column reports the difference between “Utah Public” to “National Public.”

<sup>2</sup> Degree type is reported by institutions offering at least a bachelor’s degree.

Figure 1.1: Female Enrollment by State  
 2008 Data, Public Institutions  
 Solid Green Bar Denotes Utah Average

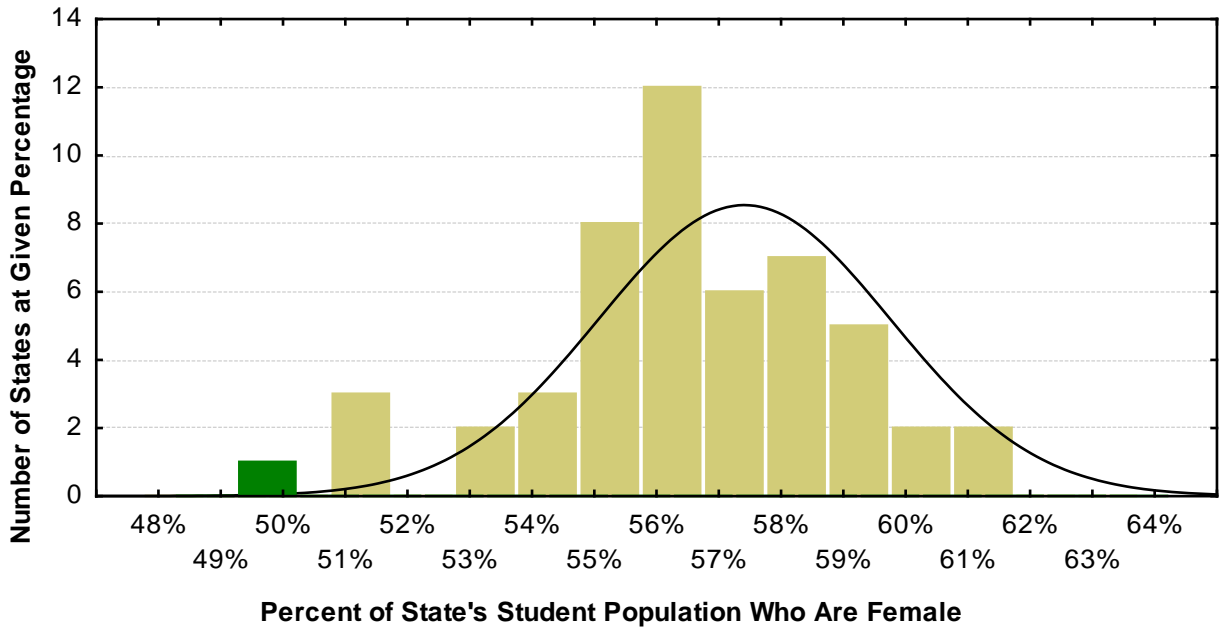


Figure 1.2: First Time Female Enrollment by State  
 2008 Data, Public Institutions  
 Solid Green Bar Denotes Utah Average

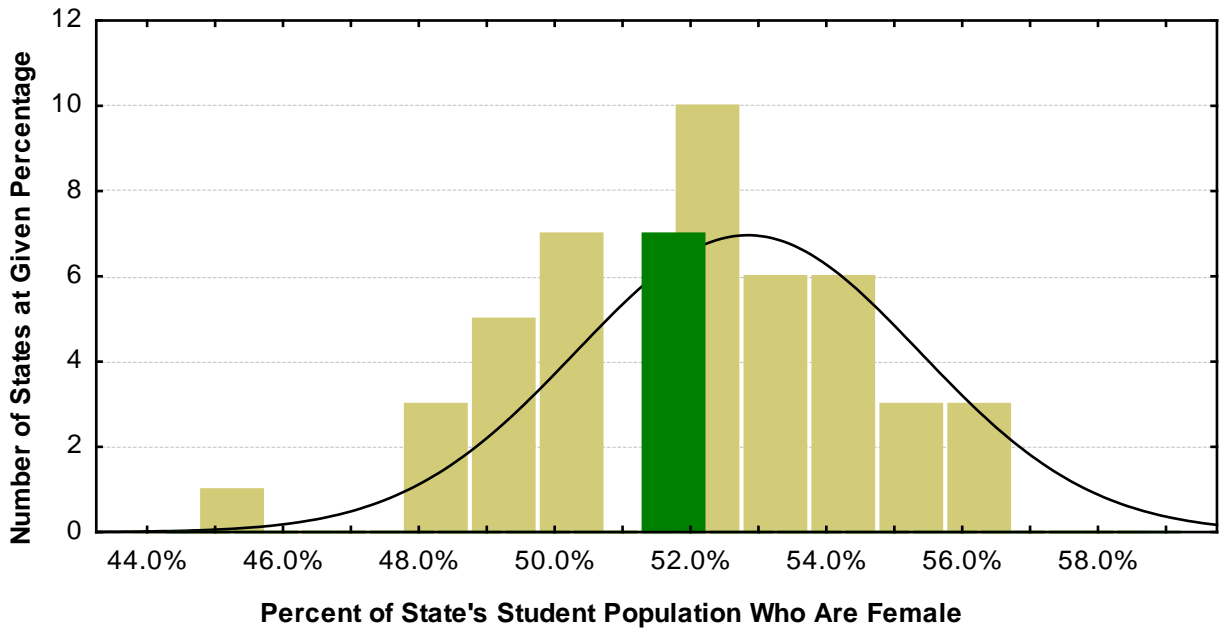




Figure 1.3: Female Enrollment by Degree Level  
2008 Data, Public Institutions

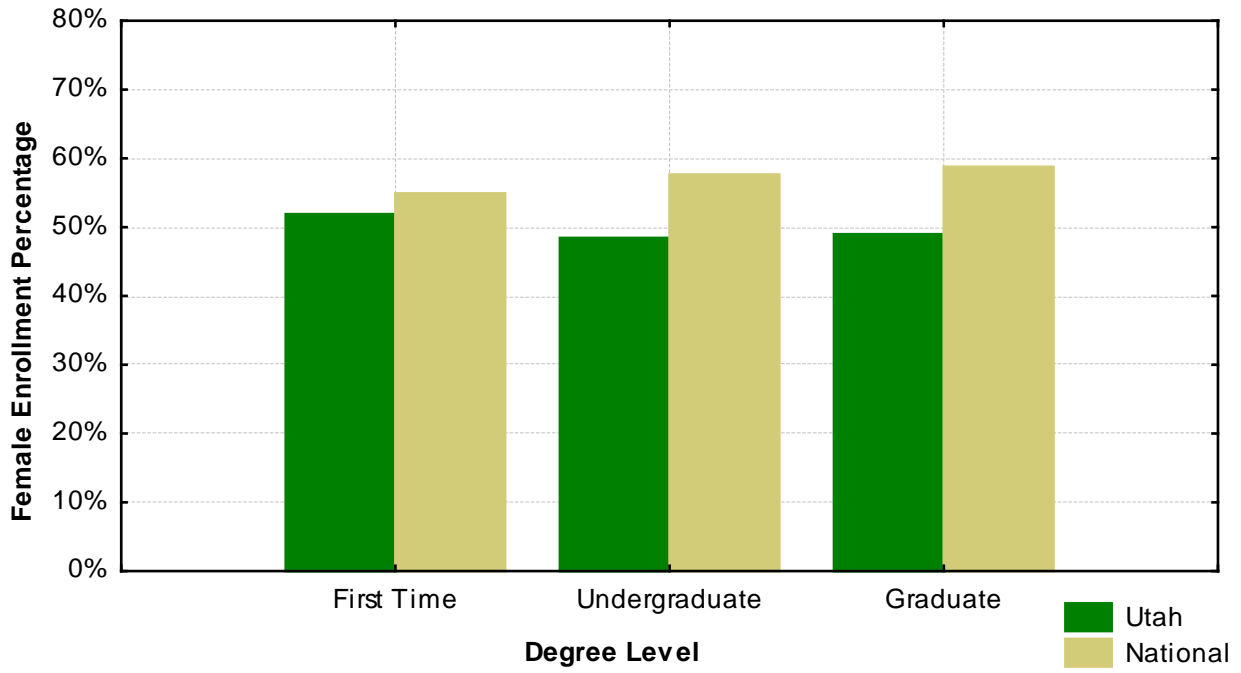


Figure 1.4: Female Enrollment by Student Status  
2008 Data, Public Institutions

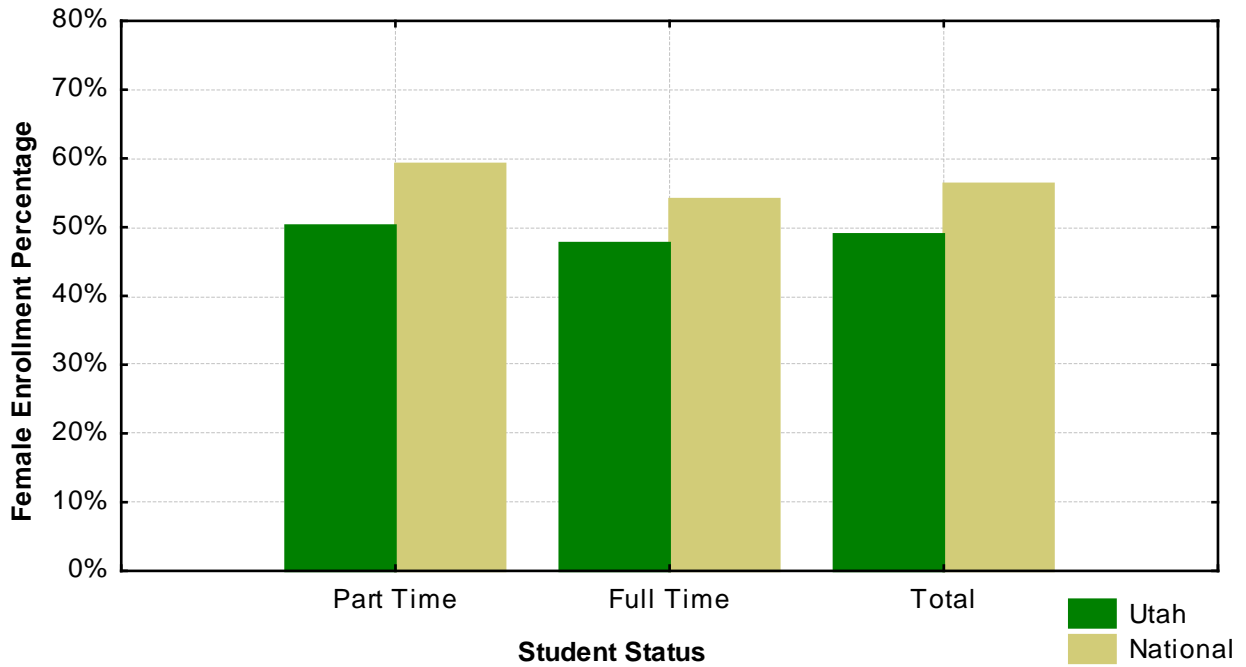


Figure 1.5: Female Enrollment by Race  
2008 Data, Public Institutions

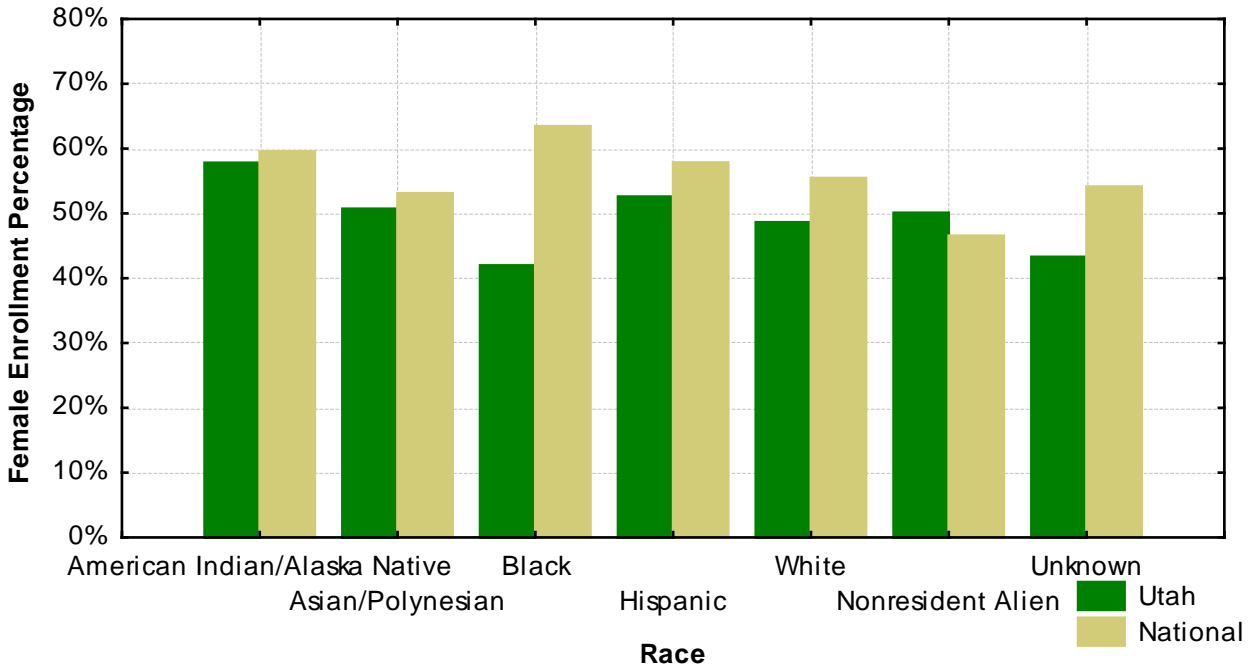


Figure 1.6: Female Enrollment by Degree Type  
2008 Data, Public Institutions

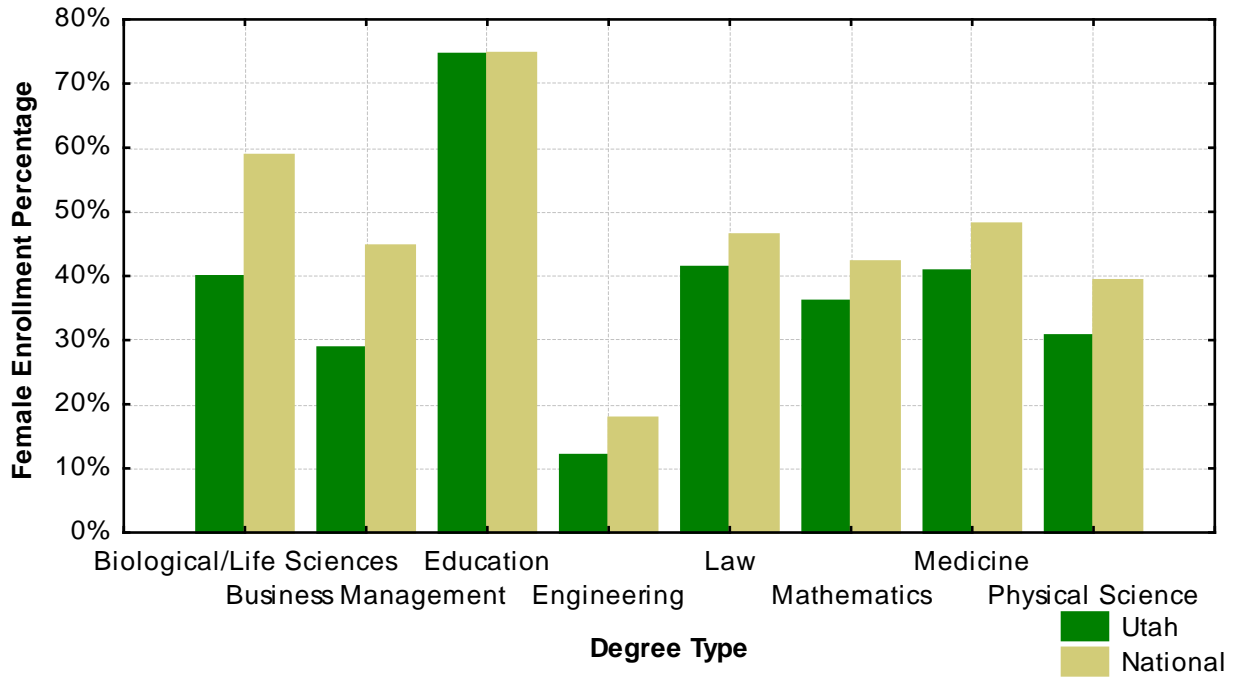
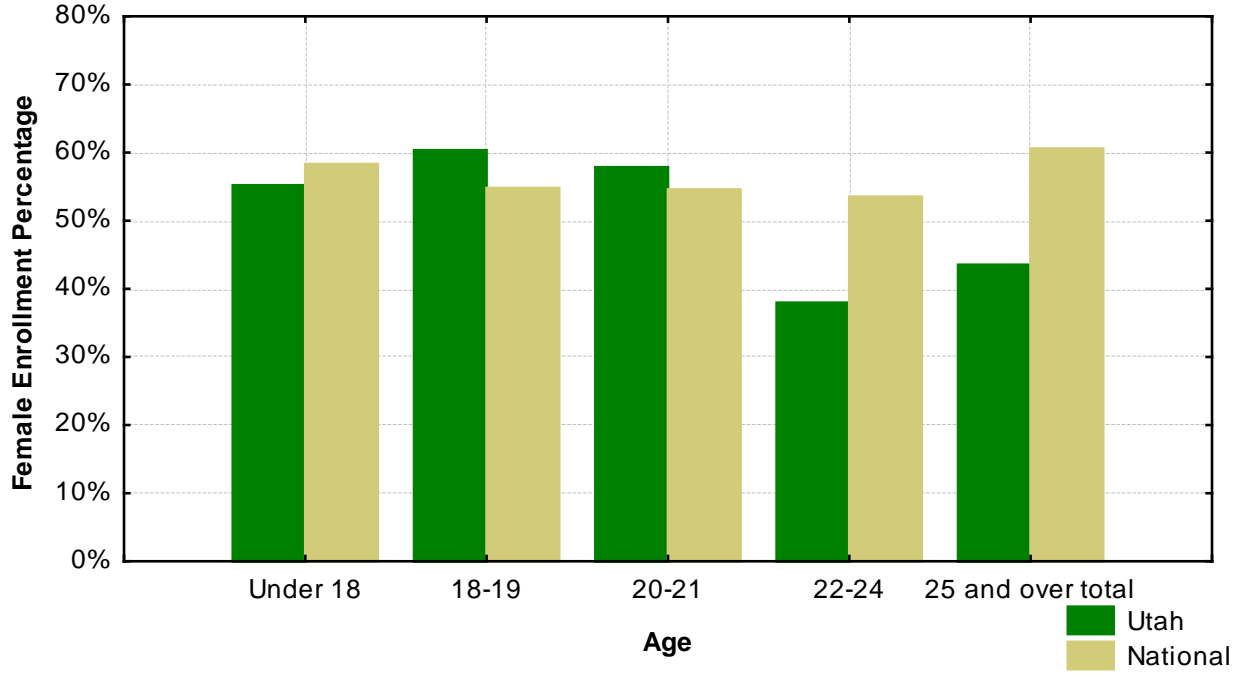


Figure 1.7: Female Enrollment by Age  
2008 Data, Public Institutions



## Section 2: USHE, Private Not-For-Profit, and Combined

Table 2.1: Female Enrollment Percentage by School Control				
Category	USHE	Private Not-For-Profit*	Combined	Difference**
Grand Total	49.1%	51.6%	49.6%	-2.5%
Undergraduate Total	48.7%	54.5%	52.5%	<b>-5.8%</b>
Undergraduate First Time	51.4%	51.0%	49.0%	0.4%
Graduate and First Professional	49.0%	52.3%	50.2%	-3.3%
Enrollment Status				
Full Time	47.7%	52.2%	49.3%	-4.5%
Part Time	50.6%	46.7%	50.0%	3.9%
Race				
American Indian or Alaska Native	58.4%	53.5%	57.1%	4.9%
Asian, Native Hawaiian, Pacific Islander	51.1%	49.4%	50.4%	1.7%
Black of African American	41.9%	63.7%	50.8%	<b>-21.8%</b>
Hispanic	53.0%	53.7%	52.8%	-0.7%
White	48.8%	50.9%	49.2%	-2.1%
Nonresident Alien	50.1%	56.7%	51.3%	<b>-6.6%</b>
Unknown Race	43.3%	48.9%	44.5%	<b>-5.6%</b>
Degree Type				
Biological/Life Sciences	40.0%	36.0%	77.7%	4.0%
Business Management and Admin	28.8%	33.0%	12.0%	-4.2%
Education	74.6%	80.9%	38.0%	<b>-6.3%</b>
Engineering	12.1%	11.7%	38.1%	0.4%
Law	41.4%	35.0%	37.1%	<b>6.4%</b>
Mathematics	36.1%	39.0%	30.1%	-2.9%
Medicine	40.9%	N/A	40.9%	N/A
Physical Science	30.8%	28.4%	30.5%	2.4%
Age				
17 and under	44.6%	48.6%	55.3%	-4.0%
18–19	39.4%	54.9%	62.8%	<b>-15.5%</b>
20–21	42.0%	69.6%	61.5%	<b>-27.6%</b>
22–24	62.1%	28.5%	35.3%	<b>33.6%</b>
25 and over	56.4%	31.2%	42.0%	<b>25.2%</b>

\*Private Not-For-Profit includes four institutions: BYU, LDS Business College, Westminster, and Western Governors University.

\*\*This column reports the difference between USHE and Private Not-For-Profit.

*Note:* Shaded boxes (content bolded) are those categories that showed a 5% negative difference or more between USHE and Private Not-For-Profit. Black boxes (content italicized) are those categories that showed a 5% positive difference or more between USHE and Private Not-For-Profit.

### Section 3: Institutional Breakdown: USHE and Private Not-For-Profit

Table 3.1: Individual Utah School Breakdown of Enrollment Variables						
Category	BYU	CEU	DSC	LDSBC	SC	SLCC
Grand Total	48.2%	58.0%	51.5%	50.5%	51.9%	49.7%
Undergraduate Total	49.2%	58.0%	51.5%	50.5%	51.9%	49.7%
Undergraduate First Time	54.8%	53.3%	49.9%	57.5%	55.0%	48.1%
Graduate and First Professional	38.1%	N/A	N/A	N/A	N/A	N/A
Enrollment Status						
Full Time	48.4%	56.4%	49.3%	48.0%	53.6%	48.0%
Part Time	46.4%	63.2%	54.5%	57.6%	49.4%	50.4%
Race						
American Indian or Alaska Native	42.2%	80.3%	65.4%	N/A	57.6%	53.8%
Asian, Native Hawaiian, Pacific Islander	48.0%	56.4%	41.1%	N/A	29.2%	54.8%
Black of African American	52.3%	N/A	40.4%	N/A	N/A	40.1%
Hispanic	49.4%	50.8%	52.0%	57.8%	44.7%	52.5%
White	47.9%	55.2%	51.7%	51.6%	53.1%	49.4%
Nonresident Alien	49.9%	N/A	N/A	42.6%	44.7%	47.1%
Unknown Race	53.3%	47.9%	N/A	N/A	N/A	47.6%
Degree Type						
Biological/Life Sciences	35.4%	N/A	42.3%	N/A	N/A	N/A
Business Management and Admin	21.7%	N/A	32.9%	N/A	N/A	N/A
Education	85.4%	N/A	81.1%	N/A	N/A	N/A
Engineering	11.7%	N/A	6.1%	N/A	N/A	N/A
Law	35.0%	N/A	N/A	N/A	N/A	N/A
Mathematics	37.3%	N/A	N/A	N/A	N/A	N/A
Medicine	N/A	N/A	N/A	N/A	N/A	N/A
Physical Science	N/A	N/A	N/A	N/A	N/A	N/A
Age						
17 and under	54.3%	N/A	53.1%	N/A	51.6%	58.7%
18–19	70.3%	N/A	58.6%	77.3%	62.8%	55.1%
20–21	72.2%	N/A	57.4%	79.8%	46.8%	52.5%
22–24	27.9%	N/A	34.6%	26.0%	21.3%	38.9%
25 and over	27.7%	N/A	50.5%	46.5%	46.3%	47.8%

\*N/A means that there are not enough respondents to provide valuable percentages.

Black boxes: Strength of institution (relative to self).

Gray boxes: Weakness of institution (relative to self).

<b>Table 3.1 (cont.): Individual Utah School Breakdown of Enrollment Variables</b>							
<b>Category</b>	<b>SUU</b>	<b>U</b>	<b>USU</b>	<b>UVU</b>	<b>WC</b>	<b>WGU</b>	<b>WSU</b>
Grand Total	57.8%	44.5%	48.2%	43.3%	52.3%	61.7%	51.6%
Undergraduate Total	58.0%	44.7%	49.2%	43.2%	55.6%	59.0%	51.8%
Undergraduate First Time	61.3%	48.9%	56.0%	48.3%	54.8%	<b>52.3%</b>	51.4%
Graduate and First Professional	56.0%	43.9%	40.9%	N/A	42.7%	<b>68.3%</b>	44.0%
<b>Enrollment Status</b>							
Full Time	55.9%	44.4%	49.1%	43.3%	54.7%	61.7%	48.6%
Part Time	62.2%	44.9%	44.5%	43.3%	<b>42.5%</b>	N/A	54.1%
<b>Race</b>							
American Indian or Alaska Native	59.3%	<b>58.5%</b>	44.3%	47.6%	N/A	57.0%	49.6%
Asian, Native Hawaiian, Pacific Islander	48.1%	51.8%	47.0%	49.5%	55.4%	<b>54.8%</b>	49.0%
Black of African American	47.8%	44.5%	35.1%	37.9%	<b>35.3%</b>	<b>66.6%</b>	48.1%
Hispanic	59.2%	55.4%	55.2%	48.1%	<b>59.9%</b>	62.0%	55.1%
White	58.3%	43.4%	49.2%	42.9%	51.6%	62.1%	51.9%
Nonresident Alien	43.6%	40.9%	36.0%	48.6%	<b>61.4%</b>	N/A	42.1%
Unknown Race	58.5%	46.0%	45.6%	35.0%	52.5%	58.6%	50.9%
<b>Degree Type</b>							
Biological/Life Sciences	41.2%	42.2%	40.1%	33.0%	55.7%	N/A	38.8%
Business Management/Admin.	<b>35.9%</b>	28.7%	31.8%	<b>23.3%</b>	<b>30.0%</b>	<b>51.6%</b>	31.7%
Education	<b>68.5%</b>	<b>72.7%</b>	<b>75.0%</b>	<b>78.3%</b>	<b>81.3%</b>	<b>78.8%</b>	<b>75.4%</b>
Engineering	<b>12.7%</b>	<b>13.6%</b>	<b>12.5%</b>	<b>5.1%</b>	N/A	N/A	<b>6.9%</b>
Law	N/A	41.4%	N/A	N/A	N/A	N/A	N/A
Mathematics	N/A	<b>34.5%</b>	35.6%	44.4%	52.8%	N/A	<b>27.0%</b>
Medicine	N/A	40.9%	N/A	N/A	N/A	N/A	N/A
Physical Science	<b>36.6%</b>	<b>31.6%</b>	32.9%	<b>25.3%</b>	48.6%	N/A	<b>26.9%</b>
<b>Age</b>							
17 and under	60.3%	48.5%	<b>66.2%</b>	51.0%	N/A	N/A	55.1%
18–19	<b>69.0%</b>	54.1%	<b>68.3%</b>	<b>62.2%</b>	59.0%	N/A	<b>59.3%</b>
20–21	<b>67.3%</b>	<b>57.0%</b>	64.2%	<b>56.0%</b>	57.4%	N/A	<b>60.1%</b>
22–24	38.9%	42.4%	<b>31.6%</b>	31.2%	51.6%	N/A	41.9%
25 and over	53.1%	39.0%	<b>31.1%</b>	32.5%	45.3%	N/A	48.4%

\*N/A means that there are not enough respondents to provide valuable percentages.

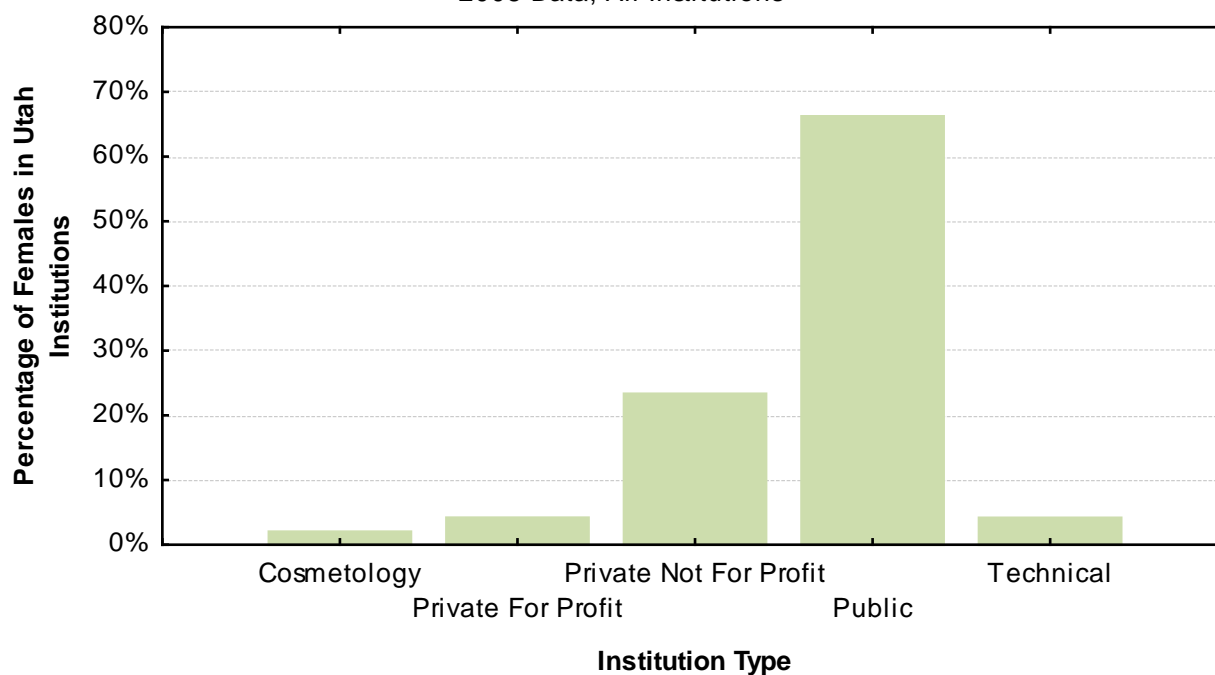
Black boxes: Strength of institution (relative to self).

Gray boxes: Weakness of institution (relative to self).

## Section 4: Utah Categories

Table 4.1: Utah Students by Type of Institution Attending					
Utah Institutional Category	Number of Institutions Submitting Data	Total Number of Female Students	Percentage of Total Female Students	Total Number of Male Students	Percentage of Total Male Students
USHE	10	73488	66.2%	76270	69.3%
Private Not-For-Profit	4	25906	23.4%	24280	22.1%
Private For-Profit	19	4662	4.2%	3683	3.3%
Technical	10	4630	4.2%	5560	5.1%
Cosmetology	24	2249	2.0%	241	0.2%
<b>Total</b>	<b>62</b>	<b>110935</b>	<b>100.00%</b>	<b>110034</b>	<b>100%</b>

Figure 4.1: Institution Type of Females Who Are Attending in Utah  
2008 Data, All Institutions



*Note:* See Appendix A for breakdown of institution classifications

## Section 5: Enrollment for All Types of Utah Institutions

<b>Table 5.1: Individual School Enrollment Totals</b>			
<b>Institution</b>	<b>Enrollment Total</b>	<b>Enrollment Male</b>	<b>Enrollment Female</b>
AmeriTech College (Draper)	100	11	89
AmeriTech College (Provo)	363	99	264
Argosy University (Draper)	64	28	36
Bridgerland Applied Technology College (Logan)	551	258	293
Brigham Young University (Provo)	34244	17750	16494
Cameo College of Essential Beauty (Murray)	243	0	243
Careers Unlimited (Orem)	121	3	118
Certified Careers Institute (Clearfield)	11	1	10
Certified Careers Institute (Salt Lake City)	86	6	80
College of Eastern Utah (Price)	1438	604	834
Dallas Roberts Academy of Hair Design & Aesthetics (Provo)	143	2	141
Davis Applied Technology College (Kaysville)	3647	1935	1712
DeVry University (Sandy)	93	50	43
Dixie State College of Utah (St. George)	86	50	36
Eagle Gate College (Layton)	406	135	271
Eagle Gate College (Murray)	119	37	82
Eagle Gate College (Salt Lake City)	178	66	112
Echelon Edge Academy Of Hair Skin and Nails (Sandy)	112	3	109
Evans Hairstyling College (Cedar City)	24	0	24
Evans Hairstyling College (St. George)	29	0	29
Everest College (West Valley City)	179	51	128
Fran Brown College of Beauty (Layton)	165	2	163
Hairitage Hair Academy (St. George)	34	0	34
Healing Mountain Massage School (Salt Lake City)	15	4	11
ImageWorks Academy of Hair Design (Spanish Fork)	64	0	64
ITT Technical Institute (Murray)	661	561	100
LDS Business College (Salt Lake City)	1377	682	695
Maximum Style Tec School of Cosmetology (Logan)	32	0	32
Mountainland Applied Technology College (Orem)	606	190	416
Myotherapy College of Utah (Salt Lake City)	66	8	58
Neumont University (South Jordan)	271	259	12
Ogden Institute of Massage Therapy (Ogden)	31	6	25
Ogden–Weber Applied Technology College (Ogden)	3326	1947	1379
Paul Mitchell the School (Provo)	245	16	229
Paul Mitchell the School (Salt Lake City)	311	46	265
Premier Hair Academy (West Valley City)	83	33	50
Provo College (Provo)	244	70	174
Renaissance School of Therapeutic Massage (Bountiful)	11	0	11

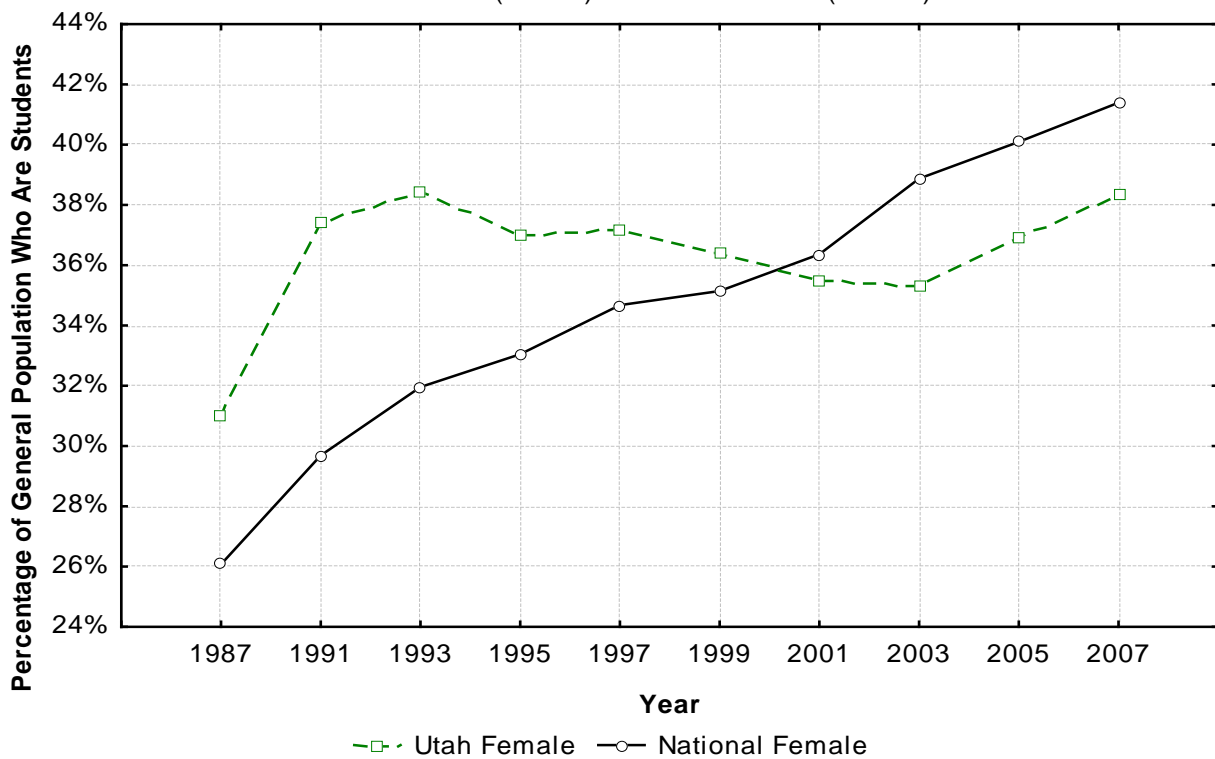


<b>Table 5.1 (Cont.): Individual School Enrollment Totals</b>			
<b>Institution</b>	<b>Enrollment Total</b>	<b>Enrollment Male</b>	<b>Enrollment Female</b>
Salt Lake Community College (Salt Lake City)	29396	14799	14597
Sherman Kendall Academy of Beauty Arts & Sciences (Midvale)	31	0	31
Sherman Kendall Academy (Salt Lake City)	45	3	42
Skinworks School of Advanced Skincare (Salt Lake City)	49	1	48
Snow College (Ephraim)	3798	1925	1973
Southern Utah University (Cedar City)	7516	3174	4342
Southwest Applied Technology Center (Cedar City)	516	346	170
Stacey's Hands of Champions (Ogden)	109	4	105
Stevens Henager College (Logan)	225	122	103
Stevens-Henager College (Murray)	876	355	521
Stevens-Henager College of Business (Provo)	646	288	358
Stevens-Henager College (Ogden)	371	171	200
The Art Institute of Salt Lake City (Draper)	233	93	140
Uintah Basin Applied Technology College (Roosevelt)	700	266	434
University of Phoenix-Utah Campus (Salt Lake City)	3396	1744	1652
University of Utah (Salt Lake City)	28211	15643	12568
Utah Career College (Orem)	422	87	335
Utah Career College (Layton)	38	14	24
Utah College of Massage Therapy (Salt Lake City)	95	20	75
Utah College of Massage Therapy (Lindon)	194	41	153
Utah State University (Logan)	15099	7818	7281
Utah State University-Continuing Education (Logan)	10130	3959	6171
Utah Valley University (Orem)	26696	15148	11548
Weber State University (Ogden)	21388	10350	11038
Western Governors University (Salt Lake City)	11706	4485	7221
Westminster College (Salt Lake City)	2859	1363	1496
<b>Total</b>	<b>220969</b>	<b>110034</b>	<b>110935</b>

## Section 6: Longitudinal Data<sup>1</sup>

Year	Percentage of National Males 18–24 Going to School	Percentage of National Females 18–24 Going to School	Percentage of Utah Males 18–24 Going to School	Percentage of Utah Females 18–24 Going to School	Percentage of National Students Who Are Female	Percentage of Utah Students Who Are Female
1987	24.73%	26.08%	33.41%	30.99%	54.00%	47.60%
1991	26.06%	29.69%	36.06%	37.41%	55.10%	49.70%
1993	27.94%	31.96%	35.68%	38.43%	55.60%	50.40%
1995	28.03%	33.05%	33.21%	37.04%	56.00%	50.60%
1997	28.63%	34.68%	34.14%	37.16%	56.20%	51.20%
1999	28.45%	35.14%	33.52%	36.41%	56.30%	50.30%
2001	28.64%	36.37%	33.21%	35.49%	56.40%	49.60%
2003	30.08%	38.87%	31.61%	35.34%	57.30%	49.80%
2005	30.85%	40.09%	31.12%	36.90%	57.40%	49.80%
2007	32.15%	41.39%	32.11%	38.32%	57.10%	50.00%

Figure 6.1: Percentage of 18-24-Year-Old Females Enrolled in Postsecondary Institutions by Year  
18-24 Students (IPEDS) / 18-24 Residents (Census)



<sup>1</sup> Enrollment data by age is only reported in odd-numbered years.

Figure 6.2: Percentage of 18-24-Year-Old Males Enrolled in Postsecondary Institutions by Year  
18-24 Students (IPEDS) / 18-24 Residents (Census)

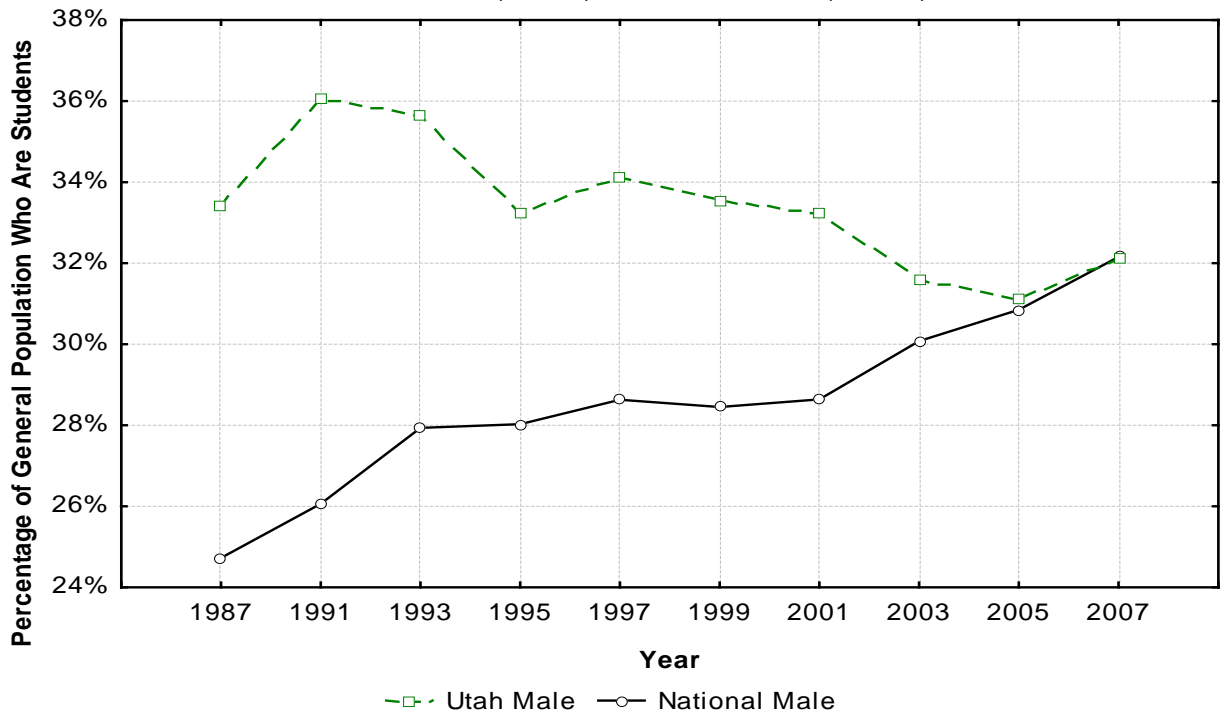


Figure 6.3: Percentage of Female Enrollment: Benchmark Comparison By Year. Utah Percent Enrollment Minus National Percent Enrollment (Difference) by Gender

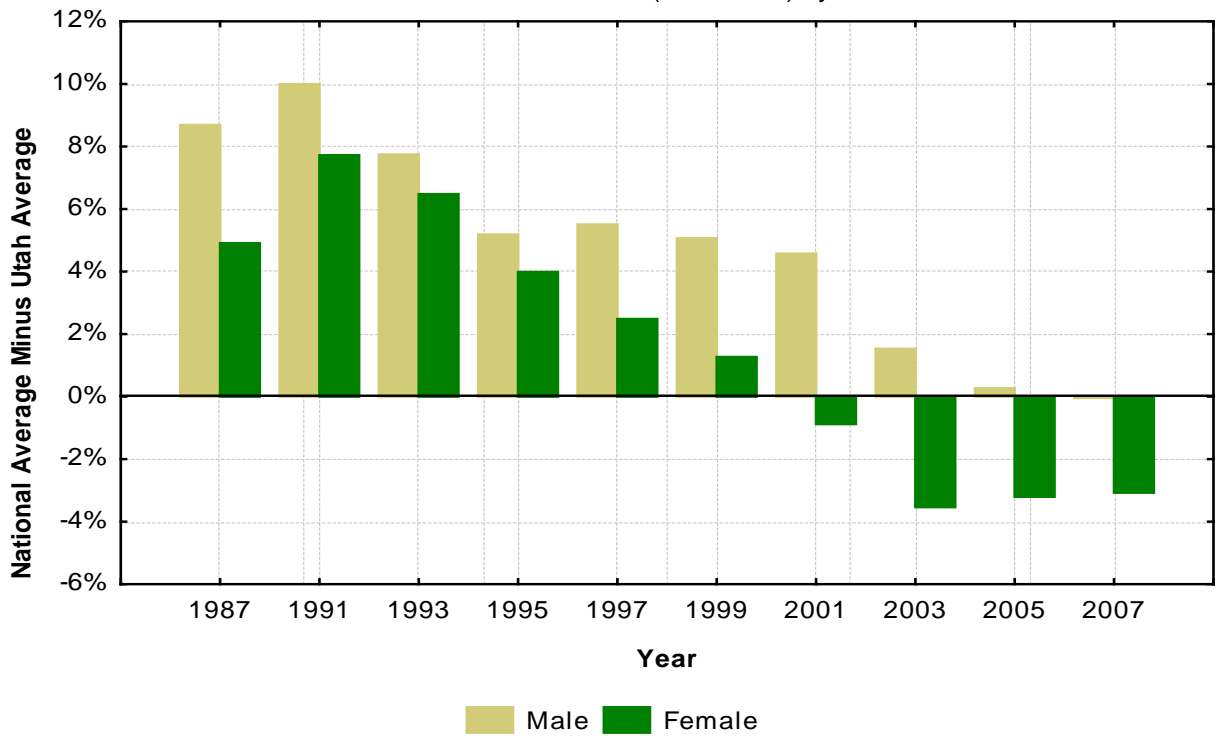


Figure 6.4: Percentage of 18-24-Year-Old Female Enrollment by Year  
1987-2007 (Odd Years), All Institutions

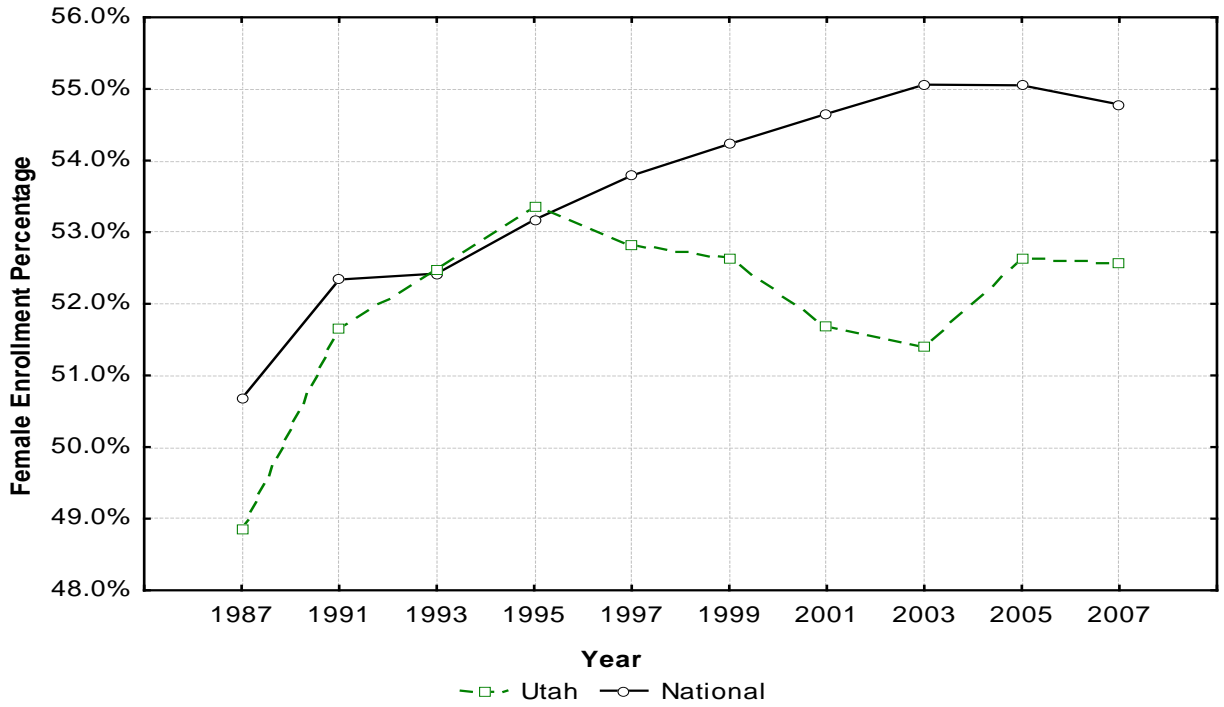
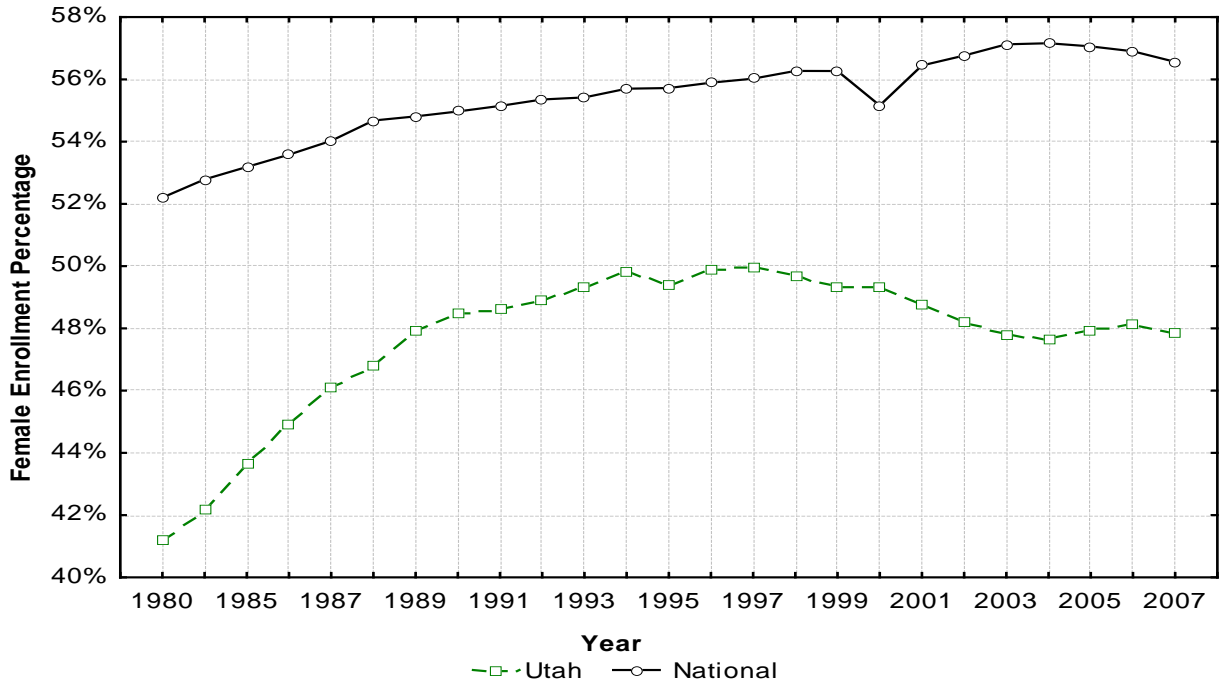


Figure 6.5: Percentage of Female Enrollment by Year  
1987-2007 (Odd Years), Public Institutions

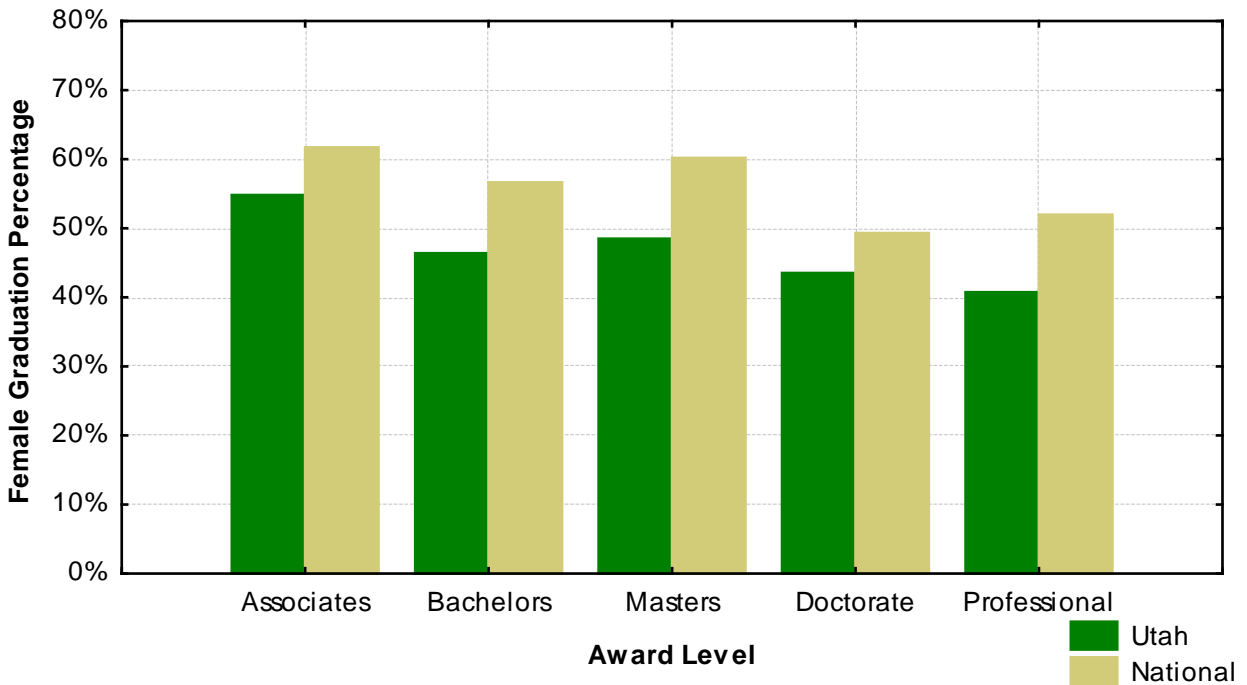


## PART II: GRADUATION

### Section 7: Completion Data

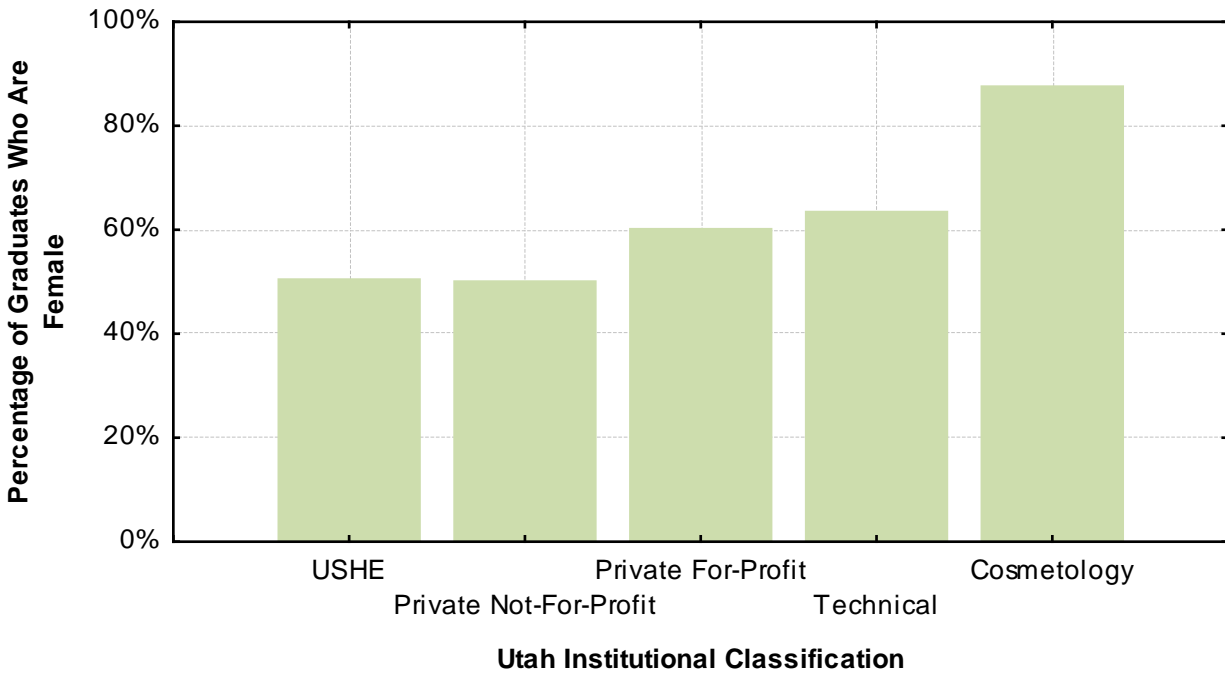
	Associates	Bachelors	Masters	Doctorate	First Professional	Total
USHE	54.8%	46.4%	48.5%	43.5%	40.7%	49.6%
Utah Public	54.8%	46.4%	48.5%	43.5%	40.7%	51.9%
National Public	61.7%	56.6%	60.2%	49.3%	52.0%	57.7%
Utah All Postsecondary	56.2%	47.7%	45.7%	43.5%	40.7%	53.5%
National Postsecondary	61.5%	57.3%	60.3%	50.7%	49.8%	59.3%

Figure 7.1: Female Graduation Percentage by Award Level  
2008 Data, Public Institutions



<b>Table 7.2: Female Graduation Percentage by Utah Institution Type</b>					
<b>Utah Category</b>	<b>Number of Institutions Used</b>	<b>Total Graduates</b>	<b>Male Graduates</b>	<b>Female Graduates</b>	<b>Percentage of Graduates Who Are Female</b>
USHE	9	26259	13031	13228	50.4%
Private Not-For-Profit	4	10352	5176	5176	50.0%
Private For-Profit	12	2913	1163	1750	60.1%
Technical	3	3269	1198	2071	63.4%
Cosmetology	14	1822	227	1595	87.5%

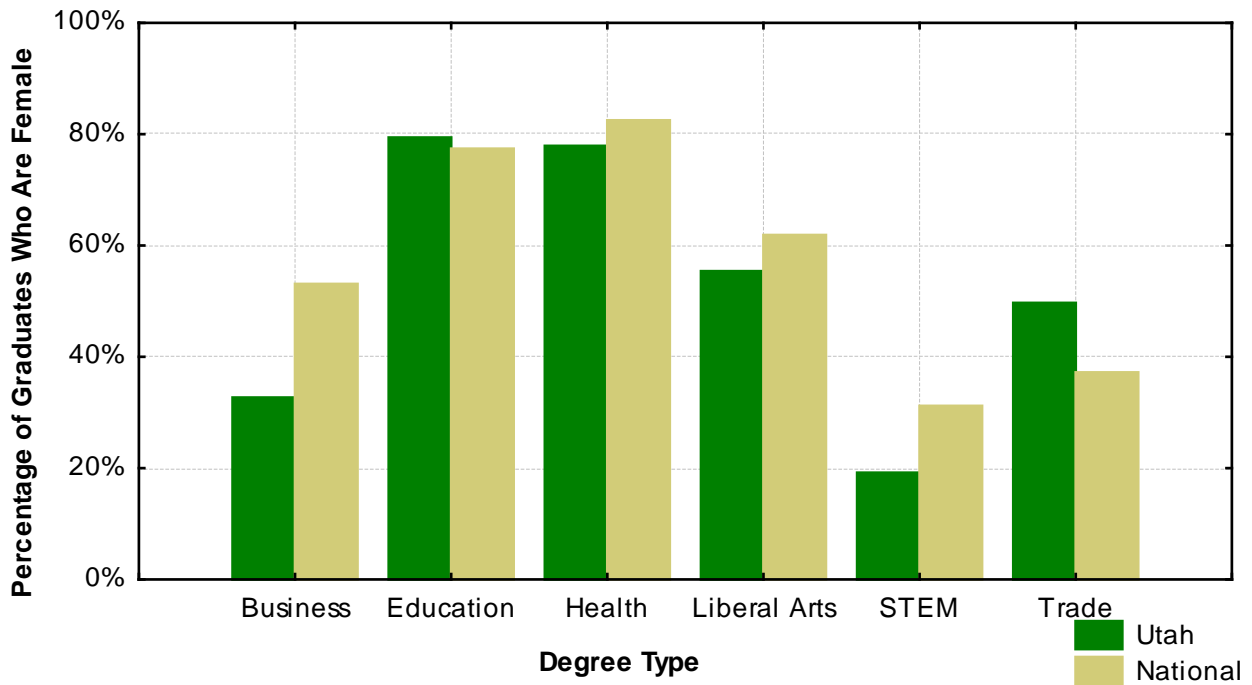
Figure 7.2: Percentage of Females Graduating from Postsecondary Institutions  
2008 Data, All Institutions



<b>Table 7.3: Percentage of Graduates Who Are Female by Degree Type</b>			
	<b>Percentage of Utah Female Enrollment</b>	<b>Percentage of National Female Enrollment</b>	<b>Difference</b>
<i>Business</i>	32.7%	53.1%	-20.4%
Education	79.4%	77.4%	2.0%
Health	77.9%	82.5%	-4.6%
<i>Liberal Arts</i>	55.4%	61.9%	-6.5%
<i>STEM</i>	19.2%	31.2%	-12.0%
<b>Trade</b>	<b>49.7%</b>	<b>37.2%</b>	<b>12.5%</b>
<i>All Groups</i>	53.3%	59.3%	-6.0%

*Note:* Shaded boxes (content bolded) are those categories that showed a 5% negative difference or more between Utah Public and National Public. Black boxes (content italicized) are those categories that showed a 5% positive difference or more between Utah Public and National Public

Figure 7.3: Percentage of Graduates Who Are Female by Degree Type  
Graduated in 2007-2008 Academic Year, All Institutions



\*See following table for list of degrees and their respective degree type.

**Table 7.4: Percentage of Graduates Who Are Female by Degree in Utah**

<b>Degree</b>	<b>Degree Category</b>	<b>Percentage of Graduates Who Are Female</b>
Agriculture, agriculture operations, and related sciences	Liberal Arts	41.1%
Architecture and related services	Liberal Arts	21.6%
Area: ethnic, cultural, and gender studies	Liberal Arts	47.5%
Biological and biomedical sciences	STEM	33.9%
Business management, marketing, and related support services	Business	31.8%
Communication, journalism, and related programs	Liberal Arts	52.5%
Communications technologies/technicians and support services	Liberal Arts	13.8%
Computer and information sciences and support services	STEM	10.9%
Construction trades	Trade	4.9%
Education	Education	79.4%
Engineering technologies/technicians	STEM	11.3%
Engineering	STEM	10.4%
English language and literature/letters	Liberal Arts	62.7%
Family and consumer sciences/human sciences	Liberal Arts	88.9%
Foreign languages, literatures, and linguistics	Liberal Arts	40.6%
Health professions and related clinical sciences	Health	77.9%
History	Liberal Arts	46.5%
Legal professions and studies	Business	48.5%
Liberal arts and sciences, general studies and humanities	Liberal Arts	55.2%
Mathematics and statistics	STEM	31.2%
Mechanic and repair technologies/technicians	Trade	3.8%
Multi/interdisciplinary studies	Liberal Arts	46.1%
Natural resources and conservation	Liberal Arts	41.8%
Parks, recreation, leisure, and fitness studies	Liberal Arts	62.3%
Personal and culinary services	Trade	94.9%
Philosophy and religious studies	Liberal Arts	18.3%
Physical sciences	STEM	28.6%
Precision production	Trade	11.7%
Psychology	Liberal Arts	62.9%
Public administration and social service professions	Liberal Arts	71.7%
Science technologies/technicians	Trade	35.3%
Security and protective services	Trade	38.7%
Social sciences	Liberal Arts	39.9%
Theology and religious vocations	Liberal Arts	N/A
Transportation and materials moving	Trade	10.6%
Visual and performing arts	Liberal Arts	63.2%



## Section 8: Utah Public and Private Not-For-Profit

Graduation rates are difficult to portray accurately. In the state of Utah, a high number of students take leave from school to serve LDS missions. Graduation rates are typically viewed in four-, six-, and eight-year increments. Unfortunately, graduation rates by gender are not tracked by IPEDS eight years after students begin school. To compare graduation rates by gender, we must look at six year rates. With the average time to graduate hovering around five years, six-year graduation rates in Utah do not accurately portray Utah's success or failure compared to national averages due to a disproportionate amount of two-year leaves of absence in Utah. To resolve this and other dilemmas, all universities nationwide report graduation statistics using adjusted cohort numbers. Cohorts take the initial number of first-time full-time enrolled students and subtracts those students that leave school due to military, church service, or death.

<b>Table 8.1: Graduation Numbers for Utah Public and Private Not-For-Profit</b>						
<b>Institution</b>	<b>Total Cohort</b>	<b>Total Male Cohort</b>	<b>Total Female Cohort</b>	<b>Total Cohort Graduates</b>	<b>Male Cohort Graduates</b>	<b>Female Cohort Graduates</b>
College of Eastern Utah	533	252	281	176	62	114
Dixie State College	1131	441	690	347	76	271
Salt Lake Community College	1831	868	963	373	138	235
Snow College	1227	503	724	474	122	352
Southern Utah University	528	145	383	200	49	151
University of Utah	1962	853	1109	1003	420	583
Utah State University	1498	487	1101	794	255	539
Utah Valley University	1928	1045	883	418	191	227
Weber State University	1719	717	1002	683	277	406
Brigham Young University	2927	812	2115	2325	658	1667
LDS Business College	264	104	160	106	33	73
Western Governors Univ.	25	14	11	14	8	6
Westminster College	315	116	199	171	63	108
<b>Total</b>	<b>15862</b>	<b>6337</b>	<b>9525</b>	<b>7073</b>	<b>2345</b>	<b>4728</b>
<i>Benchmark (National Public &amp; Private-NFP)</i>	<i>2021318</i>	<i>929599</i>	<i>1091719</i>	<i>908118</i>	<i>390739</i>	<i>517379</i>

<b>Table 8.2: Graduation Percentages for Utah Public and Private Not-For-Profit</b>			
<b>Institution</b>	<b>Percentage of Adjusted* Cohort Graduates</b>	<b>Percentage of Adjusted Male Cohort Graduates</b>	<b>Percentage of Adjusted Female Cohort Graduates</b>
College of Eastern Utah	33.0%	24.6%	40.6%
Dixie State College of Utah	30.7%	17.2%	39.3%
Salt Lake Community College	20.4%	15.9%	24.4%
Snow College	38.6%	24.3%	48.6%
Southern Utah University	37.9%	33.8%	39.4%
University of Utah	51.1%	49.2%	52.6%
Utah State University	53.0%	52.4%	53.3%
Utah Valley University	21.7%	18.3%	25.7%
Weber State University	39.7%	38.6%	40.5%
Brigham Young University	79.4%	81.0%	78.8%
LDS Business College	40.2%	31.7%	45.6%
Western Governors University	N/A	N/A	N/A
Westminster College	55.4%	58.3%	53.9%
<b>Average</b>	<b>44.6%</b>	<b>37.0%</b>	<b>49.6%</b>
<i>Benchmark (National Public &amp; Priv-NFP)</i>	<i>44.9%</i>	<i>42.0%</i>	<i>47.4%</i>
Difference	-0.3%	<b>-5.0%</b>	2.6%

\*Adjusted cohorts take into consideration military leave, church missions, and deaths.

*Note:* Shaded box (content bolded) is the category that showed at least a 5% negative difference between Utah Public/Private Not-For Profit and the National Benchmark.

## PART III: APPENDICES

### Appendix A: Gender Percentages in General and Student Populations

<b>Table A.1: Gender Percentages in General and Student Populations</b>				
<b>Year</b>	<b>National Population</b>	<b>Utah Population</b>	<b>National Student</b>	<b>Utah Student</b>
1980	49.9%	51.4%	52.2%	41.2%
1981	49.8%	51.4%	N/A	N/A
1982	49.7%	51.3%	N/A	N/A
1983	49.7%	51.1%	N/A	N/A
1984	49.6%	50.9%	52.8%	42.2%
1985	49.5%	50.8%	53.2%	43.7%
1986	49.4%	50.7%	53.6%	44.9%
1987	49.3%	50.7%	54.0%	46.1%
1988	49.3%	50.7%	54.7%	46.8%
1989	49.1%	50.7%	54.8%	47.9%
1990	49.0%	50.7%	55.0%	48.4%
1991	49.1%	50.7%	55.1%	48.6%
1992	49.0%	50.7%	55.3%	48.9%
1993	49.1%	50.6%	55.4%	49.3%
1994	49.1%	50.6%	55.7%	49.8%
1995	49.1%	50.6%	55.7%	49.4%
1996	49.0%	50.7%	55.9%	49.9%
1997	49.0%	50.7%	56.0%	50.0%
1998	49.0%	50.7%	56.3%	49.7%
1999	49.0%	50.6%	56.3%	49.3%
2000	48.8%	50.7%	55.2%	49.4%
2001	48.7%	50.0%	56.4%	48.7%
2002	48.6%	49.4%	56.8%	48.2%
2003	48.7%	48.6%	57.1%	47.8%
2004	48.6%	48.5%	57.2%	47.6%
2005	48.5%	48.4%	57.1%	47.9%
2006	48.5%	48.2%	56.9%	48.2%
2007	48.5%	48.2%	56.6%	47.9%

Figure A.1: Longitudinal Look at Resident and Student Populations

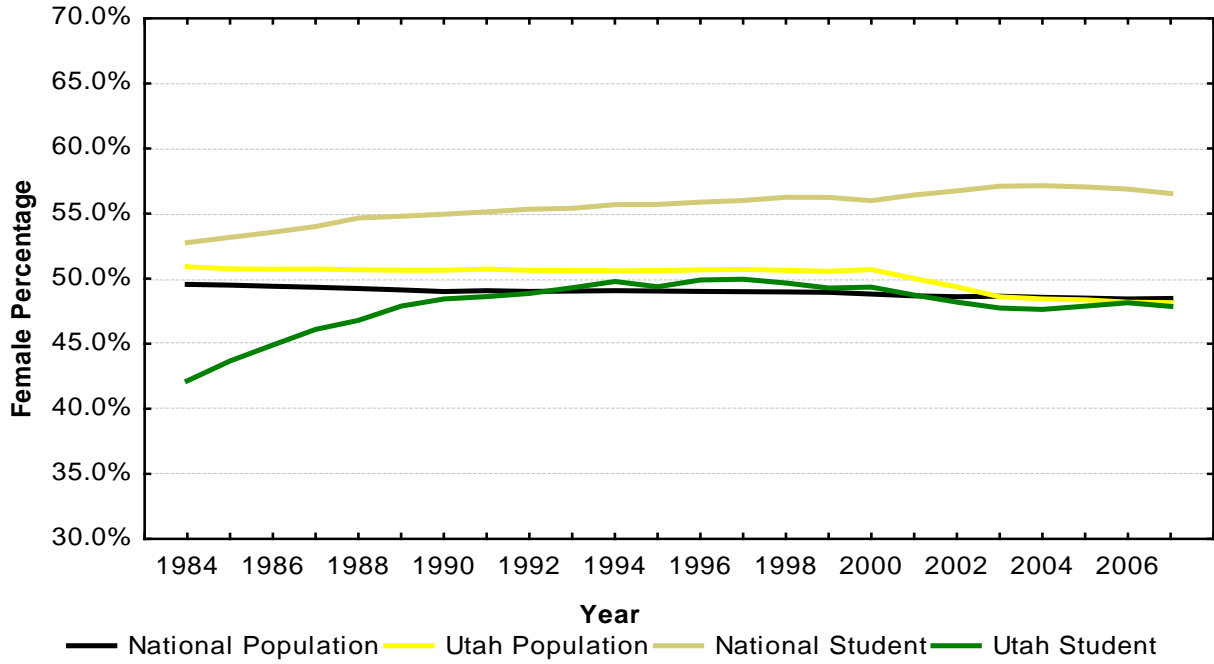
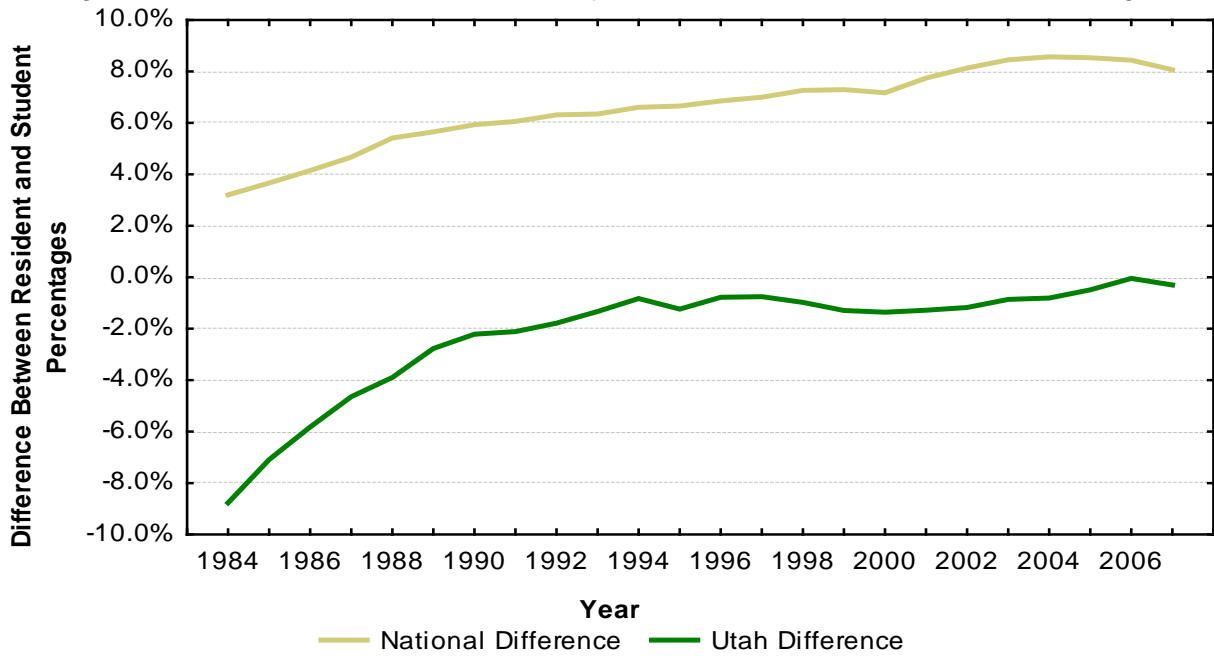


Figure A.2: Difference Between Female Population and Student Enrollment Percentages



## Appendix B: Classification of Utah Institutions

*Note:* Where appropriate, some institutions are listed in two categories.

### USHE Institutions (9)

College of Eastern Utah (Price)

Dixie State College (St. George)

Salt Lake Community College (Salt Lake City)

Snow College (Ephraim)

Southern Utah University (Cedar City)

University of Utah (Salt Lake City)

Utah State University (Logan)

Utah Valley University (Orem)

Weber State University (Ogden)

\*USU-Cont. Ed. (included in USHE totals but not included in individual institution reports)

### Public Institutions (17)

Bridgerland Applied Technology College (Logan)

College of Eastern Utah (Price)

Davis Applied Technology College (Kaysville)

Dixie Applied Technology College (St. George)

Dixie State College (St. George)

Mountainland Applied Technology College<sup>1</sup> (Orem)

Ogden-Weber Applied Technology Center (Ogden)

Salt Lake Community College (Salt Lake City)

Snow College (Ephraim)

Southern Utah University (Cedar City)

Southwest Applied Technology Center<sup>2</sup> (Cedar City)

Uintah Basin Applied Technology Center (Roosevelt)

University of Utah (Salt Lake City)

Utah State University (Logan)

Utah State University–Continuing Education<sup>3</sup> (Logan)

Utah Valley University (Orem)

Weber State University (Ogden)

### Private Not-For-Profit (4)

Brigham Young University (Provo)

LDS Business College (Salt Lake City)

Westminster College (Salt Lake City)

Western Governors University (Salt Lake City)

---

<sup>1</sup> Began reporting as a public institution in 2006

<sup>2</sup> Began reporting as a public institution in 2007

<sup>3</sup> Began reporting as a public institution in 2003

### **Private For-Profit Institutions (20)**

AmeriTech College (Draper)  
AmeriTech College (Provo)  
Argosy University (Salt Lake City)  
Careers Unlimited (Orem)  
DeVry University (Sandy)  
Eagle Gate College (Layton)  
Eagle Gate College (Murray)  
Eagle Gate College (Salt Lake City)  
Everest College (West Valley City)  
Neumont University (South Jordan)  
Provo College (Provo)  
Stevens-Henager College (Logan)  
Stevens-Henager College (Murray)  
Stevens-Henager College (Provo)  
Stevens-Henager College (Ogden)  
The Art Institute of Salt Lake City (Draper)  
University of Phoenix-Utah Campus (Salt Lake City)  
Utah Career College (Layton)  
Utah Career College (Orem)  
Utah Career College (West Jordan)

### **Technical Institutions (Private For-Profit and Public, 10)**

Ameritech College (Draper)  
Ameritech College (Provo)  
Bridgerland Applied Technology College (Logan)  
Certified Careers Institute (Clearfield)  
Certified Careers Institute (Salt Lake City)  
ITT Technical Institute (Murray)  
Mountainland Applied Technology College (Orem)  
Ogden-Weber Applied Technology Center (Ogden)  
Southwest Applied Technology Center (Cedar City)  
Uintah Basin Applied Technology College (Roosevelt)

### **Cosmetology (23)**

Bon Losee Academy of Hair Artistry (Provo)  
Cameo College of Essential Beauty (Murray)  
Dallas Roberts Academy of Hair Design & Aesthetics (Provo)  
Echelon Edge Academy of Hair, Skin, and Nails (Sandy)  
Evans Hairstyling College (Cedar City)  
Evans Hairstyling College (St. George)  
Fran Brown College of Beauty (Layton)  
Hairitage Hair Academy (St. George)  
Healing Mountain Massage School (Salt Lake City)  
ImageWorks Academy of Hair Design (Spanish Fork)  
Maximum Style Tec School of Cosmetology (Logan)

Myotherapy College of Utah (Salt Lake City)  
Ogden Institute of Massage Therapy (Ogden)  
Paul Mitchell the School (Provo)  
Paul Mitchell the School (Salt Lake City)  
Premier Hair Academy (West Valley City)  
Renaissance School of Therapeutic Massage (Bountiful)  
Sherman Kendall Academy of Beauty Arts & Sciences (Midvale)  
Sherman Kendall Academy of Beauty Arts & Sciences (Salt Lake City)  
Skinworks School of Advanced Skincare (Salt Lake City)  
Staceys Hands of Champions (Ogden)  
Utah College of Massage Therapy (Salt Lake City)  
Utah College of Massage Therapy (Utah Valley)

## Appendix C: Population Counts<sup>1</sup>

Table C.1: Census Population Counts for 18–24-Year-Olds (All Institutions)								
Year	National Male	National Female	Utah Male	Utah Female	National Student Male	National Student Female	Utah Student Male 18-24	Utah Student Female 18-24
2007	15193533	14298882	170121	158105	5822233	8053621	54633	60590
2006	15110196	14202754	169583	157813				
2005	15036029	14169528	172036	161227	5614745	7805984	53535	59486
2004	14979408	14151177	174755	164265				
2003	14785308	14015723	175702	166224	5501535	7487950	55532	58747
2002	14601234	13818627	171732	167493				
2001	14347863	13618085	165262	165435	5091393	6654359	54888	58714
2000	13977035	13335458	157737	162265				
1999	13275767	12735682	148754	152230	4719386	6042783	49859	55431
1998	12994626	12481575	143283	147080				
1997	12737143	12242893	136750	140729	4781860	6052410	46683	52296
1996	12662112	12180498	131027	134686				
1995	12792620	12319693	125003	128171	4817683	6000470	41518	47469
1994	12930746	12466030	117565	120485				
1993	13111245	12628680	111078	113923	4871191	5973648	39635	43786
1992	13239574	12736468	106099	108914				
1991	13417656	12934607	102344	105429	4542450	5639053	36904	39440
1990	13679388	13155456	99751	102421				
1989	13846373	13382414	96429	99034				
1988	13913016	13504687	93782	96419				
1987	14071096	13706597	93135	95969	4442343	5074746	31120	29739
1986	14343528	14016408	95278	98102				
1985	14648864	14366417	97335	100359				
1984	14914016	14662330	98086	101786				
1983	15099076	14894431	99665	104102				
1982	15177463	15014208	102098	107479				
1981	15164633	15029852	103756	109519				
1980	15053675	14968532	104996	110985				

<sup>1</sup> Enrollment data by age is reported only in odd-numbered years.