

IPEDS ENROLLMENT AND GRADUATION REPORT

2008 Data

April 21, 2010
UWEP 2010-203



*Office of the Utah Women & Education Project
Utah Valley University*

Acknowledgements

Funding for this report came from a Carl D. Perkins Leadership Grant (2009-2010) through the Utah State Office of Education and Utah Valley University. Support was also provided by the Utah System of Higher Education (USHE). The raw data used in this report was mined from the Integrated Postsecondary Education Data System (IPEDS) and was analyzed by A. David King and Dr. Susan R. Madsen. Additional feedback and insights were provided by the following individuals: Joseph Curtin, Cheryl Hanewicz, and Susan Thackeray.

A. David King, B.S.
M.Stat. Graduate Student in Econometrics
University of Utah
dking@utahsbr.edu

Susan R. Madsen, Ed.D.
Director of the Utah Women & Education Project
Utah Valley University
madsensu@uvu.edu

Copyright © 2010 by the Office of the Utah Women and Education Project (UWEP) at Utah Valley University. All rights reserved. Printed in the United States of America. This publication, or parts thereof, may not be reproduced in any form without permission of UWEP.

Utah Women and Education Project
Utah Valley University
Dr. Susan R. Madsen, Director
800 West University Parkway, MS 119
Orem, Utah 84058
madsensu@uvu.edu
801.863.6888

Table of Contents

INTRODUCTION

| | |
|--|---|
| Acknowledgments | 1 |
| Table of Contents | 2 |
| List of Tables and Figures | 3 |
| Background Information (including report acronyms) | 4 |

PART I: ENROLLMENT

| | | |
|-----------|--|----|
| Section 1 | Utah Public vs. National Public Institutions | 6 |
| Section 2 | USHE, Private Not-For-Profit, and Combined | 11 |
| Section 3 | Institutional Breakdown: USHE and Private Not-For-Profit | 12 |
| Section 4 | Utah Categories | 14 |
| Section 5 | Enrollment for All Types of Utah Institutions | 15 |
| Section 6 | Longitudinal Data | 17 |

PART II: GRADUATION

| | | |
|-----------|--|----|
| Section 7 | Completion Data | 20 |
| Section 8 | Utah Public and Private Not-For-Profit | 24 |

PART III: APPENDICES

| | | |
|------------|---|----|
| Appendix A | Gender Percentages in General and Student Populations | 26 |
| Appendix B | Classification of Utah Institutions | 28 |
| Appendix C | Population Counts | 31 |

List of Tables and Figures

TABLES

| | | |
|-----------|--|-------|
| Table 1.1 | Female Enrollment Percentage | 6 |
| Table 2.1 | Female Enrollment Percentage by School Control | 11 |
| Table 3.1 | Individual Utah School Breakdown of Enrollment Variables | 12,13 |
| Table 4.1 | Utah Students by Type of Institution Attending | 14 |
| Table 5.1 | Individual School Enrollment Totals | 15,16 |
| Table 6.1 | Percentage of 18–24-Year-Olds Attending Postsecondary Institutions | 17 |
| Table 7.1 | Female Graduation Percentage by Award Level | 20 |
| Table 7.2 | Female Graduation Percentage by Utah Institution Type | 21 |
| Table 7.3 | Percentage of Graduates Who Are Female by Degree Type | 22 |
| Table 7.4 | Percentage of Graduates Who Are Female by Degree in Utah | 23 |
| Table 8.1 | Graduation Numbers for Utah Public and Private Not-For-Profit | 24 |
| Table 8.2 | Graduation Percentages for Utah Public and Private Not-For-Profit | 25 |
| Table A.1 | Gender Percentages in General and Student Populations | 26 |
| Table C.1 | Census Population Counts for 18–24-Year-Olds (All Institutions) | 31 |

FIGURES

| | | |
|------------|---|----|
| Figure 1.1 | Female Enrollment by State | 7 |
| Figure 1.2 | First Time Female Enrollment by State | 7 |
| Figure 1.3 | Female Enrollment by Degree Level | 8 |
| Figure 1.4 | Female Enrollment by Student Status | 8 |
| Figure 1.5 | Female Enrollment by Race | 9 |
| Figure 1.6 | Female Enrollment by Degree Type | 9 |
| Figure 1.7 | Female Enrollment by Age | 10 |
| Figure 4.1 | Institution Type of Females Who Are Attending in Utah | 14 |
| Figure 6.1 | Percentage of 18–24-Year-Old Females Enrolled in Postsecondary Institutions by Year | 17 |
| Figure 6.2 | Percentage of 18–24-Year-Old Males Enrolled in Postsecondary Institutions by Year | 18 |
| Figure 6.3 | Percentage of Female Enrollment: Benchmark Comparison by Year | 18 |
| Figure 6.4 | Percentage of 18–24-Year-Old Female Enrollment by Year | 19 |
| Figure 6.5 | Percentage of Female Enrollment by Year | 19 |
| Figure 7.1 | Female Graduation Percentage by Award Level | 20 |
| Figure 7.2 | Percentage of Females Graduating from Postsecondary Institutions | 21 |
| Figure 7.3 | Percentage of Graduates Who Are Female by Degree Type | 22 |
| Figure A.1 | Longitudinal Look at Resident and Student Populations | 27 |
| Figure A.2 | Difference Between Female Population and Student Enrollment Percentages | 27 |

Background Information

The raw data from this report was downloaded from the National Center of Educational Statistics (NCES) Integrated Postsecondary Education Data System (IPEDS). The initial download included 6894 institutions. Utah had 67 postsecondary institutions listed during the 2008 year. Only variables where at least 30 institutions reported data were used. Percentages are given only if there are at least 30 students for any given cohort.

This report deals specifically with enrollment and graduation percentages of females. There are two methods of looking at female enrollment. The first addresses the percentage of enrolled students who are female. For example, if there are 100 students in an institution and 55 of them are female, the percentage of enrollment who are female will be 55%. All graphs looking at this have the axis title “Female Enrollment Percentage.” The second method titled “Percentage of General Population Who Are Students” addresses the percentage of the state and nation’s 18–24 population who are female and going to a public or postsecondary institution. For example, if there are 1,000 females 18-24 years old living in the state and 400 of them are enrolled in a postsecondary institution, the “Percentage of General Population Who Are Students” will be 40%.

Feedback from previous reports suggested the need to address male-female population ratios. The focus of much of this report looks at the ratio of females to males enrolled in and graduating from postsecondary institutions. Nationally among 18–24 year olds, 48.5% are female. Utah closely mirrors the national average at 48.2%. This difference of 0.3% is negligible in the overwhelming disparity between Utah and National averages. Please see Appendix A for a historical look at male-female population ratios.

IPEDS collects age-specific enrollment numbers during odd-numbered years. For this reason, longitudinal tracking figures are reported every odd year. Therefore, some figures from the 2007 report could not be updated for this 2008 report.

REPORT ACRONYMS

| | |
|-------|---|
| IPEDS | Integrated Postsecondary Education Data System |
| STEM | Science, Technology, Engineering, and Mathematics |
| USHE | Utah System of Higher Education |
| NCES | National Center for Education Statistics |

In the state of Utah there is some disparity between “Public Institutions” and the Utah System of Higher Education (USHE) institutions (see Appendix B for lists of institutions within the various report categories). We cannot do national comparisons directly with our USHE institutions. National comparisons reported in this document use Utah “Public Institutions” rather than exclusively USHE institutions (see next page for more details).

| Public Institutions | USHE Institution |
|---|-------------------------|
| Bridgerland Applied Technology College (BATC) | No |
| College of Eastern Utah (CEU) | Yes |
| Dixie State College (DSC) | Yes |
| Dixie Applied Technology College (DXATC) | No |
| Mountainland Applied Technology College (MATC) | No |
| Ogden–Weber Applied Technology Center (OWATC) | No |
| Salt Lake Community College (SLCC) | Yes |
| Snow College (SC) | Yes |
| Southern Utah University (SUU) | Yes |
| Southwest Applied Technology Center (SWATC) | No |
| Uintah Basin Applied Technology Center (UBATC) | No |
| University of Utah (U) | Yes |
| Utah State University (USU) | Yes |
| Utah State University–Continuing Education (USU-CE) | Yes |
| Utah Valley University (UVU) | Yes |
| Weber State University (WSU) | Yes |

PART I: ENROLLMENT

Section 1: Utah Public vs. National Public Institutions

| Table 1.1: Female Enrollment Percentage | | | | |
|--|-------|-------------|-----------------|-------------------------|
| Category (Enrollment Percentages) | USHE | Utah Public | National Public | Difference ¹ |
| Grand Total | 49.1% | 49.0% | 57.4% | -8.4% |
| Undergraduate Total | 48.7% | 49.0% | 57.1% | -8.1% |
| First Time Undergraduate | 51.4% | 51.9% | 54.9% | -3.0% |
| Graduate and First Professional | 49.0% | 49.0% | 58.8% | -9.8% |
| Enrollment Status | | | | |
| Full Time | 47.7% | 47.7% | 55.8% | -8.1% |
| Part Time | 50.6% | 50.2% | 59.8% | -9.6% |
| Race | | | | |
| American Indian or Alaska Native | 58.4% | 57.8% | 60.2% | -2.4% |
| Asian, Native Hawaiian, Pacific Islander | 51.1% | 50.8% | 53.9% | -3.1% |
| Black or African American | 41.9% | 42.0% | 64.9% | -22.9% |
| Hispanic | 53.0% | 52.6% | 58.8% | -6.2% |
| White | 48.8% | 48.7% | 56.3% | -7.6% |
| Nonresident Alien | 50.1% | 50.1% | 46.6% | 4.5% |
| Unknown Race | 43.3% | 43.3% | 54.2% | -10.9% |
| Degree Type ² | | | | |
| Biological/Life Sciences | 40.0% | 40.0% | 59.5% | -19.5% |
| Business Management and Admin. | 28.8% | 28.8% | 49.5% | -20.7% |
| Education | 74.6% | 74.6% | 75.8% | -1.2% |
| Engineering | 12.1% | 12.1% | 18.7% | -6.6% |
| Law | 41.4% | 41.4% | 47.1% | -5.7% |
| Mathematics | 36.1% | 36.1% | 42.7% | -6.6% |
| Medicine | 40.9% | 40.9% | 48.4% | -7.5% |
| Physical Science | 30.8% | 30.8% | 40.1% | -9.3% |
| Age | | | | |
| 17 and under | 44.6% | 55.3% | 58.4% | -3.1% |
| 18–19 | 39.4% | 60.4% | 54.8% | 5.6% |
| 20–21 | 42.0% | 57.9% | 54.6% | 3.3% |
| 22–24 | 62.1% | 38.0% | 53.6% | -15.6% |
| 25 and over | 56.4% | 43.6% | 60.6% | -17.0% |

Note: Shaded boxes (content bolded) are those categories that showed a 5% negative difference or more between Utah Public and National Public. Black boxes (content italicized) are those categories that showed a 5% positive difference or more between Utah Public and National Public.

¹ This column reports the difference between “Utah Public” to “National Public.”

² Degree type is reported by institutions offering at least a bachelor’s degree.

Figure 1.1: Female Enrollment by State
 2008 Data, Public Institutions
 Solid Green Bar Denotes Utah Average

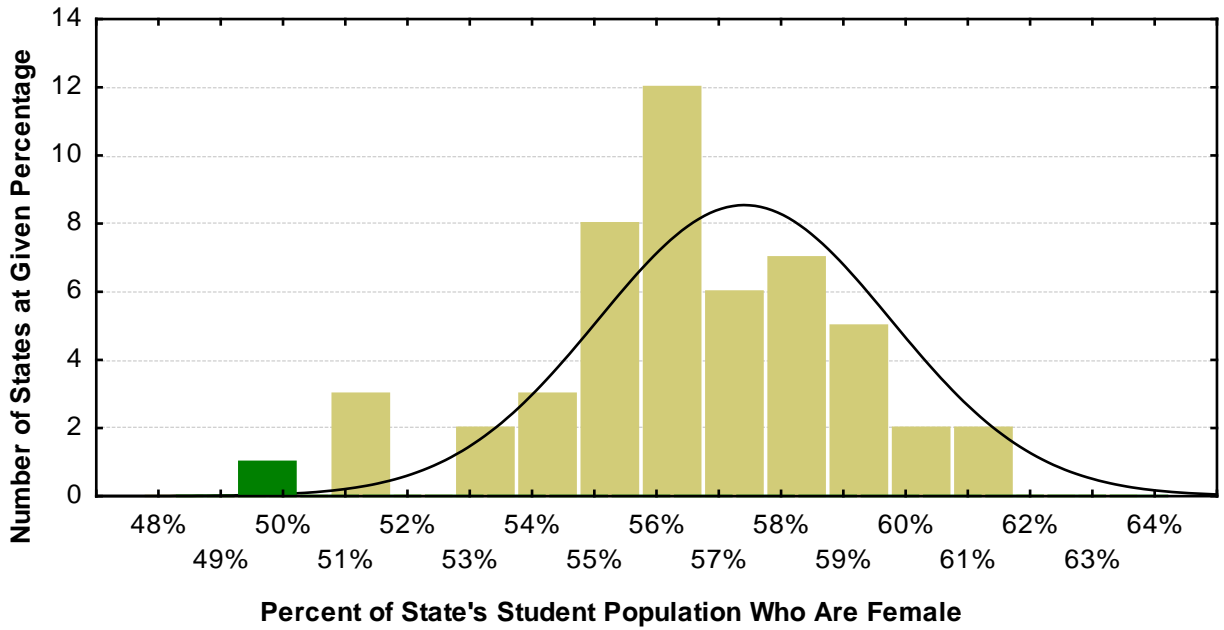


Figure 1.2: First Time Female Enrollment by State
 2008 Data, Public Institutions
 Solid Green Bar Denotes Utah Average

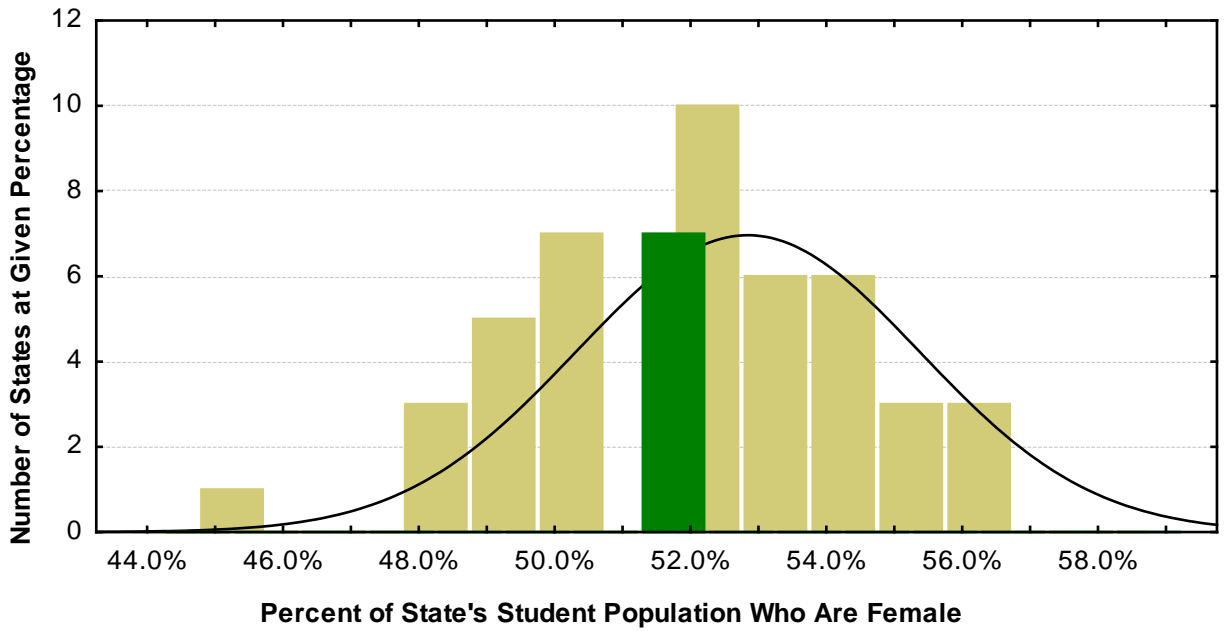


Figure 1.3: Female Enrollment by Degree Level
2008 Data, Public Institutions

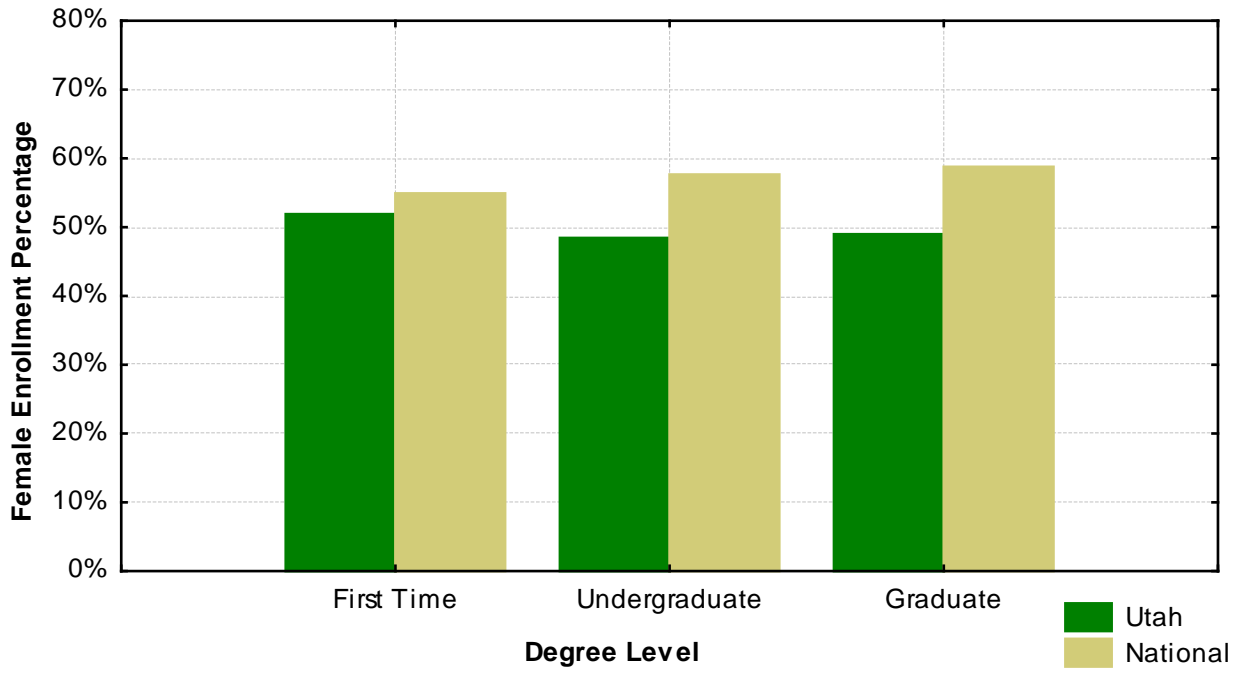


Figure 1.4: Female Enrollment by Student Status
2008 Data, Public Institutions

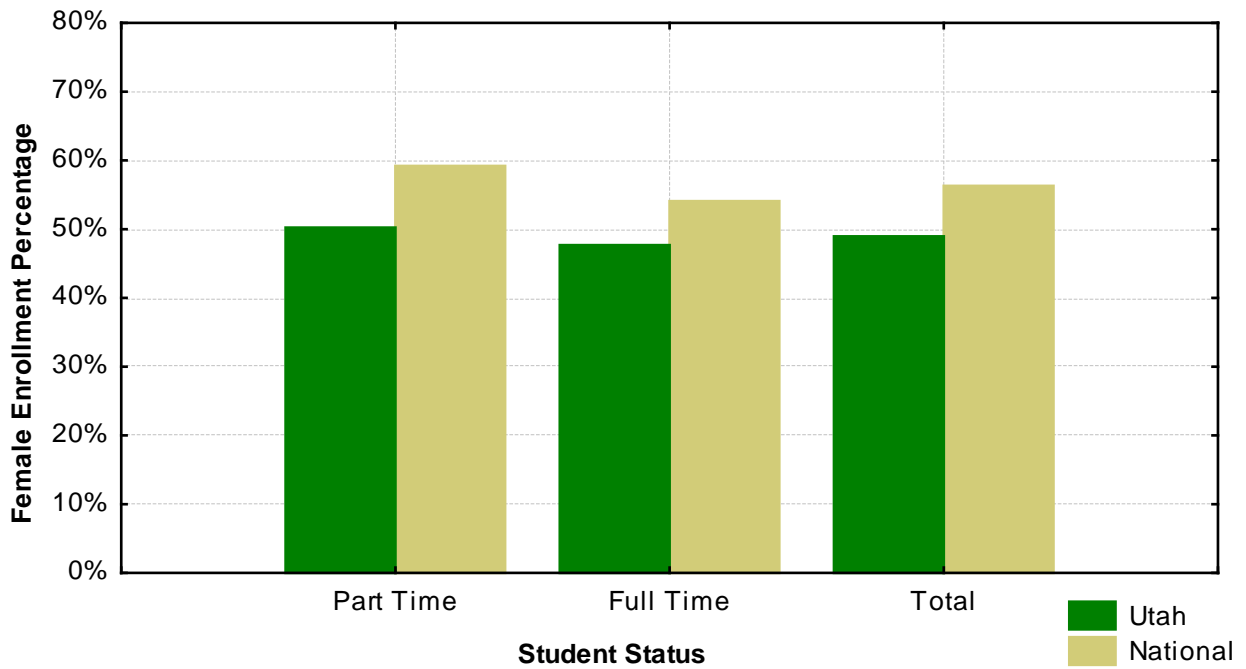


Figure 1.5: Female Enrollment by Race
2008 Data, Public Institutions

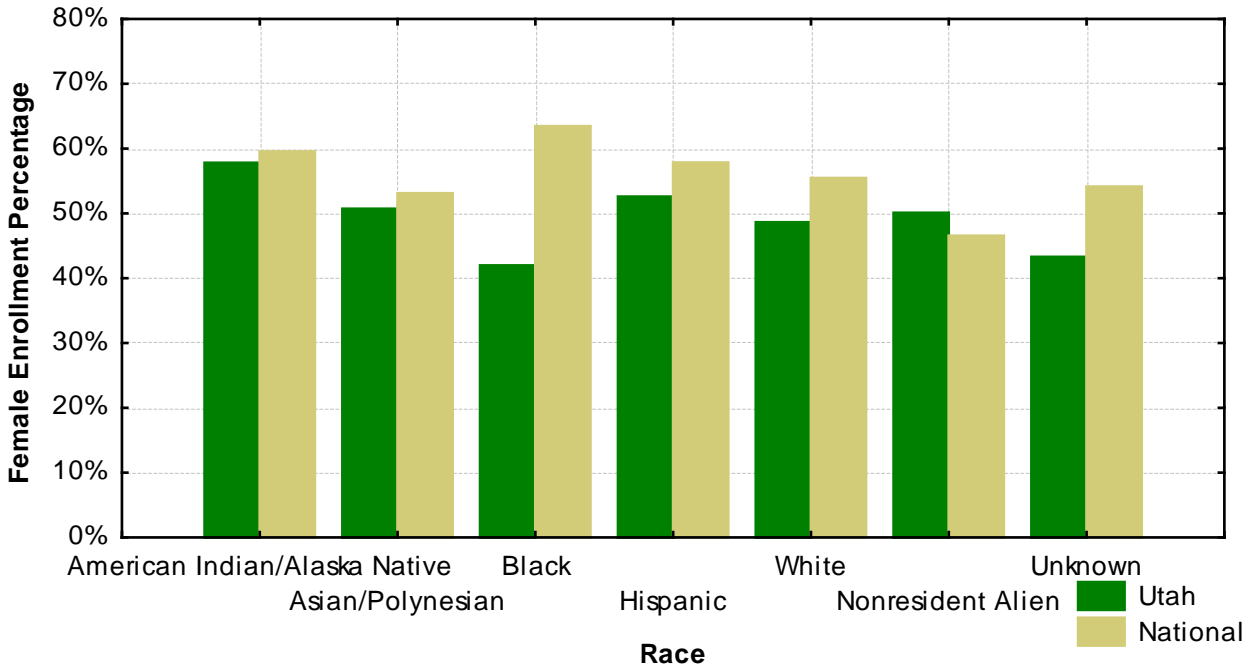


Figure 1.6: Female Enrollment by Degree Type
2008 Data, Public Institutions

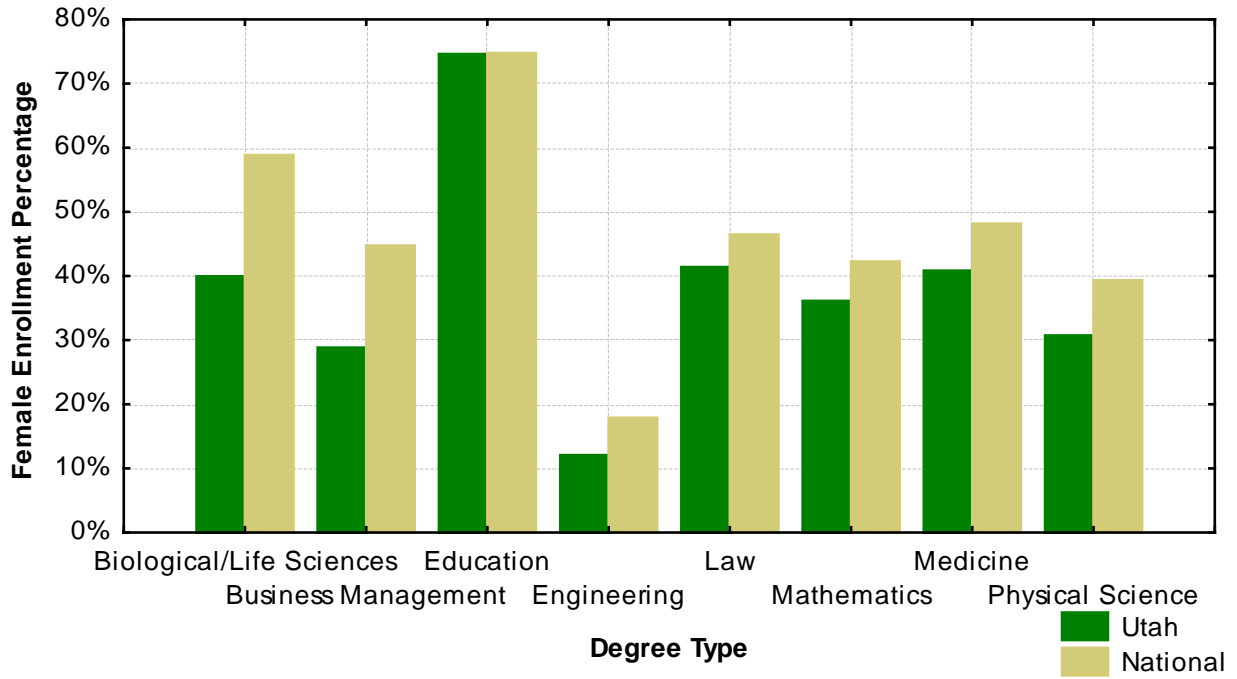
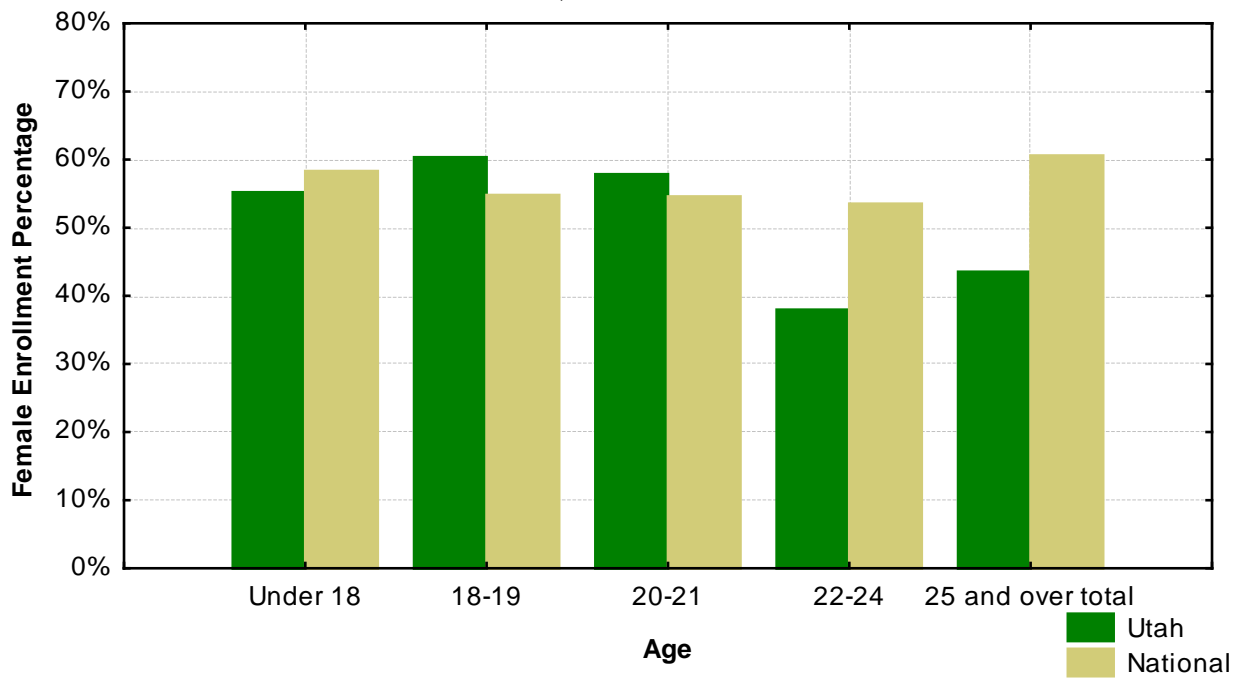


Figure 1.7: Female Enrollment by Age
2008 Data, Public Institutions



Section 2: USHE, Private Not-For-Profit, and Combined

| Table 2.1: Female Enrollment Percentage by School Control | | | | |
|---|-------|-------------------------|----------|---------------|
| Category | USHE | Private Not-For-Profit* | Combined | Difference** |
| Grand Total | 49.1% | 51.6% | 49.6% | -2.5% |
| Undergraduate Total | 48.7% | 54.5% | 52.5% | -5.8% |
| Undergraduate First Time | 51.4% | 51.0% | 49.0% | 0.4% |
| Graduate and First Professional | 49.0% | 52.3% | 50.2% | -3.3% |
| Enrollment Status | | | | |
| Full Time | 47.7% | 52.2% | 49.3% | -4.5% |
| Part Time | 50.6% | 46.7% | 50.0% | 3.9% |
| Race | | | | |
| American Indian or Alaska Native | 58.4% | 53.5% | 57.1% | 4.9% |
| Asian, Native Hawaiian, Pacific Islander | 51.1% | 49.4% | 50.4% | 1.7% |
| Black of African American | 41.9% | 63.7% | 50.8% | -21.8% |
| Hispanic | 53.0% | 53.7% | 52.8% | -0.7% |
| White | 48.8% | 50.9% | 49.2% | -2.1% |
| Nonresident Alien | 50.1% | 56.7% | 51.3% | -6.6% |
| Unknown Race | 43.3% | 48.9% | 44.5% | -5.6% |
| Degree Type | | | | |
| Biological/Life Sciences | 40.0% | 36.0% | 77.7% | 4.0% |
| Business Management and Admin | 28.8% | 33.0% | 12.0% | -4.2% |
| Education | 74.6% | 80.9% | 38.0% | -6.3% |
| Engineering | 12.1% | 11.7% | 38.1% | 0.4% |
| Law | 41.4% | 35.0% | 37.1% | 6.4% |
| Mathematics | 36.1% | 39.0% | 30.1% | -2.9% |
| Medicine | 40.9% | N/A | 40.9% | N/A |
| Physical Science | 30.8% | 28.4% | 30.5% | 2.4% |
| Age | | | | |
| 17 and under | 44.6% | 48.6% | 55.3% | -4.0% |
| 18–19 | 39.4% | 54.9% | 62.8% | -15.5% |
| 20–21 | 42.0% | 69.6% | 61.5% | -27.6% |
| 22–24 | 62.1% | 28.5% | 35.3% | 33.6% |
| 25 and over | 56.4% | 31.2% | 42.0% | 25.2% |

*Private Not-For-Profit includes four institutions: BYU, LDS Business College, Westminster, and Western Governors University.

**This column reports the difference between USHE and Private Not-For-Profit.

Note: Shaded boxes (content bolded) are those categories that showed a 5% negative difference or more between USHE and Private Not-For-Profit. Black boxes (content italicized) are those categories that showed a 5% positive difference or more between USHE and Private Not-For-Profit.

Section 3: Institutional Breakdown: USHE and Private Not-For-Profit

| Table 3.1: Individual Utah School Breakdown of Enrollment Variables | | | | | | |
|---|--------------|--------------|--------------|--------------|--------------|--------------|
| Category | BYU | CEU | DSC | LDSBC | SC | SLCC |
| Grand Total | 48.2% | 58.0% | 51.5% | 50.5% | 51.9% | 49.7% |
| Undergraduate Total | 49.2% | 58.0% | 51.5% | 50.5% | 51.9% | 49.7% |
| Undergraduate First Time | 54.8% | 53.3% | 49.9% | 57.5% | 55.0% | 48.1% |
| Graduate and First Professional | 38.1% | N/A | N/A | N/A | N/A | N/A |
| Enrollment Status | | | | | | |
| Full Time | 48.4% | 56.4% | 49.3% | 48.0% | 53.6% | 48.0% |
| Part Time | 46.4% | 63.2% | 54.5% | 57.6% | 49.4% | 50.4% |
| Race | | | | | | |
| American Indian or Alaska Native | 42.2% | 80.3% | 65.4% | N/A | 57.6% | 53.8% |
| Asian, Native Hawaiian, Pacific Islander | 48.0% | 56.4% | 41.1% | N/A | 29.2% | 54.8% |
| Black of African American | 52.3% | N/A | 40.4% | N/A | N/A | 40.1% |
| Hispanic | 49.4% | 50.8% | 52.0% | 57.8% | 44.7% | 52.5% |
| White | 47.9% | 55.2% | 51.7% | 51.6% | 53.1% | 49.4% |
| Nonresident Alien | 49.9% | N/A | N/A | 42.6% | 44.7% | 47.1% |
| Unknown Race | 53.3% | 47.9% | N/A | N/A | N/A | 47.6% |
| Degree Type | | | | | | |
| Biological/Life Sciences | 35.4% | N/A | 42.3% | N/A | N/A | N/A |
| Business Management and Admin | 21.7% | N/A | 32.9% | N/A | N/A | N/A |
| Education | 85.4% | N/A | 81.1% | N/A | N/A | N/A |
| Engineering | 11.7% | N/A | 6.1% | N/A | N/A | N/A |
| Law | 35.0% | N/A | N/A | N/A | N/A | N/A |
| Mathematics | 37.3% | N/A | N/A | N/A | N/A | N/A |
| Medicine | N/A | N/A | N/A | N/A | N/A | N/A |
| Physical Science | N/A | N/A | N/A | N/A | N/A | N/A |
| Age | | | | | | |
| 17 and under | 54.3% | N/A | 53.1% | N/A | 51.6% | 58.7% |
| 18–19 | 70.3% | N/A | 58.6% | 77.3% | 62.8% | 55.1% |
| 20–21 | 72.2% | N/A | 57.4% | 79.8% | 46.8% | 52.5% |
| 22–24 | 27.9% | N/A | 34.6% | 26.0% | 21.3% | 38.9% |
| 25 and over | 27.7% | N/A | 50.5% | 46.5% | 46.3% | 47.8% |

*N/A means that there are not enough respondents to provide valuable percentages.

Black boxes: Strength of institution (relative to self).

Gray boxes: Weakness of institution (relative to self).

| Table 3.1 (cont.): Individual Utah School Breakdown of Enrollment Variables | | | | | | | |
|--|--------------|--------------|--------------|--------------|--------------|--------------|--------------|
| Category | SUU | U | USU | UVU | WC | WGU | WSU |
| Grand Total | 57.8% | 44.5% | 48.2% | 43.3% | 52.3% | 61.7% | 51.6% |
| Undergraduate Total | 58.0% | 44.7% | 49.2% | 43.2% | 55.6% | 59.0% | 51.8% |
| Undergraduate First Time | 61.3% | 48.9% | 56.0% | 48.3% | 54.8% | 52.3% | 51.4% |
| Graduate and First Professional | 56.0% | 43.9% | 40.9% | N/A | 42.7% | 68.3% | 44.0% |
| Enrollment Status | | | | | | | |
| Full Time | 55.9% | 44.4% | 49.1% | 43.3% | 54.7% | 61.7% | 48.6% |
| Part Time | 62.2% | 44.9% | 44.5% | 43.3% | 42.5% | N/A | 54.1% |
| Race | | | | | | | |
| American Indian or Alaska Native | 59.3% | 58.5% | 44.3% | 47.6% | N/A | 57.0% | 49.6% |
| Asian, Native Hawaiian, Pacific Islander | 48.1% | 51.8% | 47.0% | 49.5% | 55.4% | 54.8% | 49.0% |
| Black of African American | 47.8% | 44.5% | 35.1% | 37.9% | 35.3% | 66.6% | 48.1% |
| Hispanic | 59.2% | 55.4% | 55.2% | 48.1% | 59.9% | 62.0% | 55.1% |
| White | 58.3% | 43.4% | 49.2% | 42.9% | 51.6% | 62.1% | 51.9% |
| Nonresident Alien | 43.6% | 40.9% | 36.0% | 48.6% | 61.4% | N/A | 42.1% |
| Unknown Race | 58.5% | 46.0% | 45.6% | 35.0% | 52.5% | 58.6% | 50.9% |
| Degree Type | | | | | | | |
| Biological/Life Sciences | 41.2% | 42.2% | 40.1% | 33.0% | 55.7% | N/A | 38.8% |
| Business Management/Admin. | 35.9% | 28.7% | 31.8% | 23.3% | 30.0% | 51.6% | 31.7% |
| Education | 68.5% | 72.7% | 75.0% | 78.3% | 81.3% | 78.8% | 75.4% |
| Engineering | 12.7% | 13.6% | 12.5% | 5.1% | N/A | N/A | 6.9% |
| Law | N/A | 41.4% | N/A | N/A | N/A | N/A | N/A |
| Mathematics | N/A | 34.5% | 35.6% | 44.4% | 52.8% | N/A | 27.0% |
| Medicine | N/A | 40.9% | N/A | N/A | N/A | N/A | N/A |
| Physical Science | 36.6% | 31.6% | 32.9% | 25.3% | 48.6% | N/A | 26.9% |
| Age | | | | | | | |
| 17 and under | 60.3% | 48.5% | 66.2% | 51.0% | N/A | N/A | 55.1% |
| 18–19 | 69.0% | 54.1% | 68.3% | 62.2% | 59.0% | N/A | 59.3% |
| 20–21 | 67.3% | 57.0% | 64.2% | 56.0% | 57.4% | N/A | 60.1% |
| 22–24 | 38.9% | 42.4% | 31.6% | 31.2% | 51.6% | N/A | 41.9% |
| 25 and over | 53.1% | 39.0% | 31.1% | 32.5% | 45.3% | N/A | 48.4% |

*N/A means that there are not enough respondents to provide valuable percentages.

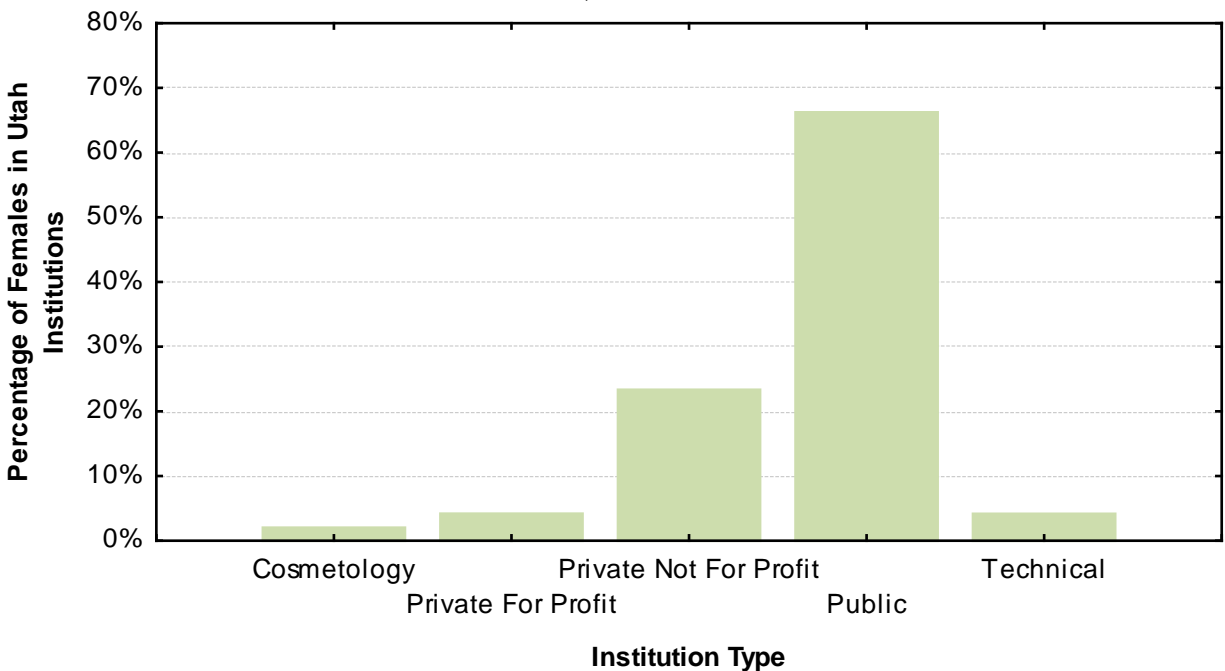
Black boxes: Strength of institution (relative to self).

Gray boxes: Weakness of institution (relative to self).

Section 4: Utah Categories

| Table 4.1: Utah Students by Type of Institution Attending | | | | | |
|---|--|---------------------------------|-------------------------------------|-------------------------------|-----------------------------------|
| Utah Institutional Category | Number of Institutions Submitting Data | Total Number of Female Students | Percentage of Total Female Students | Total Number of Male Students | Percentage of Total Male Students |
| USHE | 10 | 73488 | 66.2% | 76270 | 69.3% |
| Private Not-For-Profit | 4 | 25906 | 23.4% | 24280 | 22.1% |
| Private For-Profit | 19 | 4662 | 4.2% | 3683 | 3.3% |
| Technical | 10 | 4630 | 4.2% | 5560 | 5.1% |
| Cosmetology | 24 | 2249 | 2.0% | 241 | 0.2% |
| Total | 62 | 110935 | 100.00% | 110034 | 100% |

Figure 4.1: Institution Type of Females Who Are Attending in Utah
2008 Data, All Institutions



Note: See Appendix A for breakdown of institution classifications

Section 5: Enrollment for All Types of Utah Institutions

| Table 5.1: Individual School Enrollment Totals | | | |
|--|-------------------------|------------------------|--------------------------|
| Institution | Enrollment Total | Enrollment Male | Enrollment Female |
| AmeriTech College (Draper) | 100 | 11 | 89 |
| AmeriTech College (Provo) | 363 | 99 | 264 |
| Argosy University (Draper) | 64 | 28 | 36 |
| Bridgerland Applied Technology College (Logan) | 551 | 258 | 293 |
| Brigham Young University (Provo) | 34244 | 17750 | 16494 |
| Cameo College of Essential Beauty (Murray) | 243 | 0 | 243 |
| Careers Unlimited (Orem) | 121 | 3 | 118 |
| Certified Careers Institute (Clearfield) | 11 | 1 | 10 |
| Certified Careers Institute (Salt Lake City) | 86 | 6 | 80 |
| College of Eastern Utah (Price) | 1438 | 604 | 834 |
| Dallas Roberts Academy of Hair Design & Aesthetics (Provo) | 143 | 2 | 141 |
| Davis Applied Technology College (Kaysville) | 3647 | 1935 | 1712 |
| DeVry University (Sandy) | 93 | 50 | 43 |
| Dixie State College of Utah (St. George) | 86 | 50 | 36 |
| Eagle Gate College (Layton) | 406 | 135 | 271 |
| Eagle Gate College (Murray) | 119 | 37 | 82 |
| Eagle Gate College (Salt Lake City) | 178 | 66 | 112 |
| Echelon Edge Academy Of Hair Skin and Nails (Sandy) | 112 | 3 | 109 |
| Evans Hairstyling College (Cedar City) | 24 | 0 | 24 |
| Evans Hairstyling College (St. George) | 29 | 0 | 29 |
| Everest College (West Valley City) | 179 | 51 | 128 |
| Fran Brown College of Beauty (Layton) | 165 | 2 | 163 |
| Hairitage Hair Academy (St. George) | 34 | 0 | 34 |
| Healing Mountain Massage School (Salt Lake City) | 15 | 4 | 11 |
| ImageWorks Academy of Hair Design (Spanish Fork) | 64 | 0 | 64 |
| ITT Technical Institute (Murray) | 661 | 561 | 100 |
| LDS Business College (Salt Lake City) | 1377 | 682 | 695 |
| Maximum Style Tec School of Cosmetology (Logan) | 32 | 0 | 32 |
| Mountainland Applied Technology College (Orem) | 606 | 190 | 416 |
| Myotherapy College of Utah (Salt Lake City) | 66 | 8 | 58 |
| Neumont University (South Jordan) | 271 | 259 | 12 |
| Ogden Institute of Massage Therapy (Ogden) | 31 | 6 | 25 |
| Ogden–Weber Applied Technology College (Ogden) | 3326 | 1947 | 1379 |
| Paul Mitchell the School (Provo) | 245 | 16 | 229 |
| Paul Mitchell the School (Salt Lake City) | 311 | 46 | 265 |
| Premier Hair Academy (West Valley City) | 83 | 33 | 50 |
| Provo College (Provo) | 244 | 70 | 174 |
| Renaissance School of Therapeutic Massage (Bountiful) | 11 | 0 | 11 |

| Table 5.1 (Cont.): Individual School Enrollment Totals | | | |
|---|-----------------------------|----------------------------|------------------------------|
| Institution | Enrollment Total | Enrollment Male | Enrollment Female |
| Salt Lake Community College (Salt Lake City) | 29396 | 14799 | 14597 |
| Sherman Kendall Academy of Beauty Arts & Sciences (Midvale) | 31 | 0 | 31 |
| Sherman Kendall Academy (Salt Lake City) | 45 | 3 | 42 |
| Skinworks School of Advanced Skincare (Salt Lake City) | 49 | 1 | 48 |
| Snow College (Ephraim) | 3798 | 1925 | 1973 |
| Southern Utah University (Cedar City) | 7516 | 3174 | 4342 |
| Southwest Applied Technology Center (Cedar City) | 516 | 346 | 170 |
| Stacey's Hands of Champions (Ogden) | 109 | 4 | 105 |
| Stevens Henager College (Logan) | 225 | 122 | 103 |
| Stevens-Henager College (Murray) | 876 | 355 | 521 |
| Stevens-Henager College of Business (Provo) | 646 | 288 | 358 |
| Stevens-Henager College (Ogden) | 371 | 171 | 200 |
| The Art Institute of Salt Lake City (Draper) | 233 | 93 | 140 |
| Uintah Basin Applied Technology College (Roosevelt) | 700 | 266 | 434 |
| University of Phoenix-Utah Campus (Salt Lake City) | 3396 | 1744 | 1652 |
| University of Utah (Salt Lake City) | 28211 | 15643 | 12568 |
| Utah Career College (Orem) | 422 | 87 | 335 |
| Utah Career College (Layton) | 38 | 14 | 24 |
| Utah College of Massage Therapy (Salt Lake City) | 95 | 20 | 75 |
| Utah College of Massage Therapy (Lindon) | 194 | 41 | 153 |
| Utah State University (Logan) | 15099 | 7818 | 7281 |
| Utah State University-Continuing Education (Logan) | 10130 | 3959 | 6171 |
| Utah Valley University (Orem) | 26696 | 15148 | 11548 |
| Weber State University (Ogden) | 21388 | 10350 | 11038 |
| Western Governors University (Salt Lake City) | 11706 | 4485 | 7221 |
| Westminster College (Salt Lake City) | 2859 | 1363 | 1496 |
| Total | 220969 | 110034 | 110935 |

Section 6: Longitudinal Data¹

| Year | Percentage of National Males 18–24 Going to School | Percentage of National Females 18–24 Going to School | Percentage of Utah Males 18–24 Going to School | Percentage of Utah Females 18–24 Going to School | Percentage of National Students Who Are Female | Percentage of Utah Students Who Are Female |
|------|--|--|--|--|--|--|
| 1987 | 24.73% | 26.08% | 33.41% | 30.99% | 54.00% | 47.60% |
| 1991 | 26.06% | 29.69% | 36.06% | 37.41% | 55.10% | 49.70% |
| 1993 | 27.94% | 31.96% | 35.68% | 38.43% | 55.60% | 50.40% |
| 1995 | 28.03% | 33.05% | 33.21% | 37.04% | 56.00% | 50.60% |
| 1997 | 28.63% | 34.68% | 34.14% | 37.16% | 56.20% | 51.20% |
| 1999 | 28.45% | 35.14% | 33.52% | 36.41% | 56.30% | 50.30% |
| 2001 | 28.64% | 36.37% | 33.21% | 35.49% | 56.40% | 49.60% |
| 2003 | 30.08% | 38.87% | 31.61% | 35.34% | 57.30% | 49.80% |
| 2005 | 30.85% | 40.09% | 31.12% | 36.90% | 57.40% | 49.80% |
| 2007 | 32.15% | 41.39% | 32.11% | 38.32% | 57.10% | 50.00% |

Figure 6.1: Percentage of 18-24-Year-Old Females Enrolled in Postsecondary Institutions by Year
18-24 Students (IPEDS) / 18-24 Residents (Census)



¹ Enrollment data by age is only reported in odd-numbered years.

Figure 6.2: Percentage of 18-24-Year-Old Males Enrolled in Postsecondary Institutions by Year
 18-24 Students (IPEDS) / 18-24 Residents (Census)

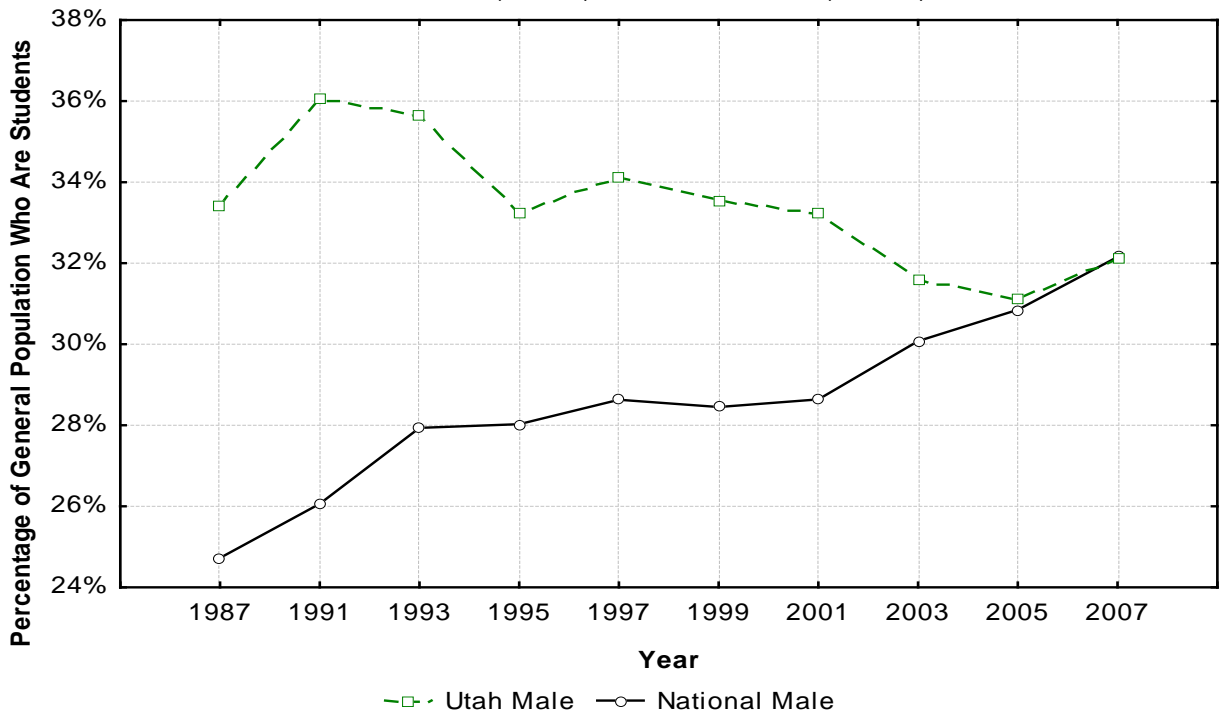


Figure 6.3: Percentage of Female Enrollment: Benchmark Comparison By Year. Utah Percent Enrollment Minus National Percent Enrollment (Difference) by Gender

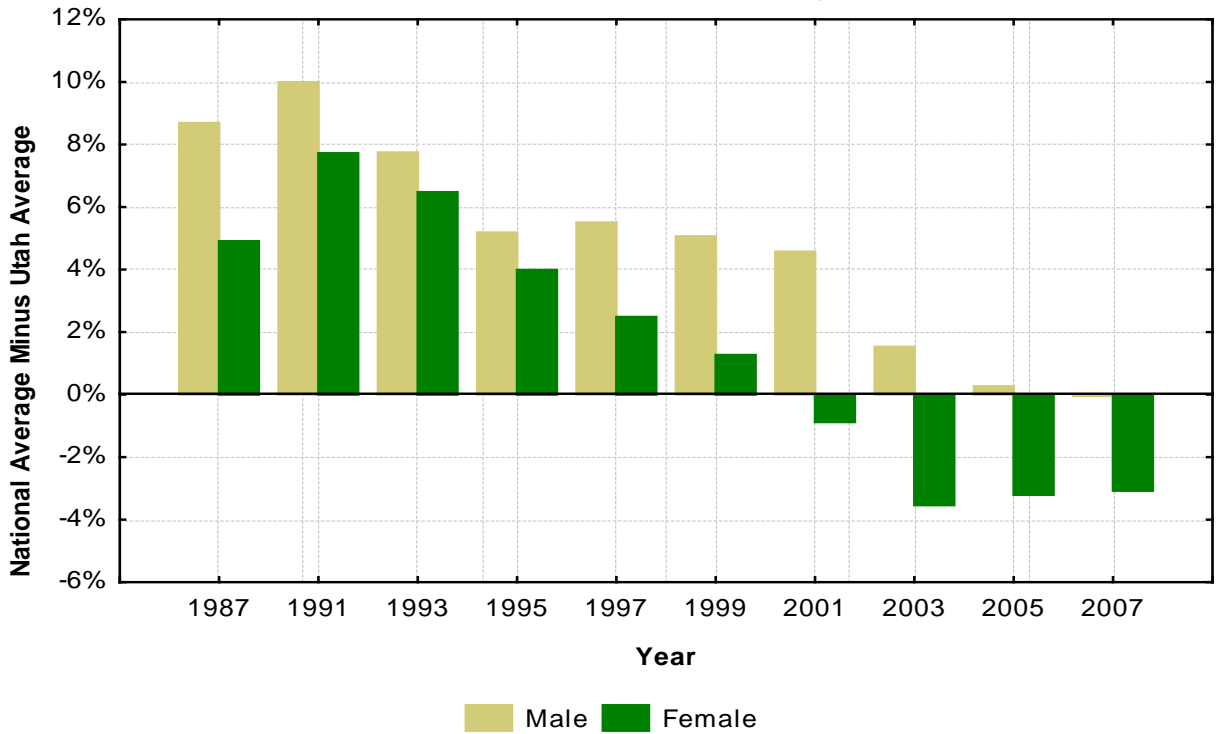


Figure 6.4: Percentage of 18-24-Year-Old Female Enrollment by Year
1987-2007 (Odd Years), All Institutions

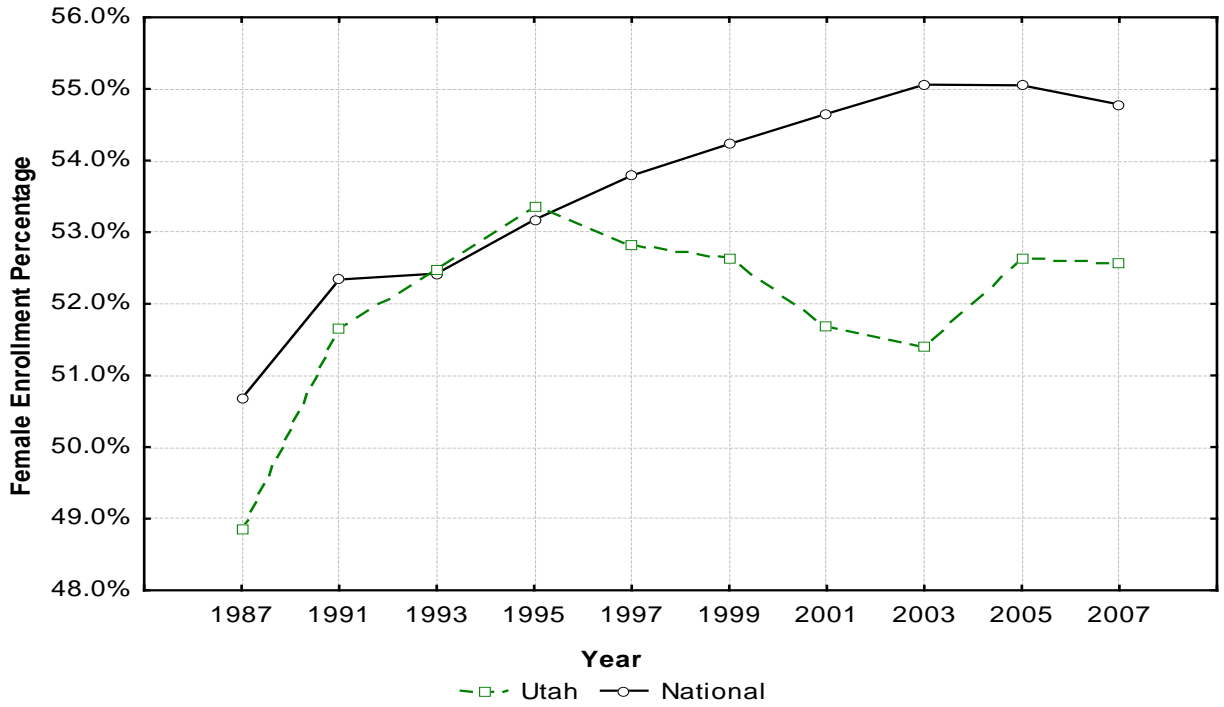
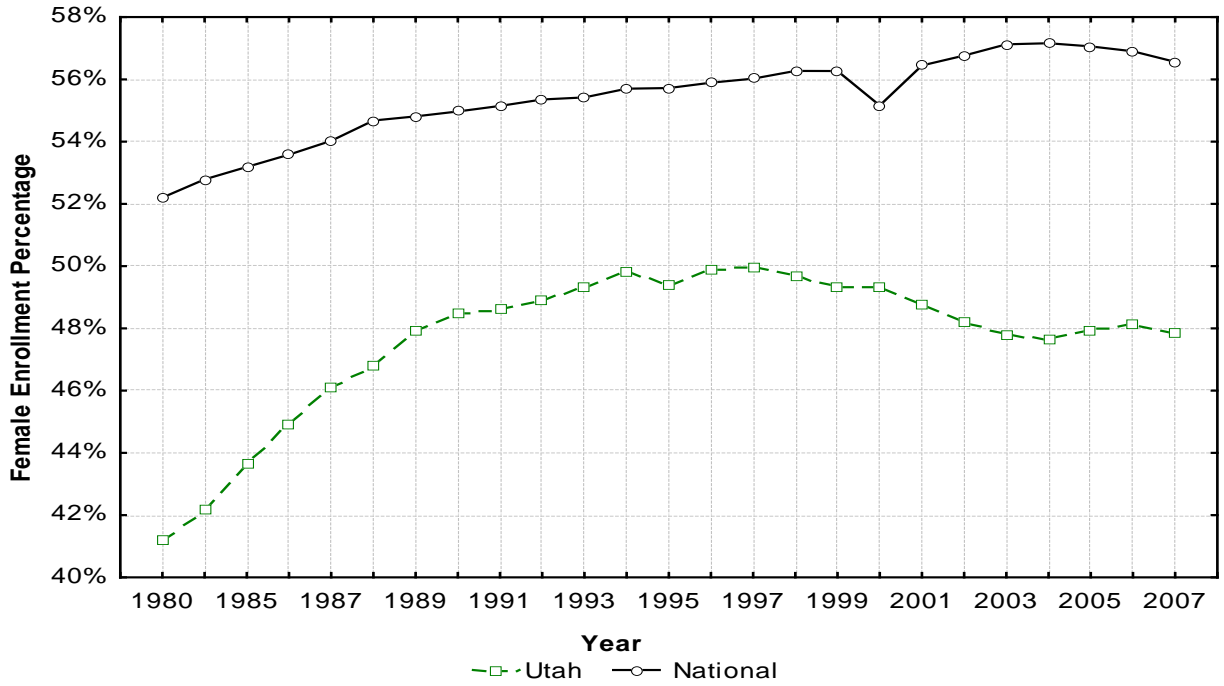


Figure 6.5: Percentage of Female Enrollment by Year
1987-2007 (Odd Years), Public Institutions

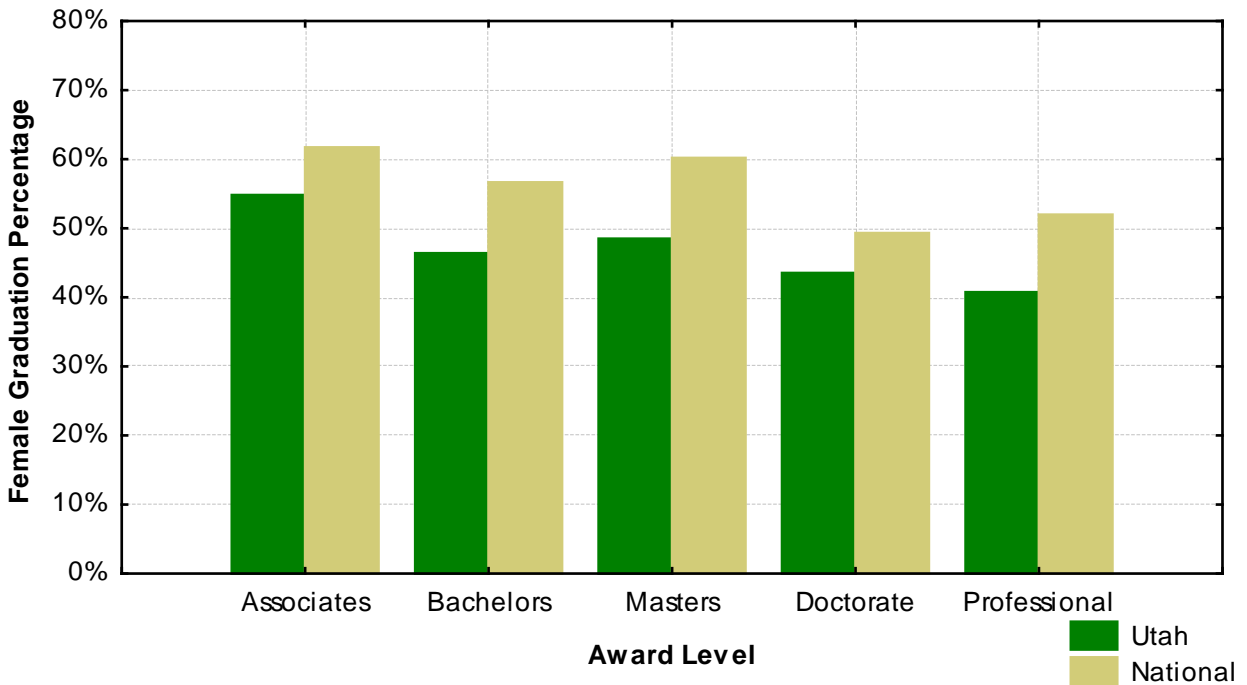


PART II: GRADUATION

Section 7: Completion Data

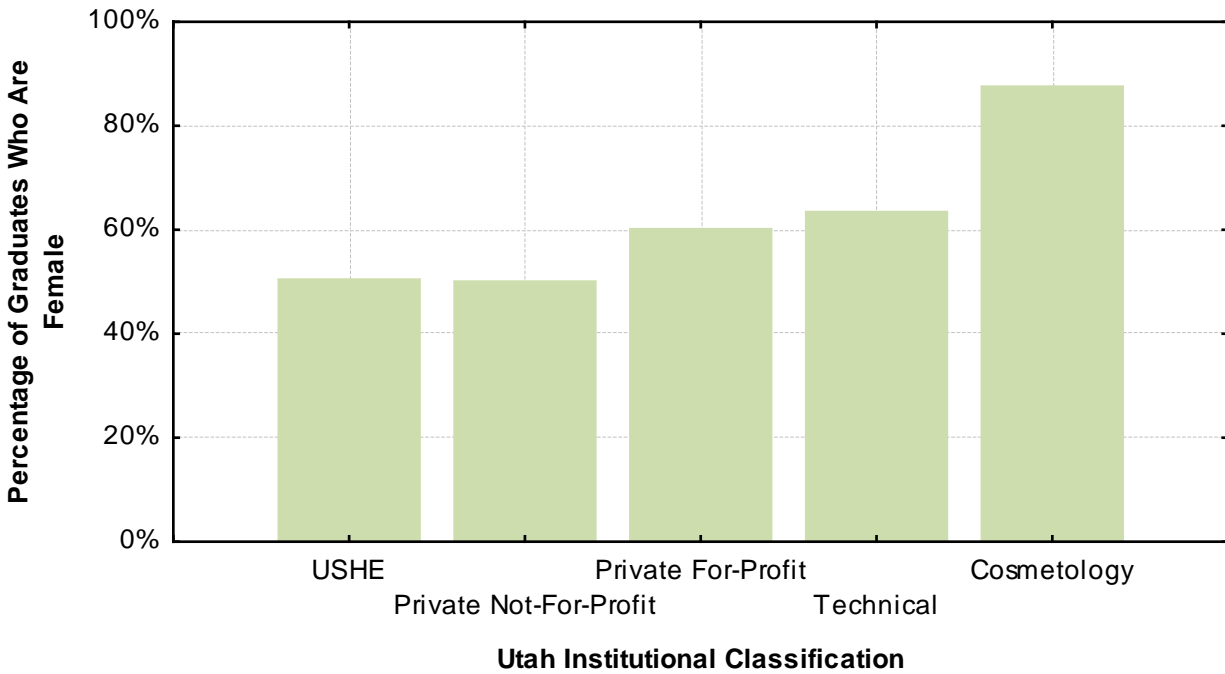
| | Associates | Bachelors | Masters | Doctorate | First Professional | Total |
|------------------------|------------|-----------|---------|-----------|--------------------|-------|
| USHE | 54.8% | 46.4% | 48.5% | 43.5% | 40.7% | 49.6% |
| Utah Public | 54.8% | 46.4% | 48.5% | 43.5% | 40.7% | 51.9% |
| National Public | 61.7% | 56.6% | 60.2% | 49.3% | 52.0% | 57.7% |
| Utah All Postsecondary | 56.2% | 47.7% | 45.7% | 43.5% | 40.7% | 53.5% |
| National Postsecondary | 61.5% | 57.3% | 60.3% | 50.7% | 49.8% | 59.3% |

Figure 7.1: Female Graduation Percentage by Award Level
2008 Data, Public Institutions



| Table 7.2: Female Graduation Percentage by Utah Institution Type | | | | | |
|---|------------------------------------|------------------------|-----------------------|-------------------------|---|
| Utah Category | Number of Institutions Used | Total Graduates | Male Graduates | Female Graduates | Percentage of Graduates Who Are Female |
| USHE | 9 | 26259 | 13031 | 13228 | 50.4% |
| Private Not-For-Profit | 4 | 10352 | 5176 | 5176 | 50.0% |
| Private For-Profit | 12 | 2913 | 1163 | 1750 | 60.1% |
| Technical | 3 | 3269 | 1198 | 2071 | 63.4% |
| Cosmetology | 14 | 1822 | 227 | 1595 | 87.5% |

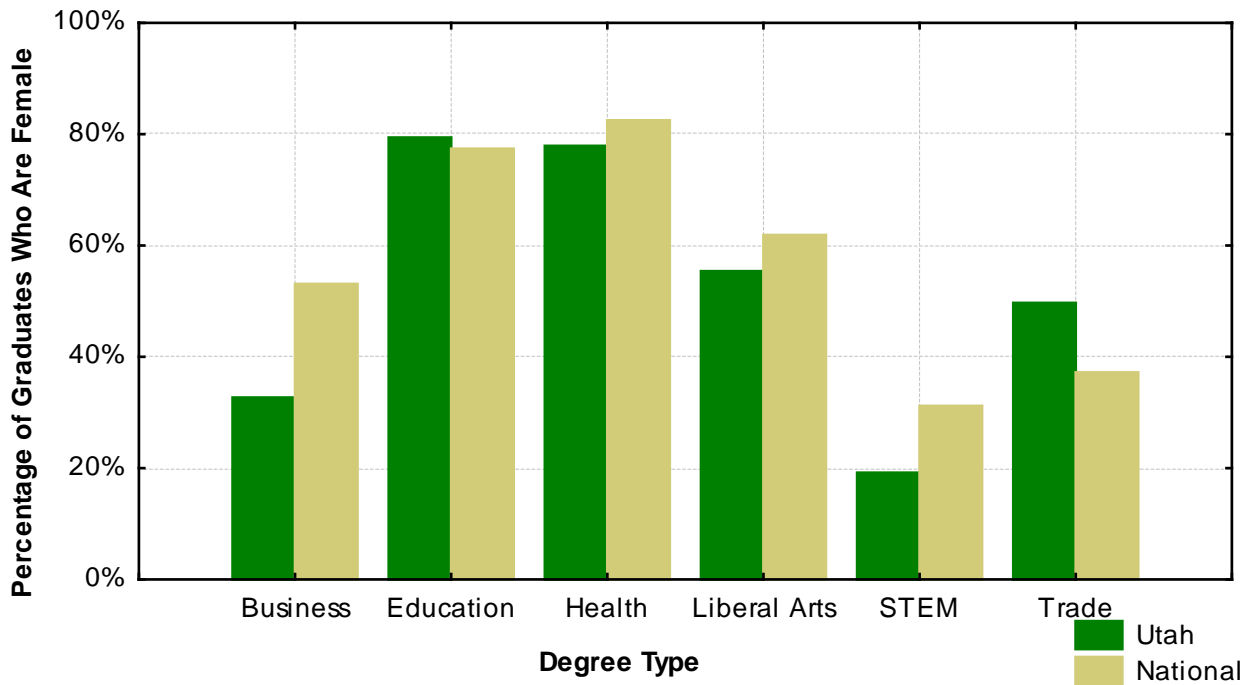
Figure 7.2: Percentage of Females Graduating from Postsecondary Institutions
2008 Data, All Institutions



| Table 7.3: Percentage of Graduates Who Are Female by Degree Type | | | |
|---|---|---|-------------------|
| | Percentage of Utah Female Enrollment | Percentage of National Female Enrollment | Difference |
| <i>Business</i> | 32.7% | 53.1% | -20.4% |
| Education | 79.4% | 77.4% | 2.0% |
| Health | 77.9% | 82.5% | -4.6% |
| <i>Liberal Arts</i> | 55.4% | 61.9% | -6.5% |
| <i>STEM</i> | 19.2% | 31.2% | -12.0% |
| Trade | 49.7% | 37.2% | 12.5% |
| <i>All Groups</i> | 53.3% | 59.3% | -6.0% |

Note: Shaded boxes (content bolded) are those categories that showed a 5% negative difference or more between Utah Public and National Public. Black boxes (content italicized) are those categories that showed a 5% positive difference or more between Utah Public and National Public

Figure 7.3: Percentage of Graduates Who Are Female by Degree Type
Graduated in 2007-2008 Academic Year, All Institutions



*See following table for list of degrees and their respective degree type.

Table 7.4: Percentage of Graduates Who Are Female by Degree in Utah

| Degree | Degree Category | Percentage of Graduates Who Are Female |
|--|------------------------|---|
| Agriculture, agriculture operations, and related sciences | Liberal Arts | 41.1% |
| Architecture and related services | Liberal Arts | 21.6% |
| Area: ethnic, cultural, and gender studies | Liberal Arts | 47.5% |
| Biological and biomedical sciences | STEM | 33.9% |
| Business management, marketing, and related support services | Business | 31.8% |
| Communication, journalism, and related programs | Liberal Arts | 52.5% |
| Communications technologies/technicians and support services | Liberal Arts | 13.8% |
| Computer and information sciences and support services | STEM | 10.9% |
| Construction trades | Trade | 4.9% |
| Education | Education | 79.4% |
| Engineering technologies/technicians | STEM | 11.3% |
| Engineering | STEM | 10.4% |
| English language and literature/letters | Liberal Arts | 62.7% |
| Family and consumer sciences/human sciences | Liberal Arts | 88.9% |
| Foreign languages, literatures, and linguistics | Liberal Arts | 40.6% |
| Health professions and related clinical sciences | Health | 77.9% |
| History | Liberal Arts | 46.5% |
| Legal professions and studies | Business | 48.5% |
| Liberal arts and sciences, general studies and humanities | Liberal Arts | 55.2% |
| Mathematics and statistics | STEM | 31.2% |
| Mechanic and repair technologies/technicians | Trade | 3.8% |
| Multi/interdisciplinary studies | Liberal Arts | 46.1% |
| Natural resources and conservation | Liberal Arts | 41.8% |
| Parks, recreation, leisure, and fitness studies | Liberal Arts | 62.3% |
| Personal and culinary services | Trade | 94.9% |
| Philosophy and religious studies | Liberal Arts | 18.3% |
| Physical sciences | STEM | 28.6% |
| Precision production | Trade | 11.7% |
| Psychology | Liberal Arts | 62.9% |
| Public administration and social service professions | Liberal Arts | 71.7% |
| Science technologies/technicians | Trade | 35.3% |
| Security and protective services | Trade | 38.7% |
| Social sciences | Liberal Arts | 39.9% |
| Theology and religious vocations | Liberal Arts | N/A |
| Transportation and materials moving | Trade | 10.6% |
| Visual and performing arts | Liberal Arts | 63.2% |

Section 8: Utah Public and Private Not-For-Profit

Graduation rates are difficult to portray accurately. In the state of Utah, a high number of students take leave from school to serve LDS missions. Graduation rates are typically viewed in four-, six-, and eight-year increments. Unfortunately, graduation rates by gender are not tracked by IPEDS eight years after students begin school. To compare graduation rates by gender, we must look at six year rates. With the average time to graduate hovering around five years, six-year graduation rates in Utah do not accurately portray Utah's success or failure compared to national averages due to a disproportionate amount of two-year leaves of absence in Utah. To resolve this and other dilemmas, all universities nationwide report graduation statistics using adjusted cohort numbers. Cohorts take the initial number of first-time full-time enrolled students and subtracts those students that leave school due to military, church service, or death.

| Table 8.1: Graduation Numbers for Utah Public and Private Not-For-Profit | | | | | | |
|---|---------------------|--------------------------|----------------------------|-------------------------------|------------------------------|--------------------------------|
| Institution | Total Cohort | Total Male Cohort | Total Female Cohort | Total Cohort Graduates | Male Cohort Graduates | Female Cohort Graduates |
| College of Eastern Utah | 533 | 252 | 281 | 176 | 62 | 114 |
| Dixie State College | 1131 | 441 | 690 | 347 | 76 | 271 |
| Salt Lake Community College | 1831 | 868 | 963 | 373 | 138 | 235 |
| Snow College | 1227 | 503 | 724 | 474 | 122 | 352 |
| Southern Utah University | 528 | 145 | 383 | 200 | 49 | 151 |
| University of Utah | 1962 | 853 | 1109 | 1003 | 420 | 583 |
| Utah State University | 1498 | 487 | 1101 | 794 | 255 | 539 |
| Utah Valley University | 1928 | 1045 | 883 | 418 | 191 | 227 |
| Weber State University | 1719 | 717 | 1002 | 683 | 277 | 406 |
| Brigham Young University | 2927 | 812 | 2115 | 2325 | 658 | 1667 |
| LDS Business College | 264 | 104 | 160 | 106 | 33 | 73 |
| Western Governors Univ. | 25 | 14 | 11 | 14 | 8 | 6 |
| Westminster College | 315 | 116 | 199 | 171 | 63 | 108 |
| Total | 15862 | 6337 | 9525 | 7073 | 2345 | 4728 |
| <i>Benchmark (National Public & Private-NFP)</i> | <i>2021318</i> | <i>929599</i> | <i>1091719</i> | <i>908118</i> | <i>390739</i> | <i>517379</i> |

| Table 8.2: Graduation Percentages for Utah Public and Private Not-For-Profit | | | |
|---|---|---|---|
| Institution | Percentage of Adjusted* Cohort Graduates | Percentage of Adjusted Male Cohort Graduates | Percentage of Adjusted Female Cohort Graduates |
| College of Eastern Utah | 33.0% | 24.6% | 40.6% |
| Dixie State College of Utah | 30.7% | 17.2% | 39.3% |
| Salt Lake Community College | 20.4% | 15.9% | 24.4% |
| Snow College | 38.6% | 24.3% | 48.6% |
| Southern Utah University | 37.9% | 33.8% | 39.4% |
| University of Utah | 51.1% | 49.2% | 52.6% |
| Utah State University | 53.0% | 52.4% | 53.3% |
| Utah Valley University | 21.7% | 18.3% | 25.7% |
| Weber State University | 39.7% | 38.6% | 40.5% |
| Brigham Young University | 79.4% | 81.0% | 78.8% |
| LDS Business College | 40.2% | 31.7% | 45.6% |
| Western Governors University | N/A | N/A | N/A |
| Westminster College | 55.4% | 58.3% | 53.9% |
| Average | 44.6% | 37.0% | 49.6% |
| <i>Benchmark (National Public & Priv-NFP)</i> | <i>44.9%</i> | <i>42.0%</i> | <i>47.4%</i> |
| Difference | -0.3% | -5.0% | 2.6% |

*Adjusted cohorts take into consideration military leave, church missions, and deaths.

Note: Shaded box (content bolded) is the category that showed at least a 5% negative difference between Utah Public/Private Not-For Profit and the National Benchmark.

PART III: APPENDICES

Appendix A: Gender Percentages in General and Student Populations

| Table A.1: Gender Percentages in General and Student Populations | | | | |
|---|----------------------------|------------------------|-------------------------|---------------------|
| Year | National Population | Utah Population | National Student | Utah Student |
| 1980 | 49.9% | 51.4% | 52.2% | 41.2% |
| 1981 | 49.8% | 51.4% | N/A | N/A |
| 1982 | 49.7% | 51.3% | N/A | N/A |
| 1983 | 49.7% | 51.1% | N/A | N/A |
| 1984 | 49.6% | 50.9% | 52.8% | 42.2% |
| 1985 | 49.5% | 50.8% | 53.2% | 43.7% |
| 1986 | 49.4% | 50.7% | 53.6% | 44.9% |
| 1987 | 49.3% | 50.7% | 54.0% | 46.1% |
| 1988 | 49.3% | 50.7% | 54.7% | 46.8% |
| 1989 | 49.1% | 50.7% | 54.8% | 47.9% |
| 1990 | 49.0% | 50.7% | 55.0% | 48.4% |
| 1991 | 49.1% | 50.7% | 55.1% | 48.6% |
| 1992 | 49.0% | 50.7% | 55.3% | 48.9% |
| 1993 | 49.1% | 50.6% | 55.4% | 49.3% |
| 1994 | 49.1% | 50.6% | 55.7% | 49.8% |
| 1995 | 49.1% | 50.6% | 55.7% | 49.4% |
| 1996 | 49.0% | 50.7% | 55.9% | 49.9% |
| 1997 | 49.0% | 50.7% | 56.0% | 50.0% |
| 1998 | 49.0% | 50.7% | 56.3% | 49.7% |
| 1999 | 49.0% | 50.6% | 56.3% | 49.3% |
| 2000 | 48.8% | 50.7% | 55.2% | 49.4% |
| 2001 | 48.7% | 50.0% | 56.4% | 48.7% |
| 2002 | 48.6% | 49.4% | 56.8% | 48.2% |
| 2003 | 48.7% | 48.6% | 57.1% | 47.8% |
| 2004 | 48.6% | 48.5% | 57.2% | 47.6% |
| 2005 | 48.5% | 48.4% | 57.1% | 47.9% |
| 2006 | 48.5% | 48.2% | 56.9% | 48.2% |
| 2007 | 48.5% | 48.2% | 56.6% | 47.9% |

Figure A.1: Longitudinal Look at Resident and Student Populations

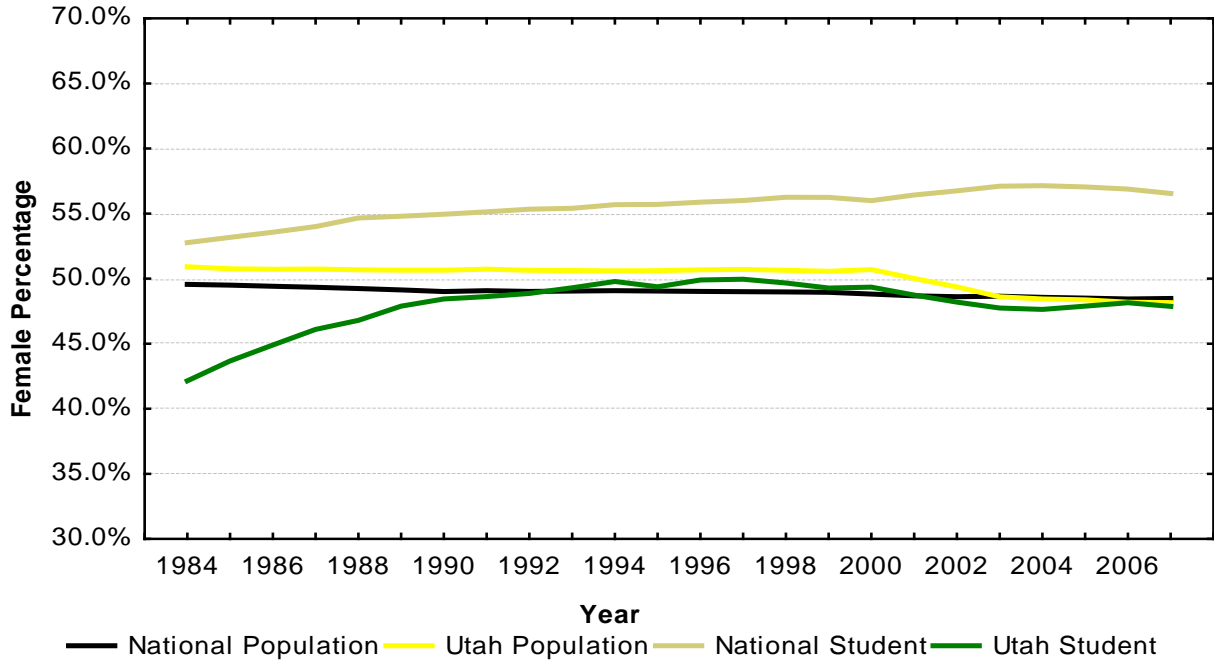
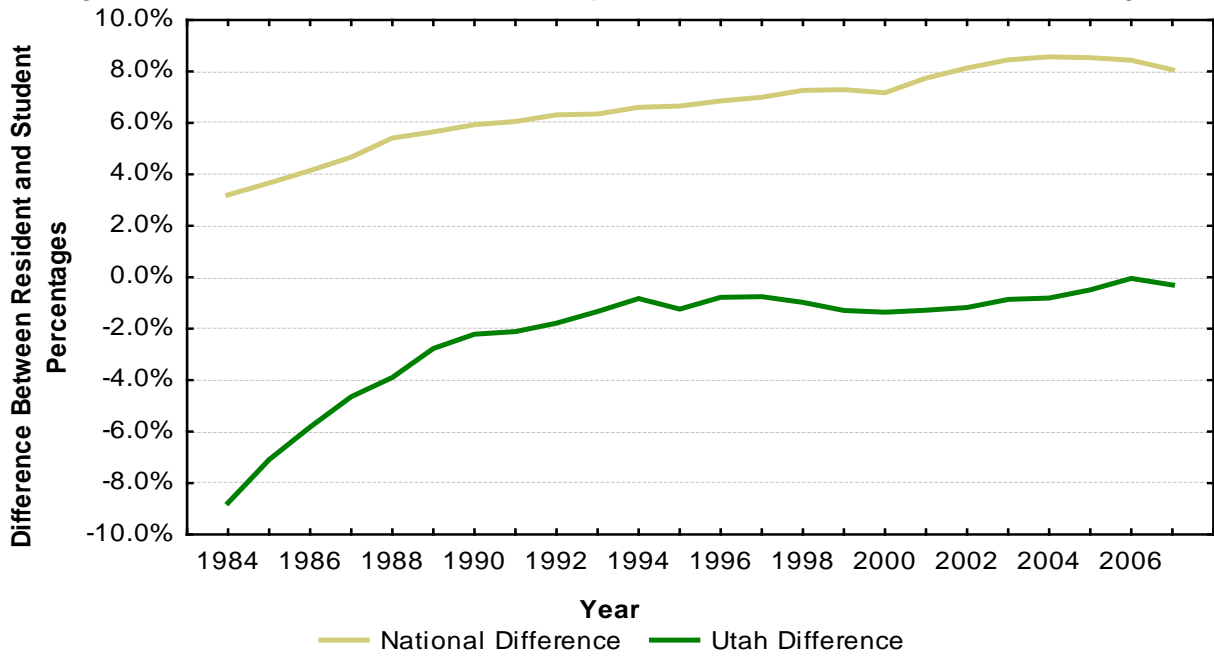


Figure A.2: Difference Between Female Population and Student Enrollment Percentages



Appendix B: Classification of Utah Institutions

Note: Where appropriate, some institutions are listed in two categories.

USHE Institutions (9)

College of Eastern Utah (Price)

Dixie State College (St. George)

Salt Lake Community College (Salt Lake City)

Snow College (Ephraim)

Southern Utah University (Cedar City)

University of Utah (Salt Lake City)

Utah State University (Logan)

Utah Valley University (Orem)

Weber State University (Ogden)

*USU-Cont. Ed. (included in USHE totals but not included in individual institution reports)

Public Institutions (17)

Bridgerland Applied Technology College (Logan)

College of Eastern Utah (Price)

Davis Applied Technology College (Kaysville)

Dixie Applied Technology College (St. George)

Dixie State College (St. George)

Mountainland Applied Technology College¹ (Orem)

Ogden-Weber Applied Technology Center (Ogden)

Salt Lake Community College (Salt Lake City)

Snow College (Ephraim)

Southern Utah University (Cedar City)

Southwest Applied Technology Center² (Cedar City)

Uintah Basin Applied Technology Center (Roosevelt)

University of Utah (Salt Lake City)

Utah State University (Logan)

Utah State University–Continuing Education³ (Logan)

Utah Valley University (Orem)

Weber State University (Ogden)

Private Not-For-Profit (4)

Brigham Young University (Provo)

LDS Business College (Salt Lake City)

Westminster College (Salt Lake City)

Western Governors University (Salt Lake City)

¹ Began reporting as a public institution in 2006

² Began reporting as a public institution in 2007

³ Began reporting as a public institution in 2003

Private For-Profit Institutions (20)

AmeriTech College (Draper)
AmeriTech College (Provo)
Argosy University (Salt Lake City)
Careers Unlimited (Orem)
DeVry University (Sandy)
Eagle Gate College (Layton)
Eagle Gate College (Murray)
Eagle Gate College (Salt Lake City)
Everest College (West Valley City)
Neumont University (South Jordan)
Provo College (Provo)
Stevens-Henager College (Logan)
Stevens-Henager College (Murray)
Stevens-Henager College (Provo)
Stevens-Henager College (Ogden)
The Art Institute of Salt Lake City (Draper)
University of Phoenix-Utah Campus (Salt Lake City)
Utah Career College (Layton)
Utah Career College (Orem)
Utah Career College (West Jordan)

Technical Institutions (Private For-Profit and Public, 10)

Ameritech College (Draper)
Ameritech College (Provo)
Bridgerland Applied Technology College (Logan)
Certified Careers Institute (Clearfield)
Certified Careers Institute (Salt Lake City)
ITT Technical Institute (Murray)
Mountainland Applied Technology College (Orem)
Ogden-Weber Applied Technology Center (Ogden)
Southwest Applied Technology Center (Cedar City)
Uintah Basin Applied Technology College (Roosevelt)

Cosmetology (23)

Bon Losee Academy of Hair Artistry (Provo)
Cameo College of Essential Beauty (Murray)
Dallas Roberts Academy of Hair Design & Aesthetics (Provo)
Echelon Edge Academy of Hair, Skin, and Nails (Sandy)
Evans Hairstyling College (Cedar City)
Evans Hairstyling College (St. George)
Fran Brown College of Beauty (Layton)
Hairitage Hair Academy (St. George)
Healing Mountain Massage School (Salt Lake City)
ImageWorks Academy of Hair Design (Spanish Fork)
Maximum Style Tec School of Cosmetology (Logan)

Myotherapy College of Utah (Salt Lake City)
Ogden Institute of Massage Therapy (Ogden)
Paul Mitchell the School (Provo)
Paul Mitchell the School (Salt Lake City)
Premier Hair Academy (West Valley City)
Renaissance School of Therapeutic Massage (Bountiful)
Sherman Kendall Academy of Beauty Arts & Sciences (Midvale)
Sherman Kendall Academy of Beauty Arts & Sciences (Salt Lake City)
Skinworks School of Advanced Skincare (Salt Lake City)
Staceys Hands of Champions (Ogden)
Utah College of Massage Therapy (Salt Lake City)
Utah College of Massage Therapy (Utah Valley)

Appendix C: Population Counts¹

| Table C.1: Census Population Counts for 18–24-Year-Olds (All Institutions) | | | | | | | | |
|--|---------------|-----------------|-----------|-------------|-----------------------|-------------------------|-------------------------|---------------------------|
| Year | National Male | National Female | Utah Male | Utah Female | National Student Male | National Student Female | Utah Student Male 18-24 | Utah Student Female 18-24 |
| 2007 | 15193533 | 14298882 | 170121 | 158105 | 5822233 | 8053621 | 54633 | 60590 |
| 2006 | 15110196 | 14202754 | 169583 | 157813 | | | | |
| 2005 | 15036029 | 14169528 | 172036 | 161227 | 5614745 | 7805984 | 53535 | 59486 |
| 2004 | 14979408 | 14151177 | 174755 | 164265 | | | | |
| 2003 | 14785308 | 14015723 | 175702 | 166224 | 5501535 | 7487950 | 55532 | 58747 |
| 2002 | 14601234 | 13818627 | 171732 | 167493 | | | | |
| 2001 | 14347863 | 13618085 | 165262 | 165435 | 5091393 | 6654359 | 54888 | 58714 |
| 2000 | 13977035 | 13335458 | 157737 | 162265 | | | | |
| 1999 | 13275767 | 12735682 | 148754 | 152230 | 4719386 | 6042783 | 49859 | 55431 |
| 1998 | 12994626 | 12481575 | 143283 | 147080 | | | | |
| 1997 | 12737143 | 12242893 | 136750 | 140729 | 4781860 | 6052410 | 46683 | 52296 |
| 1996 | 12662112 | 12180498 | 131027 | 134686 | | | | |
| 1995 | 12792620 | 12319693 | 125003 | 128171 | 4817683 | 6000470 | 41518 | 47469 |
| 1994 | 12930746 | 12466030 | 117565 | 120485 | | | | |
| 1993 | 13111245 | 12628680 | 111078 | 113923 | 4871191 | 5973648 | 39635 | 43786 |
| 1992 | 13239574 | 12736468 | 106099 | 108914 | | | | |
| 1991 | 13417656 | 12934607 | 102344 | 105429 | 4542450 | 5639053 | 36904 | 39440 |
| 1990 | 13679388 | 13155456 | 99751 | 102421 | | | | |
| 1989 | 13846373 | 13382414 | 96429 | 99034 | | | | |
| 1988 | 13913016 | 13504687 | 93782 | 96419 | | | | |
| 1987 | 14071096 | 13706597 | 93135 | 95969 | 4442343 | 5074746 | 31120 | 29739 |
| 1986 | 14343528 | 14016408 | 95278 | 98102 | | | | |
| 1985 | 14648864 | 14366417 | 97335 | 100359 | | | | |
| 1984 | 14914016 | 14662330 | 98086 | 101786 | | | | |
| 1983 | 15099076 | 14894431 | 99665 | 104102 | | | | |
| 1982 | 15177463 | 15014208 | 102098 | 107479 | | | | |
| 1981 | 15164633 | 15029852 | 103756 | 109519 | | | | |
| 1980 | 15053675 | 14968532 | 104996 | 110985 | | | | |

¹ Enrollment data by age is reported only in odd-numbered years.